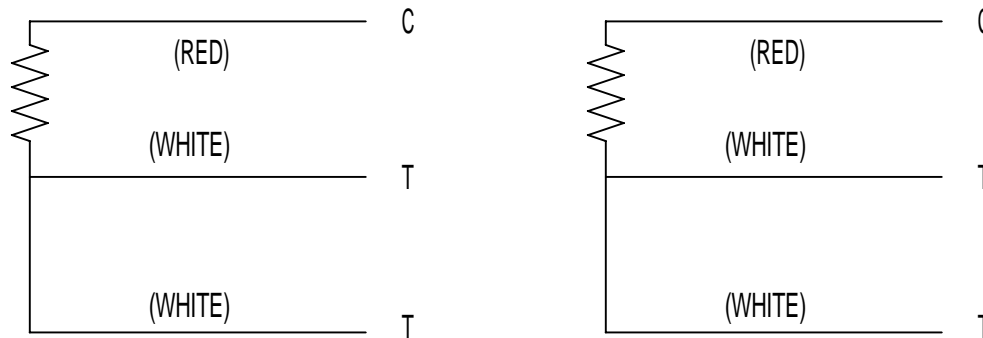


RTD'S

1. THERE ARE QTY-6 DUAL ELEMENT, RESISTANCE TEMP. DETECTORS (RTD) INSTALLED IN THE STATOR WINDING, (2 PER PHASE). REFER TO NAMEPLATE ATTACHED TO THE MOTOR ADJACENT TO ACCESSORY OUTLET BOX FOR RATING OF THE RTD'S.
2. DETECTORS ARE INSTALLED IN PHASES AS SHOWN.

| PHASE | A | B | C |
|---------|--------------|--------------|--------------|
| RTD NO. | 1, 11, 4, 44 | 2, 22, 5, 55 | 3, 33, 6, 66 |

WINDING RTD'S



| ACCESSORY LISTING |
|--------------------|
| QTY-6 6 LEAD RTD'S |

| | | | | | |
|---|---|----------|-----------------------------|---------------------|-------------------------|
| REVISION DESCRIPTION FOR: MISC | SCALE NONE | UNITS IN | TITLE | | NIDEC MOTOR CORPORATION |
| STL0211 -UPDATED FORMAT. | TOLERANCES ON DIMENSIONS (UNLESS OTHERWISE SPECIFIED) | | CUSTOMER CONNECTION DIAGRAM | | |
| MATERIAL: --- | INCHES | mm | ISSUED BY R. KING | APPROVED BY C. CADE | REVISION DATE 23-FEB-11 |
| MUST BE COMPLIANT TO RoHS DIRECTIVE EU 2002/95/IEC AND REGULATION EC 1907/2006 (REACH) AS AMENDED | ANGLES X°= ±1° | | CODE | DWG NO. 0338210 | REV B |
| | | | | | SHEET NUMBER 1 OF 1 |
| | | | | | DWG SIZE A |