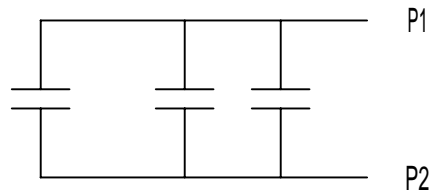
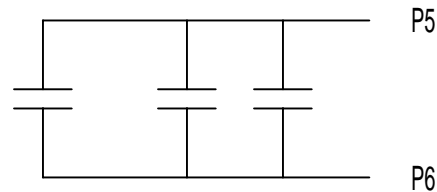


THERMOSTATS

1. MOTOR IS EQUIPPED WITH QTY-6 (2 PER PHASE) NORMALLY OPEN THERMOSTATS IN THE MOTOR WINDING. THERMOSTATS ARE SET TO CLOSE AT HIGH TEMPERATURE.
2. THERMOSTATS MUST NOT BE USED TO SWITCH ABOVE 18 AMPS AT 24 VDC OR 12 AMPS AT 230 VAC.



NORMALLY OPEN  
THERMOSTATS



ACCESSORY LISTING
QTY-6 N.O. THERMOSTATS

REVISION DESCRIPTION FOR: <b>MISC</b>	SCALE <b>NONE</b>	UNITS <b>IN</b>	TITLE		<b>NIDEC MOTOR CORPORATION</b>
STL0211 - UPDATED FORMAT.	TOLERANCES ON DIMENSIONS (UNLESS OTHERWISE SPECIFIED)		<b>CUSTOMER CONNECTION DIAGRAM</b>		
MATERIAL: ---	<u>INCHES</u>	<u>mm</u>	ISSUED BY <b>R. KING</b>	APPROVED BY <b>C. CADE</b>	REVISION DATE <b>23-FEB-11</b>
MUST BE COMPLIANT TO RoHS DIRECTIVE EU 2002/95/IEC AND REGULATION EC 1907/2006 (REACH) AS AMENDED	ANGLES $X^\circ = \pm 1^\circ$		CODE	DWG NO. <b>0429474</b>	REV <b>B</b>
					SHEET NUMBER <b>1 OF 1</b>
					DWG SIZE <b>A</b>