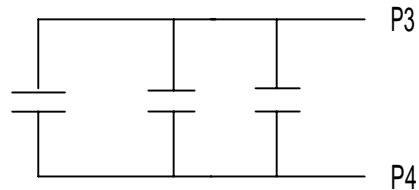


THERMOSTATS

1. MOTOR IS EQUIPPED WITH QTY-3 (1 PER PHASE) NORMALLY OPEN THERMOSTATS IN THE MOTOR WINDING. THERMOSTATS ARE SET TO CLOSE AT HIGH TEMPERATURE.
2. THERMOSTATS MUST NOT BE USED TO SWITCH ABOVE 18 AMPS AT 24 VDC OR 12 AMPS AT 230 VAC.

NORMALLY OPEN
THERMOSTATS



ACCESSORY LISTING
QTY-3 N.O. THERMOSTATS

REVISION DESCRIPTION FOR: MISC		SCALE NONE	UNITS IN	CUSTOMER CONNECTION DIAGRAM		NIDEC MOTOR CORPORATION		
STL0211 - UPDATED FORMAT.		TOLERANCES ON DIMENSIONS (UNLESS OTHERWISE SPECIFIED)						
MATERIAL: ---		<u>INCHES</u>	<u>mm</u>	ISSUED BY R. KING	APPROVED BY C. CADE	REVISION DATE 23-FEB-11		
MUST BE COMPLIANT TO RoHS DIRECTIVE EU 2002/95/IEC AND REGULATION EC 1907/2006 (REACH) AS AMENDED		ANGLES X°= ±1°		CODE	DWG NO. 0834065	REV C	SHEET NUMBER 1 OF 1	DWG SIZE A