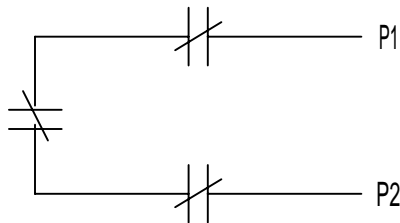
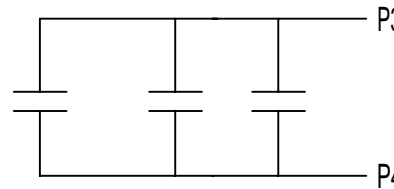


THERMOSTATS

1. MOTOR IS EQUIPPED WITH QTY-3 (1 PER PHASE) NORALLY OPEN THERMOSTATS SET TO CLOSE AT HIGH TEMPERATURE FOR ACTUATING AN ALARM SYSTEM.
2. MOTOR IS EQUIPPED WITH QTY-3 (1 PER PHASE) NORMALLY CLOSED THERMOSTATS SET TO OPEN AT HIGH TEMPERATURE FOR ACTUATING SHUTDOWN PROCEDURES.
3. THERMOSTATS MUST NOT BE USED TO SWITCH ABOVE 18 AMPS AT 24 VDC OR 12 AMPS AT 230 VAC.



NORMALLY CLOSED THERMOSTATS



NORMALLY OPEN THERMOSTATS

ACCESSORY LISTING
QTY-3 N.C. THERMOSTATS SHUTDOWN QTY-3 N.O. THERMOSTATS ALARM

REVISION DESCRIPTION FOR: MISC STL0211 - UPDATED FORMAT.	SCALE NONE	UNITS IN	CUSTOMER CONNECTION DIAGRAM		NIDEC MOTOR CORPORATION		
TOLERANCES ON DIMENSIONS (UNLESS OTHERWISE SPECIFIED)							
MATERIAL: ---	<u>INCHES</u>	<u>mm</u>	ISSUED BY R. KING	APPROVED BY C. CADE	REVISION DATE 23-FEB-11		
MUST BE COMPLIANT TO RoHS DIRECTIVE EU 2002/95/IEC AND REGULATION EC 1907/2006 (REACH) AS AMENDED			CODE	DWG NO. 0834067	REV C	SHEET NUMBER 1 OF 1	DWG SIZE A
ANGLES $X^\circ = \pm 1^\circ$							