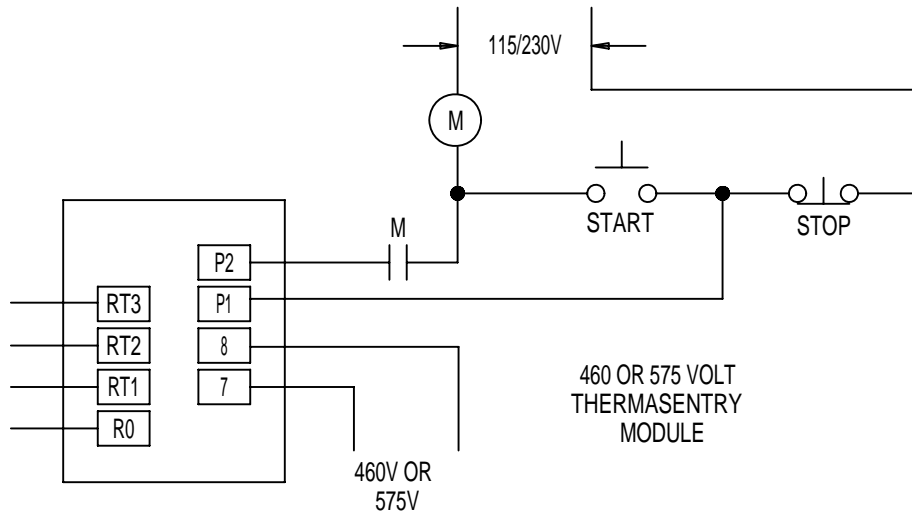


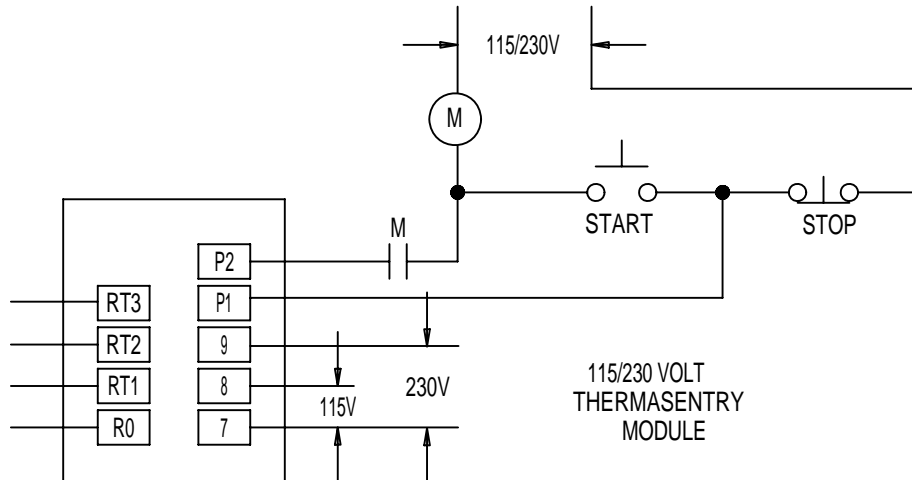
THERMASENTRY THERMISTORS



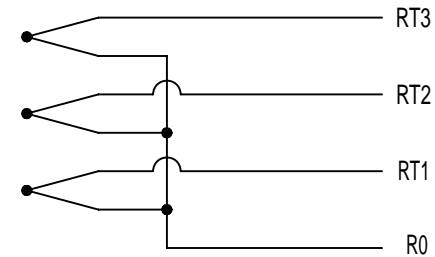
THERMASENTRY THERMISTORS

1. THERE ARE QTY. 3 POSITIVE TEMPERATURE COEFFICIENT (PTC) THERMISTORS (1 PER PHASE) INSTALLED IN THE MOTOR WINDING. THESE THERMISTORS ARE TO BE WIRED TO A MOTOR MOUNTED OR REMOTE MOUNTED THERMASENTRY CONTROL MODULE.
2. REFER TO CONNECTION DIAGRAM ATTACHED TO THE CONTROL MODULE FOR CORRECT WIRING OF THE THERMISTORS AND CONTROL MODULE. (ALSO SHOWN BELOW)

THERMASENTRY THERMISTORS



THERMASENTRY THERMISTORS



TYPICAL CONNECTION DIAGRAM, MOTOR MOUNTED OR REMOTE MOUNTED THERMASENTRY

ACCESSORY LISTING

QTY 1 - 115/230V OR 460V OR 575V THERMASENTRY MODULE
QTY 3 - THERMASENTRY THERMISTORS

REVISION DESCRIPTION FOR: MISC		SCALE NONE	UNITS IN	DRAWING, CONNECTION DIAGRAM		NIDEC MOTOR CORPORATION		
STL0211 -UPDATED FORMAT.		TOLERANCES ON DIMENSIONS (UNLESS OTHERWISE SPECIFIED)						
MATERIAL: ---		<u>INCHES</u>	<u>mm</u>	ISSUED BY R. KING	APPROVED BY C. CADE	REVISION DATE 23-FEB-11		
MUST BE COMPLIANT TO RoHS DIRECTIVE EU 2002/95/IEC AND REGULATION EC 1907/2006 (REACH) AS AMENDED		ANGLES X°= ±1°		CODE	DWG NO. 0845961	REV E	SHEET NUMBER 1 OF 1	DWG SIZE A