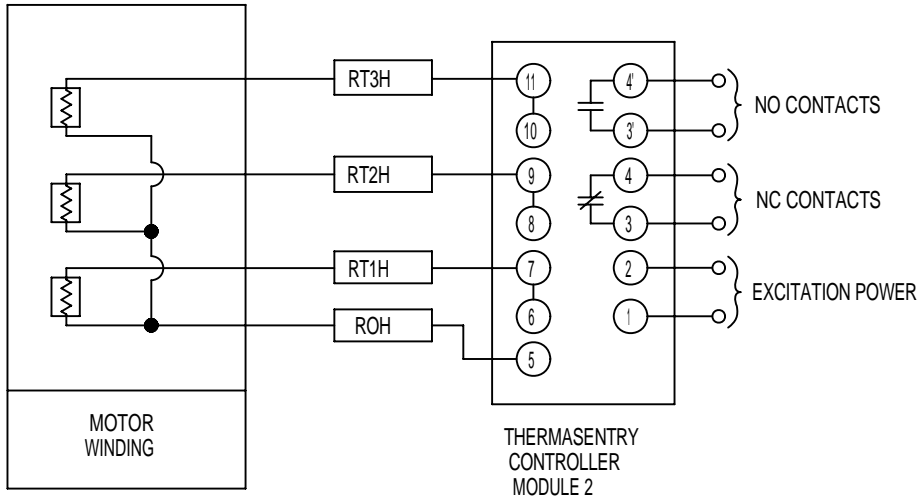
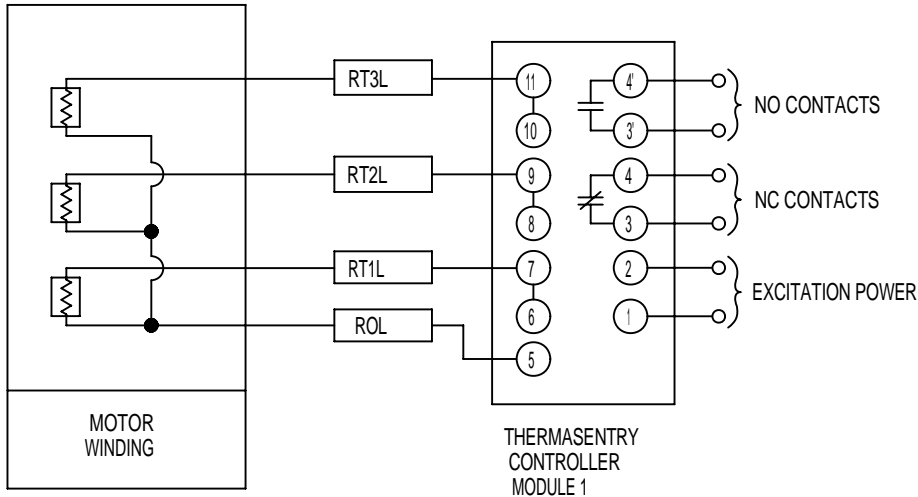


TYPICAL CONNECTION DIAGRAM, MOTOR MOUNTED OR REMOTE MOUNTED THERMASENTRY WITH NO/NC CONTACTS



THERMASENTRY THERMISTORS

1. THERE ARE QTY-3 THERMISTORS (1 PER PHASE FOR ALARM, LOW SPEED OR PRIMARY) POSITIVE TEMPERATURE COEFFICIENT (PTC) THERMISTORS INSTALLED IN THE MOTOR WINDING. THESE THERMISTORS ARE WIRED TO THERMASENTRY CONTROL MODULE.
2. THERE ARE QTY-3 THERMISTORS (1 PER PHASE FOR SHUTDOWN, HIGH SPEED OR SPARE) PTC THERMISTORS INSTALLED IN THE MOTOR WINDING. THESE THERMISTORS ARE WIRED TO THERMASENTRY CONTROL MODULE.
3. REFER TO CONNECTION DIAGRAM ATTACHED TO THE CONTROL MODULE FOR CORRECT WIRING OF THE CONTROL MODULE.

NOTES:

1. DO NOT APPLY VOLTAGE DIRECTLY ACROSS TERMINALS 3 AND 4 OR 3' AND 4'. OUTPUT IS RATED FOR 110 VOLTS. 5 MAX CURRENT.
2. INPUT TERMINALS 1 AND 2 MUST BE ENERGIZED BEFORE 3 AND 4 ARE NORMALLY CLOSED AND 3' AND 4' ARE NORMALLY OPEN.
3. DO NOT GROUND THERMISTOR CONNECTIONS. RO IS COMMON, NOT GROUND.
4. WINDING MODULE 1 MAY BE USED FOR ALARM, LOW SPEED (TWO WNDGS), OR PRIMARY.
5. WINDING MODULE 2 MAY BE USED FOR SHUTDOWN, HIGH SPEED (TWO WNDGS), OR SPARE.

ACCESSORY LISTING

QTY-3 WINDING THERMISTORS (ALARM, LOW SPEED OR PRIMARY)
 QTY-3 WINDING THERMISTORS (SHUTDOWN, HIGH SPEED OR SPARE)
 QTY-2 THERMASENTRY CONTROL MODULES

REVISION DESCRIPTION FOR: MISC		SCALE	NONE	UNITS	IN	TITLE		DRAWING, CUSTOMER CONNECTION DIAGRAM		NIDEC MOTOR CORPORATION	
STL0211 - UPDATED FORMAT.		TOLERANCES ON DIMENSIONS (UNLESS OTHERWISE SPECIFIED)									
MATERIAL:		INCHES		mm		ISSUED BY		APPROVED BY		REVISION DATE	
---						R. KING		C. CADE		23-FEB-11	
MUST BE COMPLIANT TO RoHS DIRECTIVE EU 2002/95/IEC AND REGULATION EC 1907/2006 (REACH) AS AMENDED		ANGLES		$X^\circ = \pm 1^\circ$		CODE		DWG NO.		REV	
								0948135		E	
										SHEET NUMBER	
										1 OF 1	
										DWG SIZE	
										A	