

EFFECTIVE:
27-JUN-11

SUPERSEDES:
05-AUG-03

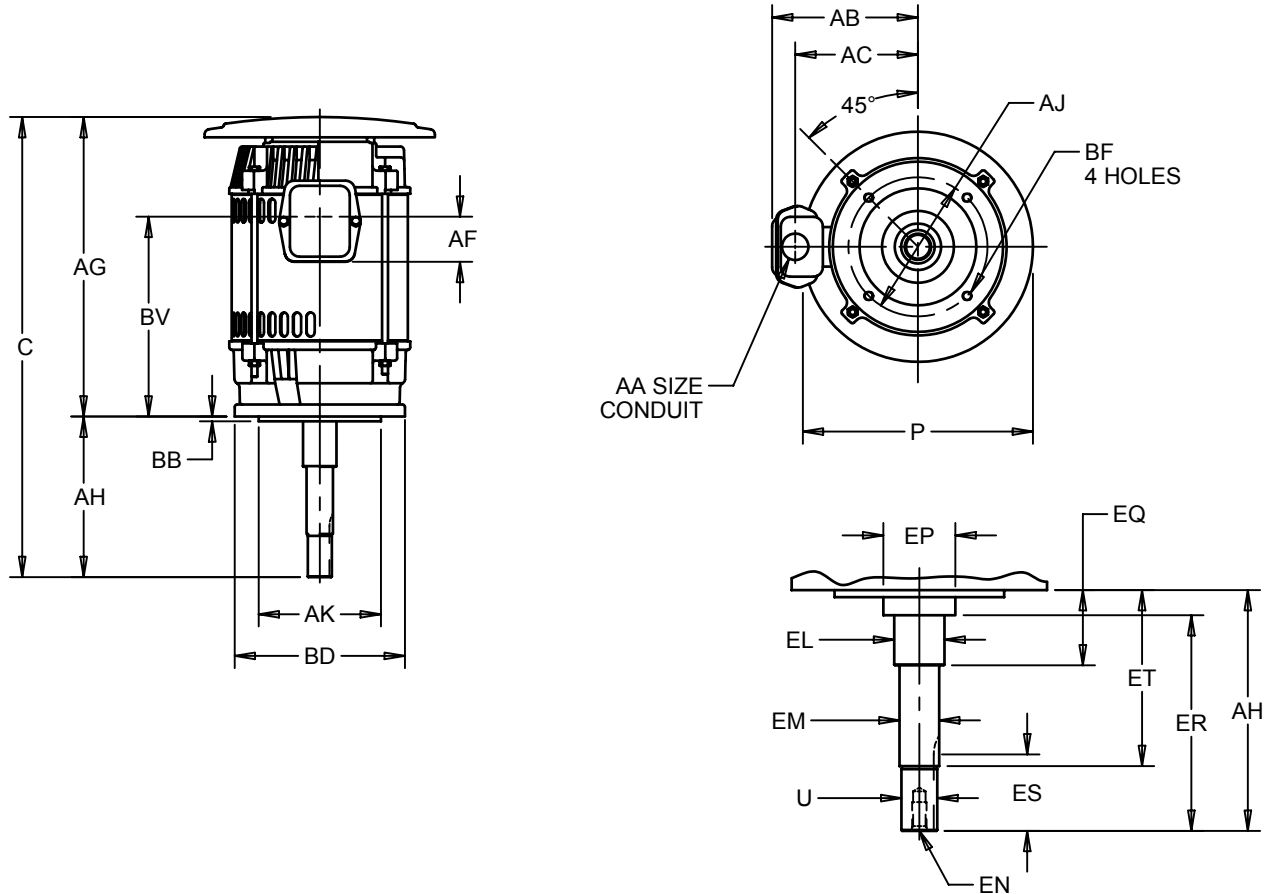
HORIZONTAL MOTORS

ODP CLOSE-COUPLED PUMP AND CANOPY CAP

FRAME: 182, 184JM, JP
BASIC TYPE: DF-1, DF4

PRINT:
07-1233

SHEET:
1 OF 1



ALL DIMENSIONS ARE IN INCHES AND MILLIMETERS

UNITS	P ²	U -.0005	AA	AB	AC	AF	AG	AJ	AK -.003	BB -.031
IN	10.38	.8745	.75	6.88	5.63	2.13	13.00	5.875	4.500	.156
MM	264	22.212		175	143	54	330	149.23	114.30	3.96

UNITS	BD MAX	BF ³	BV	EL -.002	EM -.0005	EN ³	EP MIN	SQ KEY
IN	6.63	3/8-16 X .63	8.25	1.250	1.0000	3/8-16 X .75	1.25	.188
MM	168		210	31.75	25.400		32	4.78

FRAME	UNITS	C	AH ±.031	EQ ±.015	ER MIN	ES MIN	ET ±.015
180JM	IN	17.25	4.250	.625	4.25	1.72	2.875
	MM	438	107.95	15.88	108	44	73.03
180JP	IN	20.31	7.313	1.563	7.19	1.75	5.938
	MM	516	185.75	39.70	183	44	150.83

1. ALL ROUGH DIMENSIONS MAY VARY BY .25" DUE TO CASTING AND/OR FABRICATION VARIATIONS.
2. LARGEST MOTOR WIDTH.
3. TAP SIZE AND BOLT PENETRATION ALLOWANCE.
4. ALL TAPPED HOLES ARE UNIFIED NATIONAL COARSE, RIGHT HAND THREAD.
5. CONDUIT OPENINGS MAY BE LOCATED IN STEPS OF 90° REGARDLESS OF LOCATION.
STANDARD AS SHOWN WITH CONDUIT OPENING DOWN.
6. TOLERANCES SHOWN ARE IN INCHES ONLY.
7. FRAME REFERENCE: 6.375/182/184

TOLERANCES	
FACE RUNOUT	.004 T.I.R.
PERMISSIBLE ECCENTRICITY OF MOUNTING RABBET	.004 T.I.R.
PERMISSIBLE SHAFT RUNOUT	.002 T.I.R.

07-1233/B

Nidec Motor Corporation
St. Louis, Missouri

INFORMATION DISCLOSED ON THIS DOCUMENT IS CONSIDERED PROPRIETARY AND SHALL NOT BE REPRODUCED OR DISCLOSED WITHOUT WRITTEN CONSENT OF NIDEC MOTOR CORPORATION



ISSUED BY
A. HINGANKAR
APPROVED BY
R. KING

IHP_DP_NMCA (MAR-2011) SOLIDEDGE