

EFFECTIVE:  
**30-JUN-11**

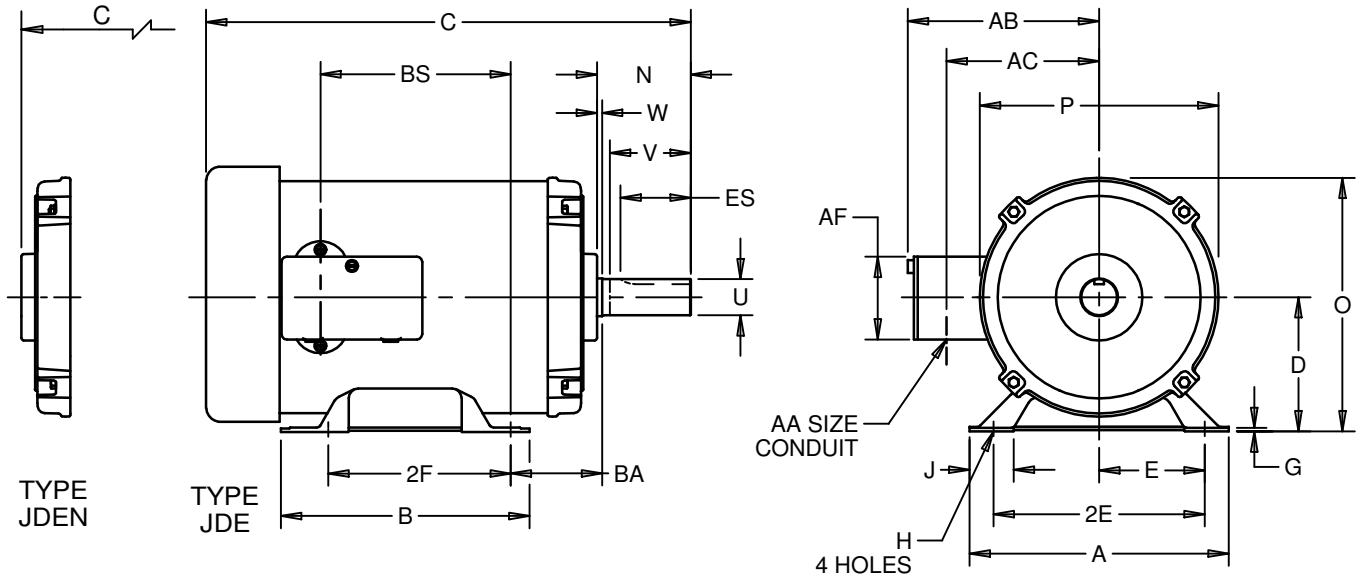
SUPERSEDES:  
**26-SEP-01**

# HORIZONTAL MOTORS AUTOMOTIVE DUTY

FRAME: 56  
BASIC TYPE: JDE, JDEN

PRINT:  
**07-1280**

SHEET:  
**1 OF 1**



ALL DIMENSIONS ARE IN INCHES AND MILLIMETERS

UNITS	A	B	D	E	2E	2F	G	H	J	N	P <sup>3</sup>
IN	6.50	4.00	3.50	2.44	4.88	3.00	.13	.88 x .34	1.59	1.94	6.84
MM	165	102	89	62	124	76	3		40	49	174

UNITS	U	V	W	AA	AB	AC	AF	BA	ES	SQ	KEY
IN	.6250	1.88	.06	.88	4.91	3.94	1.22	2.75	1.44	.188	
MM	15.875	48	2	22	125	100	31	70	37	4.77	

FRAME	TYPE	HP	POLES	UNITS	C	O	BS
56	JDEN	1/4	4, 6	IN	9.75	6.97	2.56
				MM	248	177	65
56	JDEN	1/3	2, 4	IN	9.75	6.97	2.56
				MM	248	177	65
56	JDE	1/3	6	IN	11.25	7.03	3.31
				MM	286	179	84
56	JDEN	1/2	2, 4	IN	10.50	6.97	3.31
				MM	267	177	84
56	JDE	1/2	6	IN	11.25	7.03	3.31
				MM	286	179	84
56	JDE	3/4	2	IN	10.50	7.03	3.31
				MM	267	179	84
56	JDE	3/4	4	IN	11.25	7.03	3.31
				MM	286	179	84
56	JDE	1	2	IN	11.25	7.03	3.31
				MM	286	179	84

- 1: ALL ROUGH CASTING DIMENSIONS MAY VARY BY .25" DUE TO CASTING AND OR FABRICATION VARIATIONS.
- 2: CONDUIT BOX MAY BE LOCATED ON EITHER SIDE OR ON TOP OF MOTOR. CONDUIT OPENINGS MAY BE LOCATED IN STEPS OF 90° REGARDLESS OF LOCATION. STANDARD AS SHOWN WITH CONDUIT OPENING DOWN.
- 3: LARGEST MOTOR WIDTH.
- 4: TOLERANCES SHOWN ARE IN INCHES ONLY.

07-1280/B

**Nidec Motor Corporation**  
St. Louis, Missouri

INFORMATION DISCLOSED ON THIS DOCUMENT IS CONSIDERED PROPRIETARY AND SHALL NOT BE REPRODUCED OR DISCLOSED WITHOUT WRITTEN CONSENT OF NIDEC MOTOR CORPORATION



ISSUED BY  
**A. HINGANKAR**  
APPROVED BY  
**R. KING**

IHP\_DP\_NMCA (MAR-2011) SOLIDEDGE