

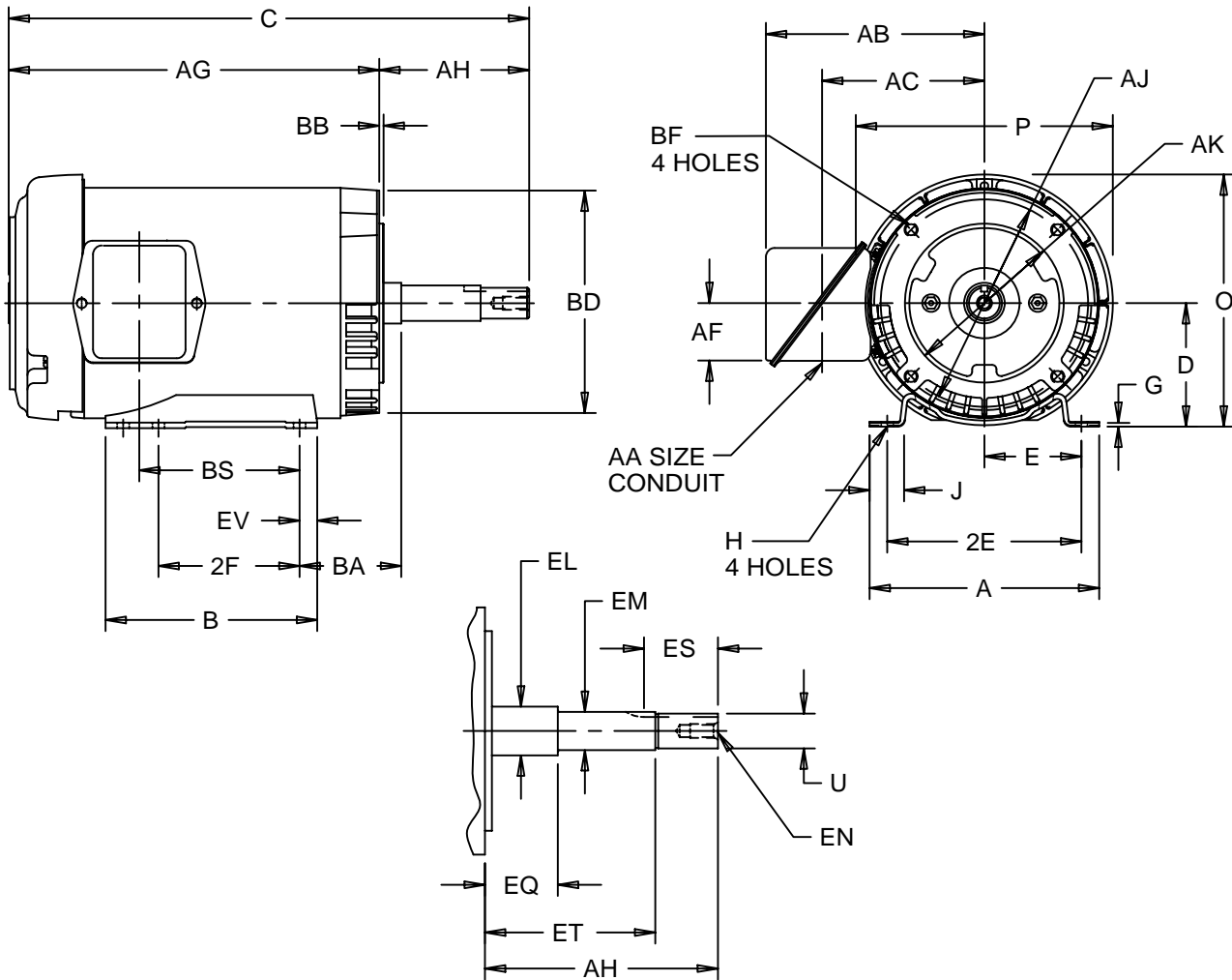
EFFECTIVE:
06-JUL-11

SUPERSEDES:
30-OCT-95

HORIZONTAL MOTORS
TEFC-CLOSE COUPLED PUMP
FRAME: 143JM
BASIC TYPE: UT-4

PRINT:
07-1852

SHEET:
1 OF 1



ALL DIMENSIONS ARE IN INCHES AND MILLIMETERS

UNITS	A	B	C	E	G	J	O	P ²	AA	AB	AC
IN	6.50	6.00	14.25	2.75	.13	.88	7.19	7.31	.75	6.13	4.50
MM	165	152	362	70	3	22	183	186	19	156	114

UNITS	AF	AG	AH	AJ	BA	BB	BD	BF ⁴	EV
IN	1.63	10.00	4.25	5.88	2.88	.13	6.50	3/8-16 x .75	.50
MM	41	254	108	149	73	3	165		13

UNITS	BS	EN ⁴	EQ	ES MIN	ET	SQ KEY
IN	3.94	3/8-16 x .75	.63	1.75	2.88	.188
MM	100		16	44	73	4.78

UNITS	D	2E	2F	H	U	AK	EL	EM
IN	-.06	±.03	±.03	+.05	-.0005	-.003	-.002	-.0005
MM	3.50	5.50	4.00	.34	.8750	4.500	1.156	1.0000
MM	89	140	102	9	22.225	114.30	29.36	25.400

1. ALL ROUGH DIMENSIONS MAY VARY BY .25" DUE TO CASTING AND/OR FABRICATION VARIATIONS.
2. LARGEST MOTOR WIDTH.
3. CONDUIT BOX MAY BE LOCATED ON EITHER SIDE. CONDUIT OPENINGS MAY BE LOCATED IN STEPS OF 180° REGARDLESS OF LOCATION. STANDARD AS SHOWN WITH CONDUIT OPENING DOWN.
4. TAP SIZE AND BOLT PENETRATION ALLOWANCE.
5. ALL TAPPED HOLES ARE UNIFIED NATIONAL COARSE, RIGHT HAND THREAD.
6. TOLERANCES SHOWN ARE IN INCHES ONLY.

07/1852/A

Nidec Motor Corporation
St. Louis, Missouri

INFORMATION DISCLOSED ON THIS DOCUMENT IS CONSIDERED PROPRIETARY AND SHALL NOT BE REPRODUCED OR DISCLOSED WITHOUT WRITTEN CONSENT OF NIDEC MOTOR CORPORATION



ISSUED BY
R. KING
APPROVED BY
K. POTTER

IHP_DP_NMCA (MAR-2011) SOLIDEDGE