

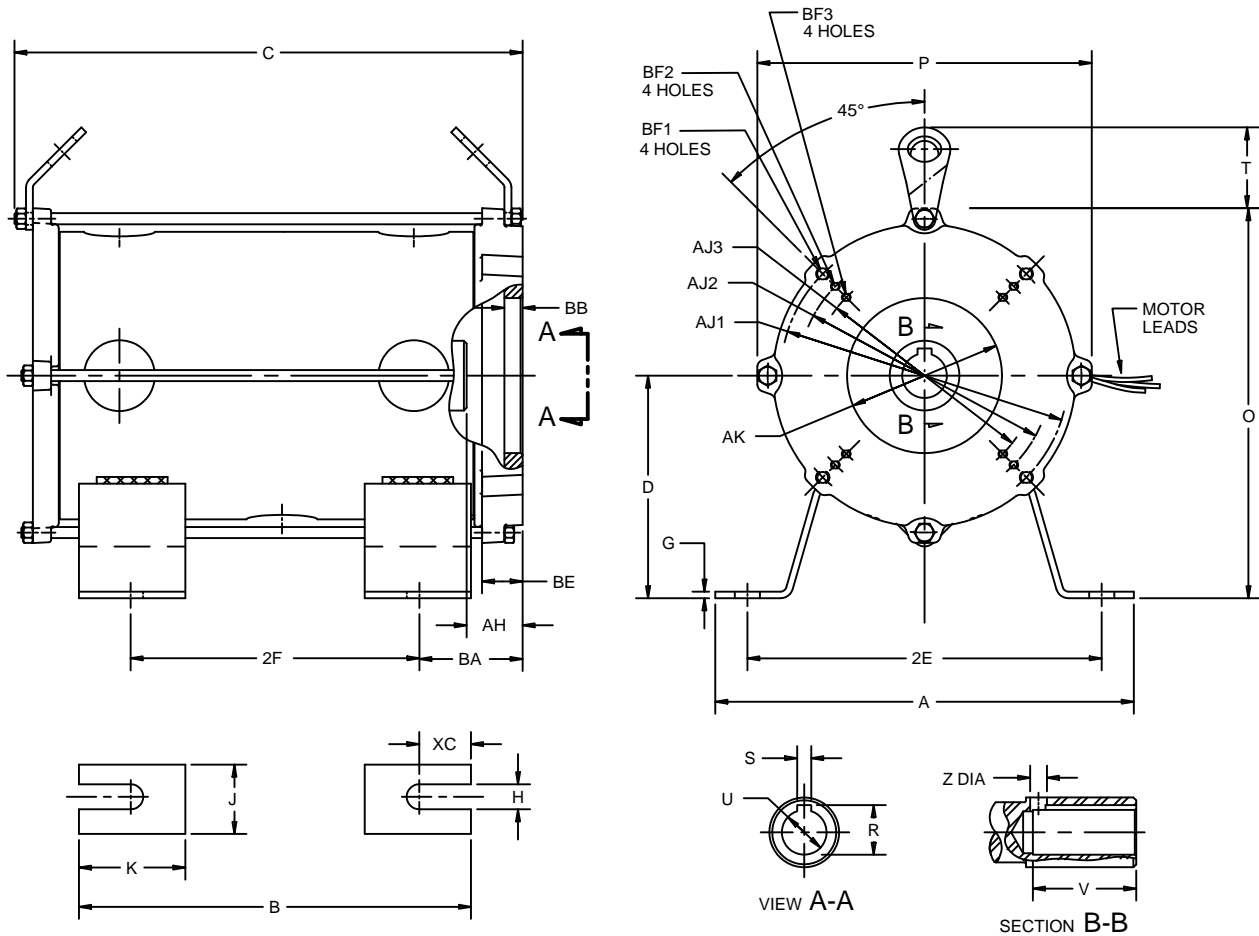
EFFECTIVE:  
**04-FEB-14**

**DIMENSION PRINT**  
THREE PHASE  
FRAME: 160ZBS  
BASIC TYPE: IMH

PRINT:  
**07-1896**

SUPERSEDES:  
**21-APR-11**

SHEET:  
**1 OF 1**



**MOTOR LEADS**

TOTAL LENGTH	BUTT SPLICES	
87"	12"	47"
2200 MM	300 MM	1200 MM
TOLERANCE: ±1" or ±25 MM WHEN MEASURED FROM FACE OF REAR BRACKET (END BELL).		

**SHAFT DIMENSIONS**

UNITS	R	S	U
INCHES	1.407 1.390	.398 .395	1.262 1.261
MM	35.74 35.31	10.11 10.03	32.06 32.03

**ENG. REF.**

40-50 HP

UNITS	V	Z
INCHES	2.913 ±.015	.472 ±.015
MM	74.0 ±.38	12.0 ±.38

**MOTOR DIMENSIONS**

UNITS	A	B	C	D	2E	2F	G	H	J	K	O	P	T
INCHES	11.81	11.06	17.48	6.30	10.00	8.15	.19	.75	1.97	3.00	11.06	9.53	2.28
TOL.	±.06	±.06	±.12	±.06	±.06	±.06	±.015	±.015	±.06	±.06	±.12	±.12	±.12
MM	300	281	444	160	254	207	4.83	19	50	76.2	281	242	57.91
TOL.	±1.5	±1.5	±3.0	±1.5	±1.5	±1.5	±.38	±.38	±1.5	±1.5	±3.0	±3.0	±3.0

UNITS	AH	AJ1	AJ2	AJ3	AK	BA	BB	BE	BF1 <sup>1</sup>	BF2 <sup>1</sup>	BF3 <sup>1</sup>	XC
INCHES	1.596	8.125	7.125	6.250	4.376	2.84	.51	1.146	.375-16	.250-20	.250-20	1.46
TOL.	1.557	±.015	±.015	±.015	4.375	±.06	±.06	1.142	X .56	X .50	X .50	±.06
MM	40.55	206.4	181.0	158.8	111.15	72	13	29.1				37
TOL.	39.55	±.38	±.38	±.38	111.13	±1.5	±1.5	29.0				±1.5

1. TAP SIZE & BOLT PENETRATION ALLOWANCE

07-1896/C

**Nidec Motor Corporation**  
St. Louis, Missouri

INFORMATION DISCLOSED ON THIS DOCUMENT  
IS CONSIDERED PROPRIETARY AND SHALL NOT BE  
REPRODUCED OR DISCLOSED WITHOUT WRITTEN  
CONSENT OF NIDEC MOTOR CORPORATION



ISSUED BY  
**R. KING**  
APPROVED BY  
**J. HAGENE**

IHP\_DP\_NMCA (MAR-2011) SOLIDEDGE