

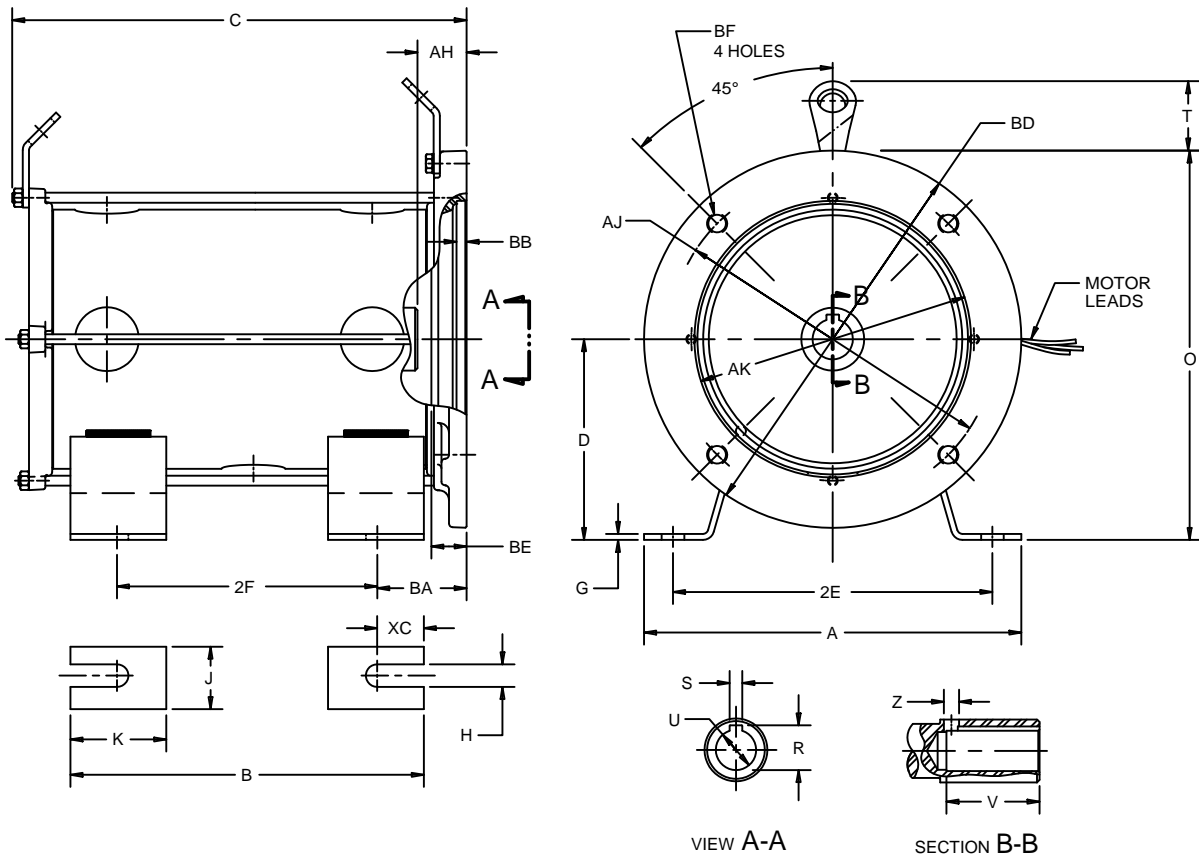
EFFECTIVE:  
04-FEB-14

SUPERSEDES:  
21-APR-11

**DIMENSION PRINT**  
THREE PHASE  
FRAME: 160LCS  
BASIC TYPE: IMH

PRINT:  
07-1897

SHEET:  
1 OF 1



ENG. REF.  
15-30 HP

MOTOR LEADS

| TOTAL LENGTH   | BUTT SPLICES |         |
|--|--------------|---------|
| 87"  | 12"          | 47"     |
| 2200 MM  | 300 MM       | 1200 MM |
| TOLERANCE: ±1" or ±25 MM WHEN MEASURED FROM FACE OF REAR BRACKET (END BELL). |              |         |

SHAFT DIMENSIONS

| UNITS  | R              | S              | U              | UNITS  | V     | Z     |
|--------|----------------|----------------|----------------|--------|-------|-------|
| INCHES | 1.407<br>1.390 | .398<br>.395   | 1.262<br>1.261 | INCHES | 2.913 | 0.472 |
| MM     | 35.74<br>35.31 | 10.11<br>10.03 | 32.06<br>32.03 | MM     | 74.0  | 12.0  |
|        |                |                |                | TOL.   | ±.015 | ±.015 |
|        |                |                |                | TOL.   | ±.38  | ±.38  |

MOTOR DIMENSIONS

| UNITS  | AH    | AJ     | AK      | BA   | BB   | BD    | BE    | BF <sup>1</sup> | XC   |
|--------|-------|--------|---------|------|------|-------|-------|-----------------|------|
| INCHES | 1.557 | 10.236 | 8.667   | 2.80 | 0.32 | 11.81 | 1.106 | X               | 1.46 |
| TOL.   | 1.518 | ±.015  | 8.655   | ±.06 | ±.06 | ±.06  | 1.102 |                 | ±.06 |
| MM     | 39.55 | 260.0  | 220.15  | 71   | 8    | 300   | 28.1  | M16-2           | 37   |
| TOL.   | ±3.55 | ±.38   | ±219.85 | ±1.5 | ±1.5 | ±1.5  | ±28.0 | THRU            | ±1.5 |

| UNITS  | A     | B     | C     | D    | 2E    | 2F   | G     | H     | J    | K    | O     | T     |
|--------|-------|-------|-------|------|-------|------|-------|-------|------|------|-------|-------|
| INCHES | 11.81 | 11.06 | 14.09 | 6.30 | 10.00 | 8.15 | 0.19  | 0.75  | 1.97 | 3.00 | 12.20 | 2.17  |
| TOL.   | ±.06  | ±.06  | ±.12  | ±.06 | ±.06  | ±.06 | ±.015 | ±.015 | ±.06 | ±.06 | ±.12  | ±.12  |
| MM     | 300   | 281   | 358   | 160  | 254   | 207  | 4.83  | 19    | 50   | 76.2 | 310   | 55.12 |
| TOL.   | ±1.5  | ±1.5  | ±3.0  | ±1.5 | ±1.5  | ±1.5 | ±.38  | ±.38  | ±1.5 | ±1.5 | ±3.0  | ±3.0  |

1. TAP SIZE & BOLT PENETRATION ALLOWANCE

07-1897/B

**Nidec Motor Corporation**  
St. Louis, Missouri

INFORMATION DISCLOSED ON THIS DOCUMENT IS CONSIDERED PROPRIETARY AND SHALL NOT BE REPRODUCED OR DISCLOSED WITHOUT WRITTEN CONSENT OF NIDEC MOTOR CORPORATION



ISSUED BY  
**R. KING**  
APPROVED BY  
**J. HAGENE**

IHP\_DP\_NMCA (MAR-2011) SOLIDEDGE