

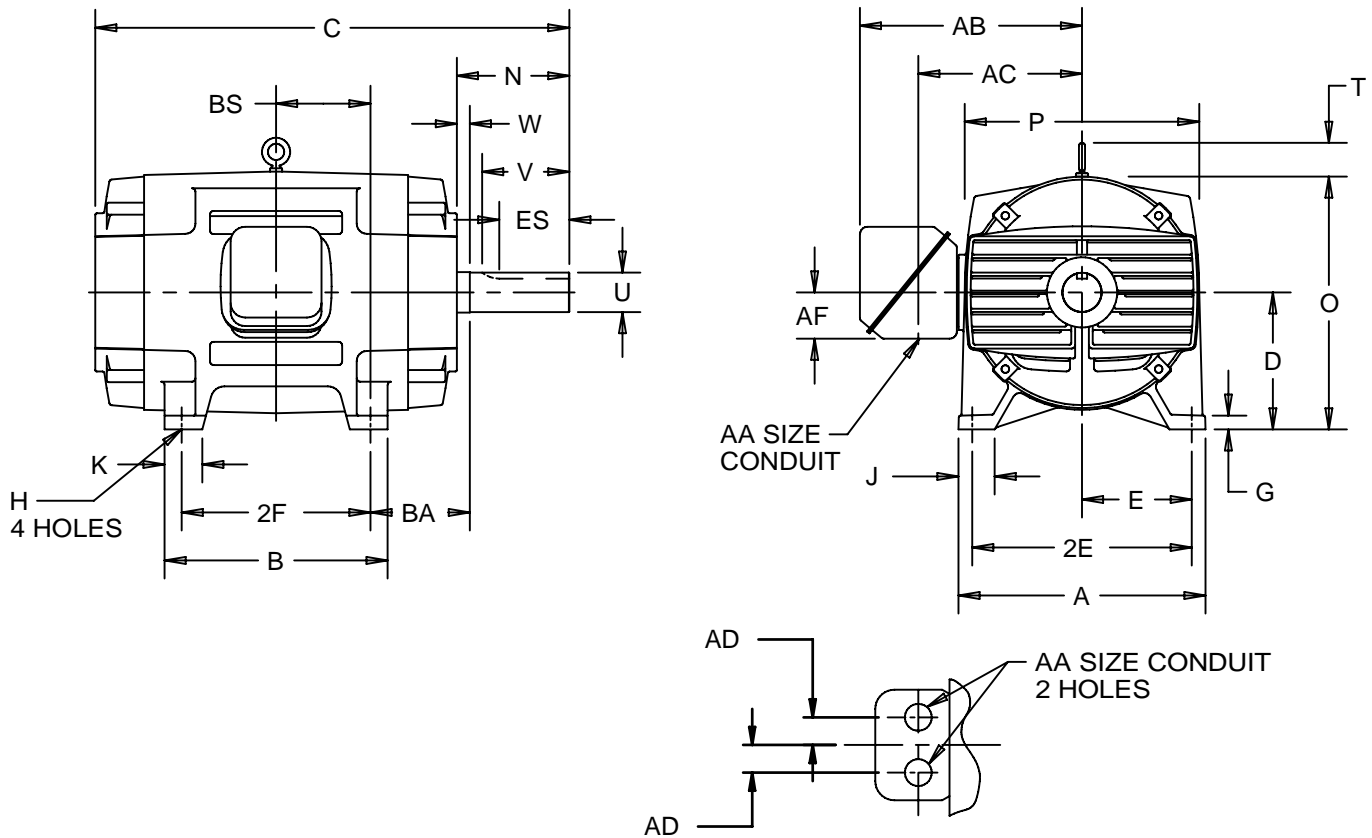
EFFECTIVE:
07-JUN-13

DIMENSION PRINT
ODP - WORLD MOTOR
FRAME: 449T, TM, TS
BASIC TYPE: FR

PRINT:
07-2009-16

SUPERSEDES:
11-APR-12

SHEET:
1 OF 1



ALL DIMENSIONS ARE IN INCHES AND MILLIMETERS

UNITS	A	D -.06	E	2E ±.03	G	H +.05	J	O	P ²	T	W	BA
IN	22.00	11.00	9.00	18.00	1.38	.81	4.00	22.00	22.25	2.94	.25	7.50
MM	559	279	229	457	35	21	102	559	565	75	6	191

UNITS	AB	AC	AD	BA
IN	28.68	21.56	3.00	7.50
MM	728	548	76	191

FRAME	UNITS	B	C	2F ±.03	K	N	U -.001	V MIN	BS	ES MIN	SQ KEY
449T	IN	28.25	48.25	25.00	3.25	8.75	3.375	8.25	12.50	6.88	.875
	MM	718	1226	635	83	222	85.73	210	318	175	22.23
449TM	IN	28.25	44.50	25.00	3.25	5.00	2.875	4.50	12.50	3.50	.750
	MM	718	1130	635	83	127	73.03	114	318	89	19.05
449TS	IN	28.25	44.50	25.00	3.25	5.00	2.375	4.50	12.50	3.00	.625
	MM	718	1130	635	83	127	60.33	114	318	76	15.88

O/B TYPE	UNITS	AF	AA
STEEL	IN	5.94	2 1/2 NPT
	MM	151	3 NPT
CAST IRON	IN	10.94	3 1/2 NPT
	MM	278	4 NPT

1: ALL ROUGH DIMENSIONS MAY VARY BY .25" DUE TO CASTING AND/OR FABRICATION VARIATIONS.
2: LARGEST MOTOR WIDTH.
3: TOLERANCES SHOWN ARE IN INCHES ONLY.

4: CONDUIT BOX MAY BE LOCATED ON EITHER SIDE OF MOTOR. CONDUIT OPENINGS MAY BE LOCATED IN STEPS OF 90 DEGREES REGARDLESS OF LOCATION. STANDARD AS SHOWN WITH CONDUIT OPENING DOWN.

07-2009/B

Nidec Motor Corporation
St. Louis, Missouri

INFORMATION DISCLOSED ON THIS DOCUMENT IS CONSIDERED PROPRIETARY AND SHALL NOT BE REPRODUCED OR DISCLOSED WITHOUT WRITTEN CONSENT OF NIDEC MOTOR CORPORATION



ISSUED BY
R. KING
APPROVED BY
K. VOSS

IHP_DP_NMCA (MAR-2011) SOLIDEDGE