

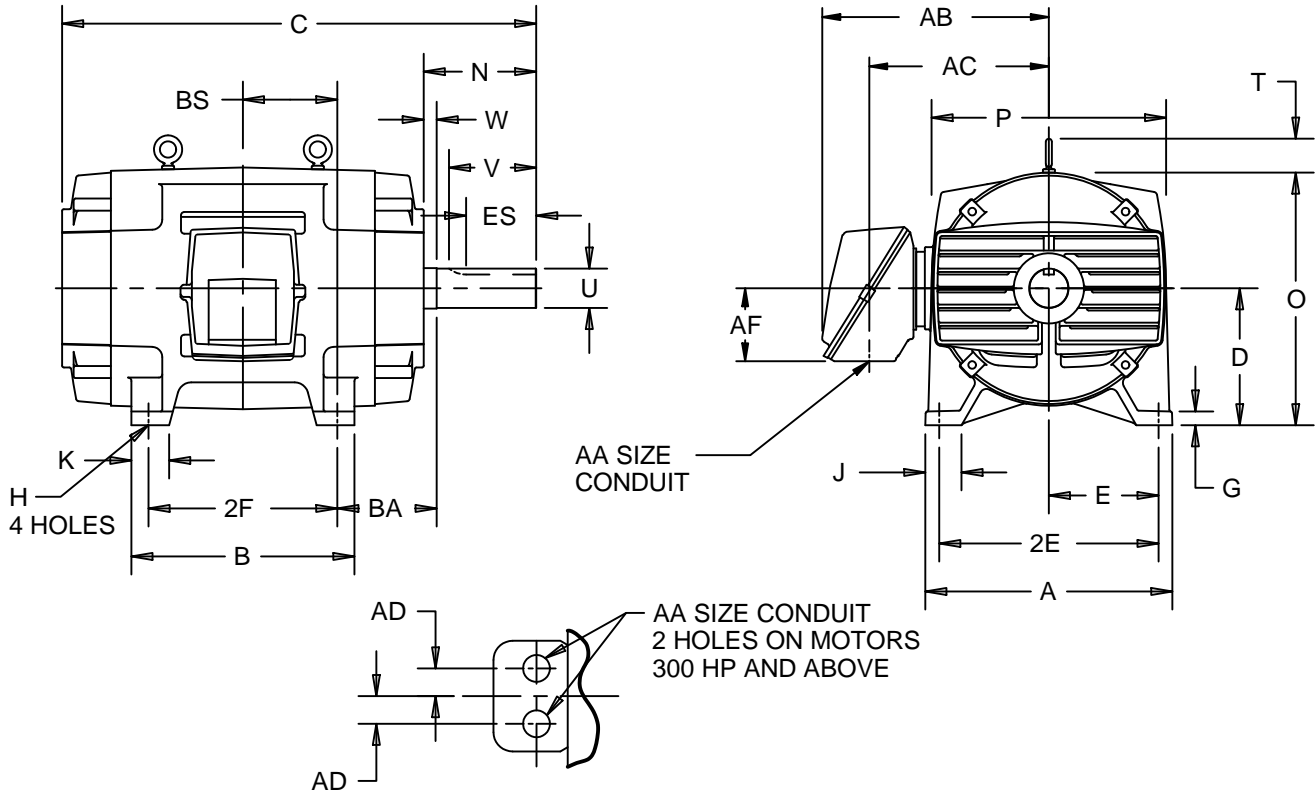
EFFECTIVE:
17-DEC-15

SUPERSEDES:
05-AUG-11

DIMENSION PRINT
OPEN DRIP PROOF
FRAME: 449T, TM, TS
BASIC TYPE: R

PRINT:
07-2009

SHEET:
1 OF 1



ALL DIMENSIONS ARE IN INCHES AND MILLIMETERS

UNITS	A	D -.06	E	2E ±.03	G	H +.05	J	O	P ²	T	W	BA
IN	22.00	11.00	9.00	18.00	1.38	.81	4.00	22.06	22.94	3.25	.25	7.50
MM	559	279	229	457	35	21	102	560	583	83	6	191

FRAME	UNITS	B	C	2F ±.03	K	N	U -.001	V MIN	BS	ES MIN	SQ KEY
449T	IN	28.25	48.25	25.00	3.25	8.75	3.375	8.25	12.50	6.91	.875
	MM	718	1226	635	83	222	85.73	210	318	176	22.23
449TM	IN	28.25	44.50	25.00	3.25	5.00	2.875	4.50	12.50	3.50	.750
	MM	718	1130	635	83	127	73.03	114	318	89	19.05
449TS	IN	28.25	44.50	25.00	3.25	5.00	2.375	4.50	12.50	3.03	.625
	MM	718	1130	635	83	127	60.33	114	318	77	15.88

HP	UNITS	AA	AB	AC	AD	AF
201 TO 300	IN	3 1/2 NPT	22.44	16.81	---	8.06
	MM		570	427	---	205
300 AND UP	IN	3 NPT	22.44	16.81	2.75	8.06
	MM		570	427	70	205

1: ALL ROUGH CASTING DIMENSIONS MAY VARY BY .25"
DUE TO CASTING AND/OR FABRICATION VARIATIONS.
2: LARGEST MOTOR WIDTH.

3: CONDUIT BOX MAY BE LOCATED ON EITHER SIDE
OF MOTOR. CONDUIT OPENINGS MAY BE LOCATED IN
STEPS OF 90 DEGREES REGARDLESS OF LOCATION.
STANDARD AS SHOWN WITH CONDUIT OPENING DOWN.
4: TOLERANCES SHOWN ARE IN INCHES ONLY.

07-2009/C

Nidec Motor Corporation
St. Louis, Missouri

INFORMATION DISCLOSED ON THIS DOCUMENT
IS CONSIDERED PROPRIETARY AND SHALL NOT BE
REPRODUCED OR DISCLOSED WITHOUT WRITTEN
CONSENT OF NIDEC MOTOR CORPORATION



ISSUED BY
R. KING
APPROVED BY
J. O'BRIEN

IHP_DP_NMCA (MAR-2011) SOLIDEDGE