

EFFECTIVE:  
05-APR-11

SUPERSEDES:  
04-AUG-03

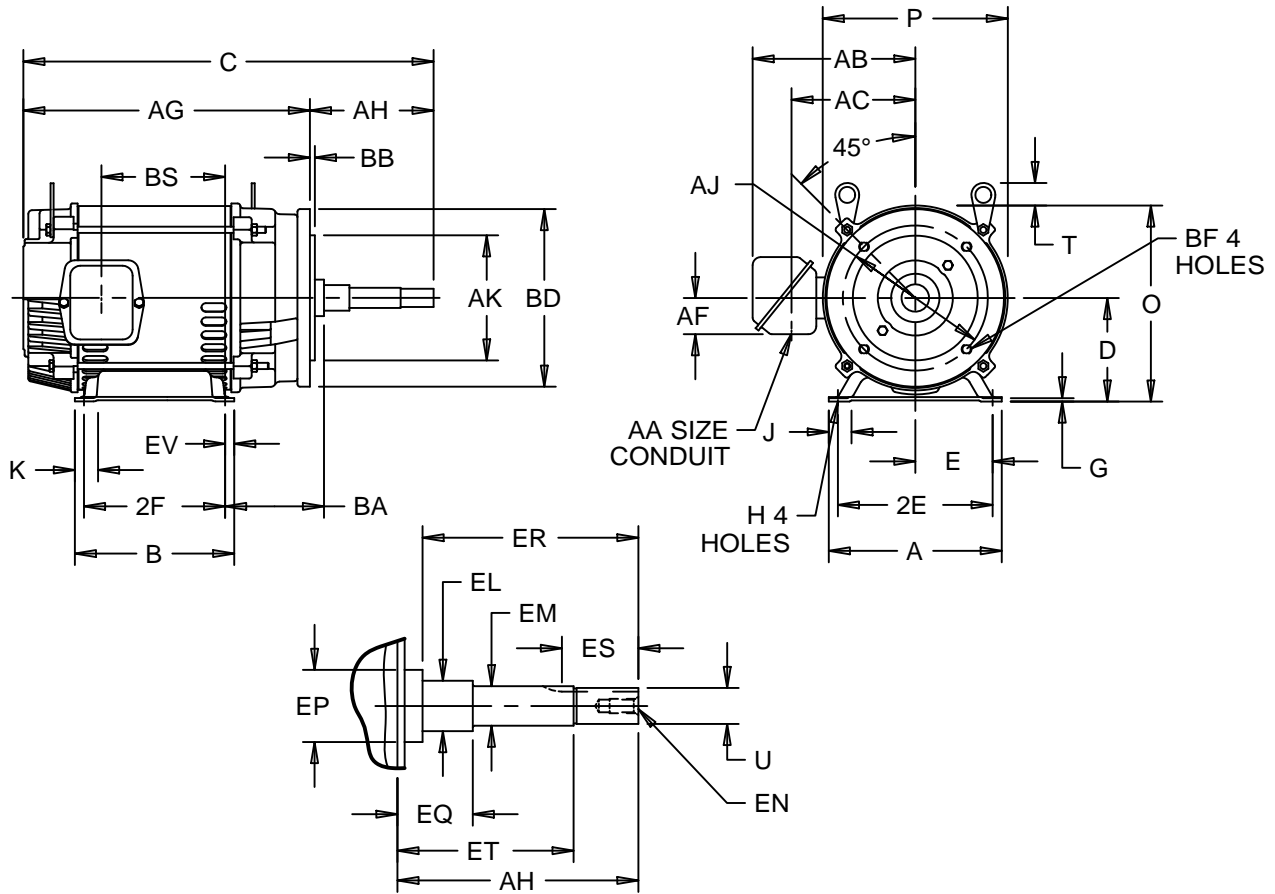
# HORIZONTAL MOTORS

## ODP CLOSE-COUPLED PUMP

FRAME: 182, 184JM, JP  
BASIC TYPE: D4, D1

PRINT:  
07-2011

SHEET:  
1 OF 1



ALL DIMENSIONS ARE IN INCHES AND MILLIMETERS

UNITS	A	B	D	E	2E	G	H	J	K	O	P <sup>2</sup>	T <sup>6</sup>
IN	8.75	6.50	4.50	3.75	7.50	.19	.41	1.13	2.00	8.50	8.00	.94
MM	222	165	114	95	191	5	10	29	51	216	203	24

UNITS	U	AA	AB	AC	AF	AG	AJ	AK	BA	BB	BD
IN	-.0005		6.88	5.63	2.13	13.19	5.875	4.500	3.63	.156	6.63
MM	22.212	.75	175	143	54	335	149.23	114.30	92	3.96	168

UNITS	BF <sup>4</sup>	BS	BS	EL	EM	EN <sup>4</sup>	EP	ES	EV	SQ
IN		F-1	F-2	-.002	-.0005		MIN	MIN		KEY
IN		6.00	1.00	1.250	1.0000		1.25	1.66	.50	.188
MM	3/8-16 X .56	152	25	31.75	25.400	3/8-16 X .75	32	42	13	4.78

FRAME	UNITS	2F	FRAME	UNITS	C	AH	EQ	ER	ET
		±.03				±.031	±.015	MIN	±.015
182JM,JP	IN	4.50	180JM	IN	17.44	4.250	.625	4.25	2.875
	MM	114		MM	443	107.95	15.88	108	73.03
184JM,JP	IN	5.50	180JP	IN	20.50	7.313	1.563	7.31	5.938
	MM	140		MM	521	185.75	39.70	186	150.83

- ALL ROUGH DIMENSIONS MAY VARY BY .25" DUE TO CASTING AND/OR FABRICATION VARIATIONS.
- LARGEST MOTOR WIDTH.
- STANDARD ASSEMBLY POSITION F-1 SHOWN. F-2 IS PROVIDED WHEN SPECIFIED.CONDUIT OPENINGS MAY BE LOCATED IN STEPS OF 90 DEGREES REGARDLESS OF LOCATION. STANDARD AS SHOWN WITH CONDUIT OPENING DOWN.
- TAP SIZE AND BOLT PENETRATION ALLOWANCE.
- ALL TAPPED HOLES ARE UNIFIED NATIONAL COARSE, RIGHT HAND THREAD.
- LIFTING LUGS - WHEN SPECIFIED ON BILL.
- TOLERANCES SHOWN ARE IN INCHES ONLY.
- FRAME REFERENCE: 7.750/182/184

TOLERANCES	
FACE RUNOUT	.004 T.I.R.
PERMISSIBLE ECCENTRICITY OF MOUNTING RABBET	.004 T.I.R.
PERMISSIBLE SHAFT RUNOUT	.002 T.I.R.

07-2011/B

**Nidec Motor Corporation**  
St. Louis, Missouri

INFORMATION DISCLOSED ON THIS DOCUMENT IS CONSIDERED PROPRIETARY AND SHALL NOT BE REPRODUCED OR DISCLOSED WITHOUT WRITTEN CONSENT OF NIDEC MOTOR CORPORATION



ISSUED BY  
**L. CUESTA**  
APPROVED BY  
**F. LARA**

IHP\_DP\_NMCA (MAR-2011) SOLIDEDGE