

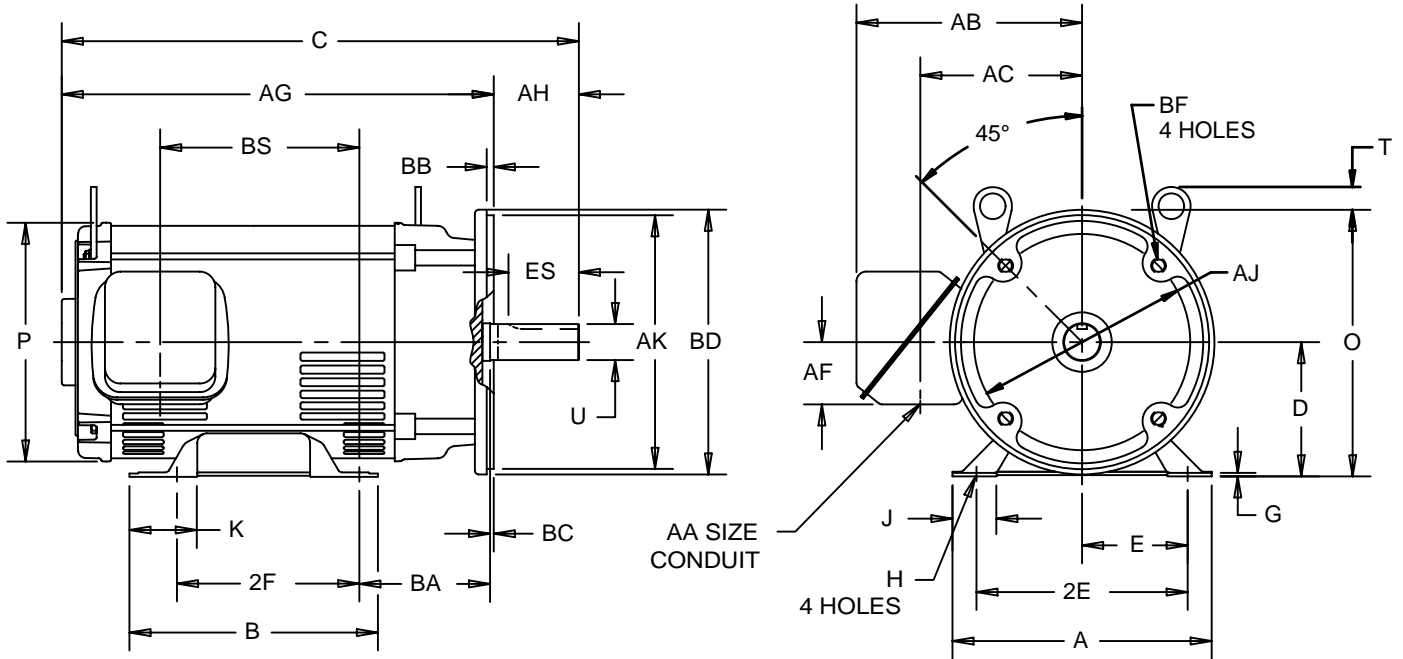
EFFECTIVE:  
14-JUN-12

SUPERSEDES:  
13-APR-11

**HORIZONTAL MOTORS**  
ODP FOOTED - WITH C FACE  
FRAME: 182, 184TC  
BASIC TYPE: D

PRINT:  
07-2034

SHEET:  
1 OF 1



ALL DIMENSIONS ARE IN INCHES AND MILLIMETERS

UNITS	A	B	C	D -.06	E	2E ±.03	G	H +.05	J	K	O
IN	8.75	6.50	15.75	4.50	3.75	7.50	.19	.41	1.13	2.00	8.50
MM	222	165	400	114	95	191	5	10	29	51	216

UNITS	P <sup>2</sup>	T <sup>6</sup>	U -.0005	AA	AB	AC	AF	AG	AH	AJ	AK -.003
IN	8.00	.94	1.1250	.75	6.88	5.63	2.13	13.13	2.63	7.250	8.500
MM	203	24	28.575		175	143	54	334	67	184.15	215.90

UNITS	BA	BB MIN	BC	BD MAX	BF <sup>4</sup>	BS F-1	BS F-2	ES MIN	EV	SQ KEY
IN	3.50	.25	.13	9.00	1/2-13 X .75	6.00	.88	1.78	.50	.250
MM	90	6	3	229		152	22	45	13	6.35

FRAME	UNITS	2F ±.03
182TC	IN	4.50
	MM	114
184TC	IN	5.50
	MM	140

TOLERANCES	
FACE RUNOUT	.004 T.I.R.
PERMISSIBLE ECCENTRICITY OF MOUNTING RABBET	.004 T.I.R.
PERMISSIBLE SHAFT RUNOUT	.002 T.I.R.

1. ALL ROUGH DIMENSIONS MAY VARY BY .25" DUE TO CASTING AND/OR FABRICATION VARIATIONS.
2. LARGEST MOTOR WIDTH.
3. STANDARD ASSEMBLY POSITION F-1 SHOWN. F-2 IS PROVIDED WHEN SPECIFIED. CONDUIT OPENINGS MAY BE LOCATED IN STEPS OF 180 DEGREES REGARDLESS OF LOCATION. STANDARD AS SHOWN WITH CONDUIT OPENING DOWN.
4. TAP SIZE AND BOLT PENETRATION ALLOWANCE.
5. ALL TAPPED HOLES ARE UNIFIED NATIONAL COARSE, RIGHT HAND THREAD.
6. LIFTING LUGS - WHEN SPECIFIED ON BILL.
7. TOLERANCES SHOWN ARE IN INCHES ONLY.
8. FRAME REFERENCE: 7.750/182/184

07-2034/F

**Nidec Motor Corporation**  
St. Louis, Missouri

INFORMATION DISCLOSED ON THIS DOCUMENT IS CONSIDERED PROPRIETARY AND SHALL NOT BE REPRODUCED OR DISCLOSED WITHOUT WRITTEN CONSENT OF NIDEC MOTOR CORPORATION



ISSUED BY  
**R. KING**  
APPROVED BY  
**J. O'BRIEN**

IHP\_DP\_NMCA (MAR-2011) SOLIDEDGE