

EFFECTIVE:
30-MAR-12

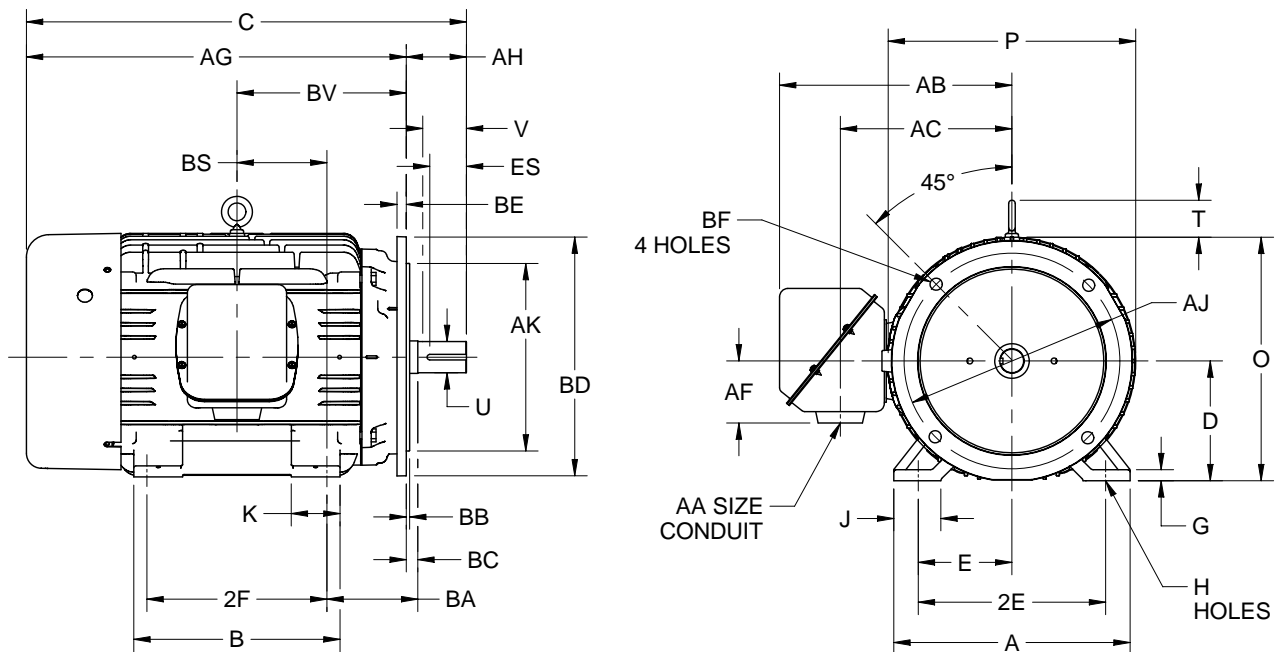
HORIZONTAL MOTORS

PRINT:
07-2171

SUPERSEDES:
15-FEB-01

FRAME: 320UD
BASIC TYPE: JAD, JDE

SHEET:
1 OF 1



ALL DIMENSIONS ARE IN INCHES AND MILLIMETERS

	A	B	C	D -.06	E	2E ±.03	G	H +.05	J
IN	15.75	13.75	30.56	8.00	6.25	12.50	.75	.66	3.19
MM	400	349	776	203	159	318	19	17	81

	K	O	P ²	T	U -.001	V MIN	AA	AB	AC
IN	3.25	16.25	16.88	2.50	1.875	5.00	2 1/2 NPT	15.53	11.31
MM	83	413	429	64	47.63	127		394	287

	AF	AG	AH	AJ	AK -.005	BA	BB MIN	BC	BD MAX
IN	4.19	25.31	5.25	16.000	14.000	5.25	.22	0	18.00
MM	106	643	133	406.40	355.60	133	6	0	457

	BF	BS	BV	ES MIN	SQ. KEY
IN	.81	6.00	11.25	3.91	.500
MM	21	152	286	99	12.70

	FRAME	2F ±.03
IN	324UD	10.50
MM		267
IN	326UD	12.00
MM		305

TOLERANCES	
FACE RUNOUT	.007 T.I.R.
PERMISSIBLE ECCENTRICITY OF MOUNTING RABBET	.007 T.I.R.
PERMISSIBLE SHAFT RUNOUT	.003 T.I.R.

1. DIMENSIONS MAY VARY .25" DUE TO CASTING AND/OR FABRICATION VARIATIONS.
2. LARGEST MOTOR WIDTH
3. TOLERANCES SHOWN ARE IN INCHES ONLY.

4. CONDUIT BOX MAY BE LOCATED ON EITHER SIDE OF MOTOR. CONDUIT OPENINGS MAY BE LOCATED IN STEPS OF 90 DEGREES REGARDLESS OF LOCATION. STANDARD AS SHOWN WITH CONDUIT OPENING DOWN.

07-2171/A

Nidec Motor Corporation
St. Louis, Missouri

INFORMATION DISCLOSED ON THIS DOCUMENT IS CONSIDERED PROPRIETARY AND SHALL NOT BE REPRODUCED OR DISCLOSED WITHOUT WRITTEN CONSENT OF NIDEC MOTOR CORPORATION



ISSUED BY
K. FRIEDMAN
APPROVED BY
J. HAGENE

IHP_DP_NMCA (MAR-2011) SOLIDEDGE