

EFFECTIVE:
11-MAY-11

HORIZONTAL MOTORS

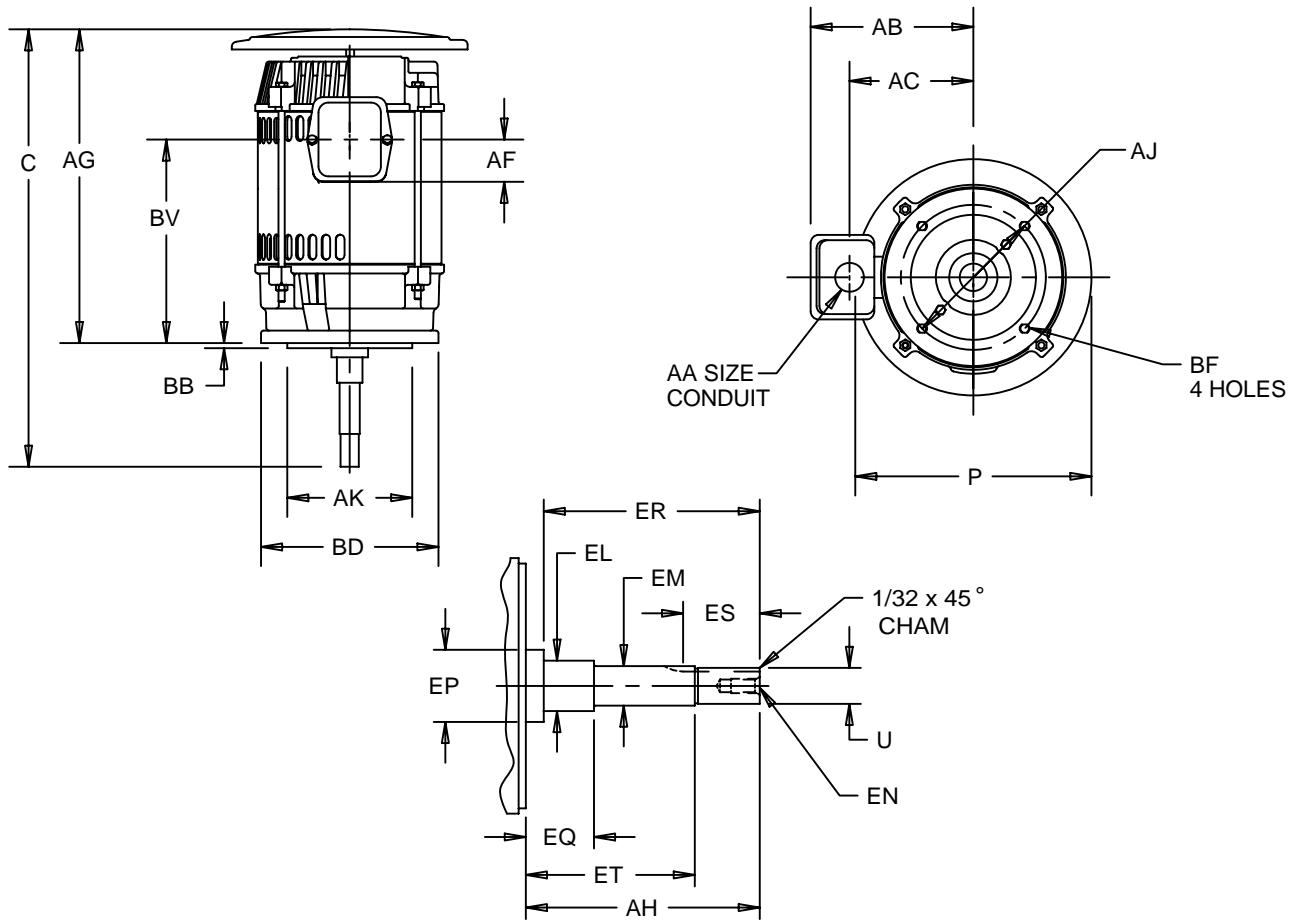
CLOSE COUPLED PUMP-VERTICAL MOUNTING

PRINT:
07-2193

SUPERSEDES:
11-FEB-00

FRAME: 280JPV
BASIC TYPE: D

SHEET:
1 OF 1



ALL DIMENSIONS ARE IN INCHES AND MILLIMETERS

UNITS	C	P ⁵	U -.0005	AA	AB	AC	AF	AG	AH	AJ	AK -.005
INCH	29.00	12.44	1.2495	2.00 NPT	11.75	8.44	3.75	21.88	8.13	11.00	12.500
MM	737	316	31.737	2.00 NPT	298	214	95	556	206	279	317.50

UNITS	BB -.062	BD MAX	BF ^{2,3}	BV	EL -.002	EM -.0005	EN ^{2,3}	EP MIN
INCH	.313	14.00	5/8-11 UNC x .94	15.13	1.750	1.3750	1/2-13 UNC x 1.00	2.13
MM	7.95	356	5/8-11 UNC x .94	384	44.45	34.925	1/2-13 UNC x 1.00	54

UNITS	EQ ±.015	ER MIN	ES MIN	ET ±.020	SQ KEY
INCH	2.375	8.13	2.53	5.875	.250
MM	60.33	206	64	876.70	6.35

1: ALL ROUGH DIMENSIONS MAY VARY BY .25" DUE TO CASTING AND/OR FABRICATION VARIATIONS.
2: TAP SIZE AND BOLT PENETRATION ALLOWANCE.
3: ALL TAPPED HOLES ARE UNIFIED NATIONAL COARSE, RIGHT HAND THREAD.

4: STANDARD ASSEMBLY POSITION F-1 IS SHOWN. F-2 IS PROVIDED WHEN SPECIFIED. CONDUIT OPENINGS MAY BE LOCATED IN STEPS OF 90° REGARDLESS OF LOCATION. STANDARD AS SHOWN WITH CONDUIT OPENING DOWN.
5: LARGEST MOTOR WIDTH.
6: TOLERANCE UNITS ARE IN INCHES ONLY.

07-2193/A

Nidec Motor Corporation
St. Louis, Missouri

INFORMATION DISCLOSED ON THIS DOCUMENT IS CONSIDERED PROPRIETARY AND SHALL NOT BE REPRODUCED OR DISCLOSED WITHOUT WRITTEN CONSENT OF NIDEC MOTOR CORPORATION



ISSUED BY
R. KING
APPROVED BY
K. POTTER

IHP_DP_NMCA (MAR-2011) SOLIDEDGE