

EFFECTIVE:
06-MAR-18

DIMENSION PRINT

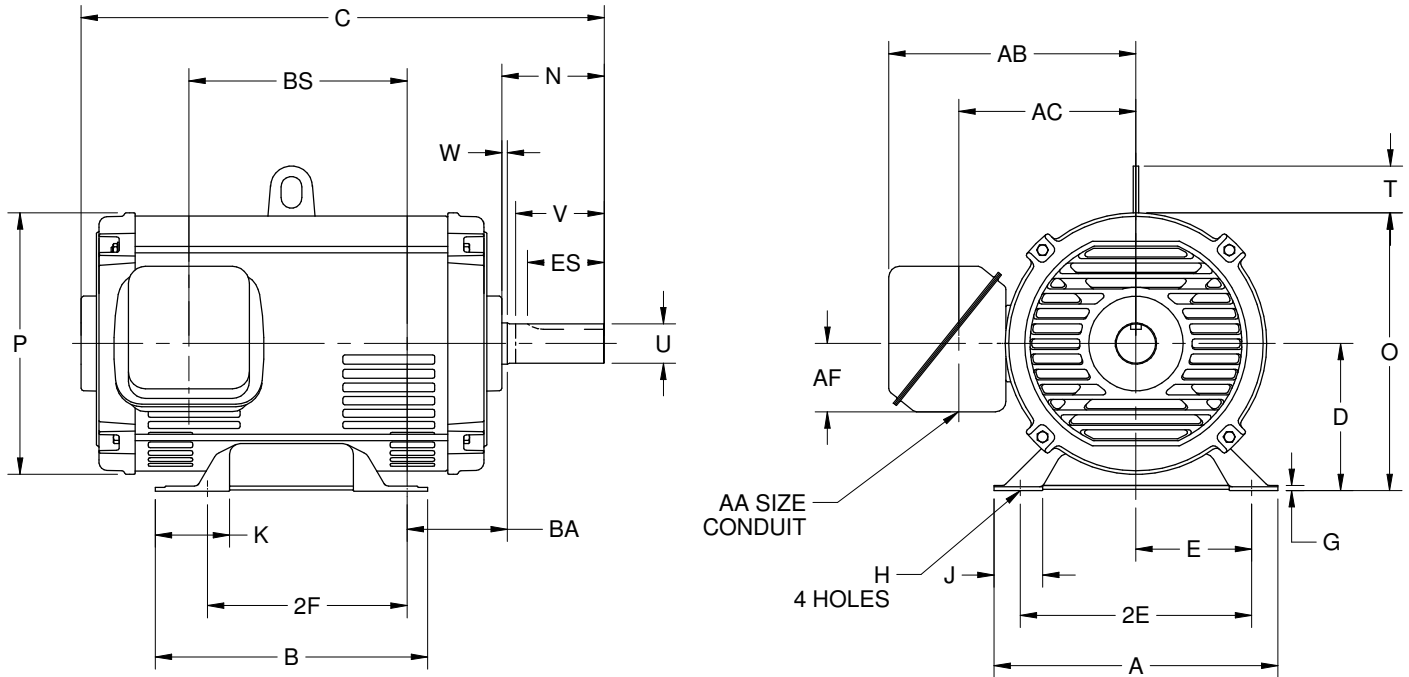
OPEN DRIP PROOF WITH OVERSIZED OUTLET BOX

PRINT:
07-2199-19

SUPERSEDES:
NEW

FRAME: 320T, TS
BASIC TYPE: D

SHEET:
1 OF 1



ALL DIMENSIONS ARE IN INCHES AND MILLIMETERS

UNITS	A	B	D -.06	E	2E ±.03	G	H +.05	J	K	O
IN	15.00	14.00	8.00	6.25	12.50	.25	.69	2.31	3.81	15.13
MM	381	356	203	159	318	6	18	59	97	384

UNITS	P ²	T	W	AA	AB	AC	AF	BA	BS	SQ KEY
IN	14.19	2.19	.50	3.00	14.75	10.50	3.38	5.25	11.50	.500
MM	360	56	13		267	267	86	133	292	12.70

FRAME	UNITS	C	2F ±.03	N	U -.001	V MIN	ES MIN
324T	IN	27.25	10.50	5.75	2.125	5.00	3.91
	MM	692	267	146	53.98	127	99
324TS	IN	25.75	10.50	4.25	1.875	3.50	3.91
	MM	645	267	108	47.63	89	99
326T	IN	27.25	12.00	5.75	2.125	5.00	3.91
	MM	692	305	146	53.98	127	99
326TS	IN	25.75	12.00	4.25	1.875	3.50	2.06
	MM	645	305	108	47.63	89	52

1. DIMENSIONS MAY VARY BY .25" DUE TO CASTING AND/OR FABRICATION VARIATIONS.
2. LARGEST MOTOR WIDTH.
3. TOLERANCES SHOWN ARE IN INCHES ONLY.

4. STANDARD ASSEMBLY POSITION F-1 IS SHOWN. F-2 IS PROVIDED WHEN SPECIFIED. CONDUIT OPENINGS MAY BE LOCATED IN STEPS OF 90° REGARDLESS OF LOCATION. STANDARD AS SHOWN WITH CONDUIT OPENING DOWN.
5. FRAME REFERENCE: 16.750/324/326

Nidec Motor Corporation
St. Louis, Missouri

INFORMATION DISCLOSED ON THIS DOCUMENT
IS CONSIDERED PROPRIETARY AND SHALL NOT BE
REPRODUCED OR DISCLOSED WITHOUT WRITTEN
CONSENT OF NIDEC MOTOR CORPORATION



ISSUED BY
D. CISNEROS
APPROVED BY
T. PALLETT

IHP_DP_NMCA (MAR-2011) SOLIDEDGE