

EFFECTIVE:  
30-MAR-12

SUPERSEDES:  
12-NOV-02

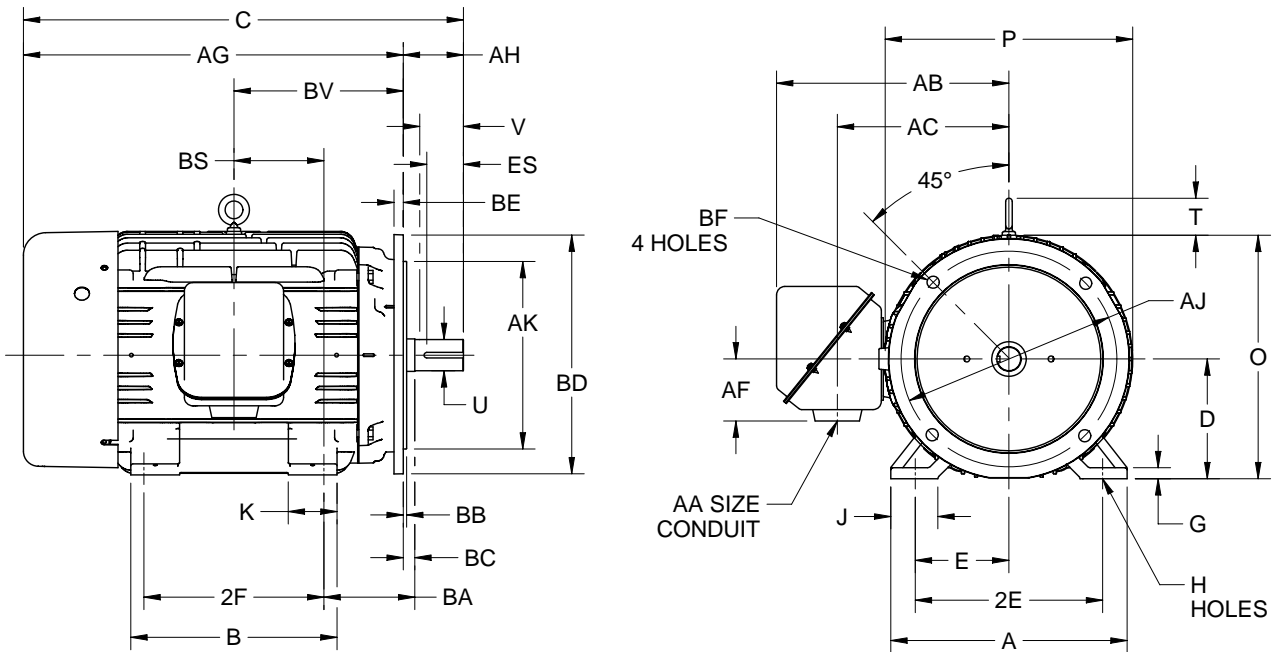
# HORIZONTAL MOTORS

AUTOMOTIVE DUTY WITH NEMA "D" BRACKET

FRAME: 360UD  
BASIC TYPE: JAD, JDE

PRINT:  
07-2254

SHEET:  
1 OF 1



ALL DIMENSIONS ARE IN INCHES AND MILLIMETERS

	A	B	C	D -.06	E	2E ±.03	G	H +.05	J
IN	17.13	14.50	33.06	9.00	7.00	14.00	.81	.66	3.25
MM	435	368	840	229	178	356	21	17	83

	K	O	P <sup>2</sup>	T	U -.001	V MIN	AA	AB	AC
IN	3.25	18.13	18.69	2.50	2.125	5.62	2 1/2 NPT	16.38	12.19
MM	83	461	475	64	53.98	143		416	310

	AF	AG	AH	AJ	AK -.005	BA	BB MIN	BC	BD MAX
IN	4.19	26.69	6.38	16.000	14.000	5.88	.19	0	18.00
MM	106	678	162	406.40	355.60	149	5	0	457

	BF	BS	BV	ES MIN	SQ. KEY
IN	.81	6.13	12.06	4.28	.500
MM	21	156	306	109	12.70

	FRAME	2F ±.03
IN	364UD	11.25
MM		286
IN	365UD	12.25
MM		311

TOLERANCES	
FACE RUNOUT	.007 T.I.R.
PERMISSIBLE ECCENTRICITY OF MOUNTING RABBET	.007 T.I.R.
PERMISSIBLE SHAFT RUNOUT	.003 T.I.R.

1. DIMENSIONS MAY VARY .25" DUE TO CASTING AND/OR FABRICATION VARIATIONS.
2. LARGEST MOTOR WIDTH
3. TOLERANCES SHOWN ARE IN INCHES ONLY.

4. CONDUIT BOX MAY BE LOCATED ON EITHER SIDE OF MOTOR. CONDUIT OPENINGS MAY BE LOCATED IN STEPS OF 90 DEGREES REGARDLESS OF LOCATION. STANDARD AS SHOWN WITH CONDUIT OPENING DOWN.

07-2254/B

**Nidec Motor Corporation**  
St. Louis, Missouri

INFORMATION DISCLOSED ON THIS DOCUMENT IS CONSIDERED PROPRIETARY AND SHALL NOT BE REPRODUCED OR DISCLOSED WITHOUT WRITTEN CONSENT OF NIDEC MOTOR CORPORATION



ISSUED BY  
**K. FRIEDMAN**  
APPROVED BY  
**J. HAGENE**

IHP\_DP\_NMCA (MAR-2011) SOLIDEDGE