

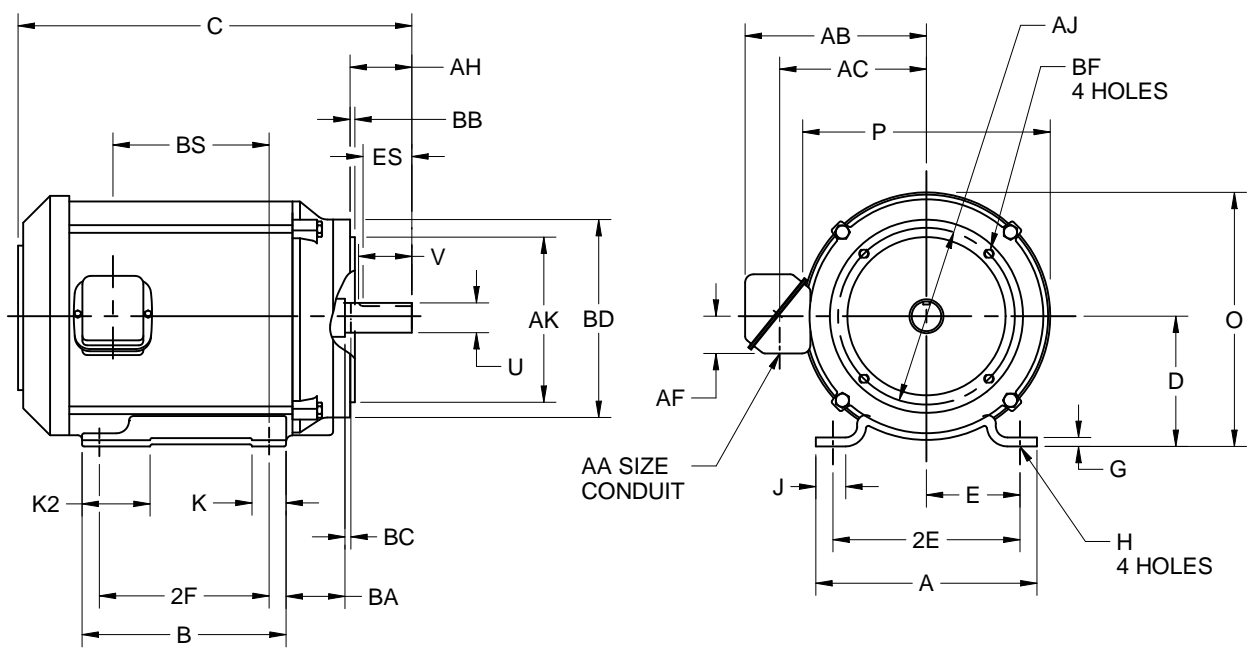
EFFECTIVE:
02-DEC-13

DIMENSION PRINT
TEFC - 6.75" FRAME LENGTH
FRAME: 140TC
BASIC TYPE:CT, CTE, CTI, FCT

PRINT:
07-2270-01

SUPERSEDES:
12-OCT-01

SHEET:
1 OF 1



ALL DIMENSIONS ARE IN INCHES AND MILLIMETERS

UNITS	A	B	C	D -.06	E	2E ±.03	G	H +.05	J	K	K2	O
IN	6.50	6.00	12.88	3.50	2.75	5.50	.13	.34	1.00	.94	1.88	7.38
MM	165	152	327	89	70	140	3	9	25	24	48	187

UNITS	P ²	U -.0005	V MIN	AA	AB	AC	AF	AH	AJ	AK -.003	BA	BB -.06
IN	7.75	.8750	2.00	3/4 NPT	6.13	4.66	1.59	2.13	5.875	4.500	2.75	.16
MM	197	22.225	51		156	118	40	54	149.23	114.30	70	4

UNITS	BC	BD	BF ⁵	BS	ES MIN	SQ KEY
IN	.13	6.50	3/8-16 x .56	4.63	1.41	.188
MM	3	156		118	35	4.78

FRAME	UNITS	2F ±.03
143TC	IN	4.00
	MM	102
145TC	IN	5.00
	MM	127

1. ALLROUGH CASTING DIMENSIONS MAY VARY BY .25" DUE TO CASTING AND/OR FABRICATION VARIATIONS.
2. LARGEST MOTOR WIDTH.
3. CONDUIT BOX MAY BE LOCATED ON EITHER SIDE OF MOTOR. CONDUIT OPENINGS MAY BE LOCATED IN STEPS OF 90 DEGREES REGARDLESS OF LOCATION. STANDARD AS SHOWN WITH CONDUIT OPENING DOWN.

4. TOLERANCES SHOWN ARE IN INCHES ONLY.
5. TAP SIZE AND BOLT PENETRATION ALLOWANCE.
6. ALL TAPPED HOLES ARE UNIFIED NATIONAL COARSE, RIGHT HAND THREAD.

07-2270/A

Nidec Motor Corporation
St. Louis, Missouri

INFORMATION DISCLOSED ON THIS DOCUMENT IS CONSIDERED PROPRIETARY AND SHALL NOT BE REPRODUCED OR DISCLOSED WITHOUT WRITTEN CONSENT OF NIDEC MOTOR CORPORATION



ISSUED BY
R. KING
APPROVED BY
J. HAGENE

IHP_DP_NMCA (MAR-2011) SOLIDEDGE