

EFFECTIVE:  
**07-MAY-18**

# DIMENSION PRINT

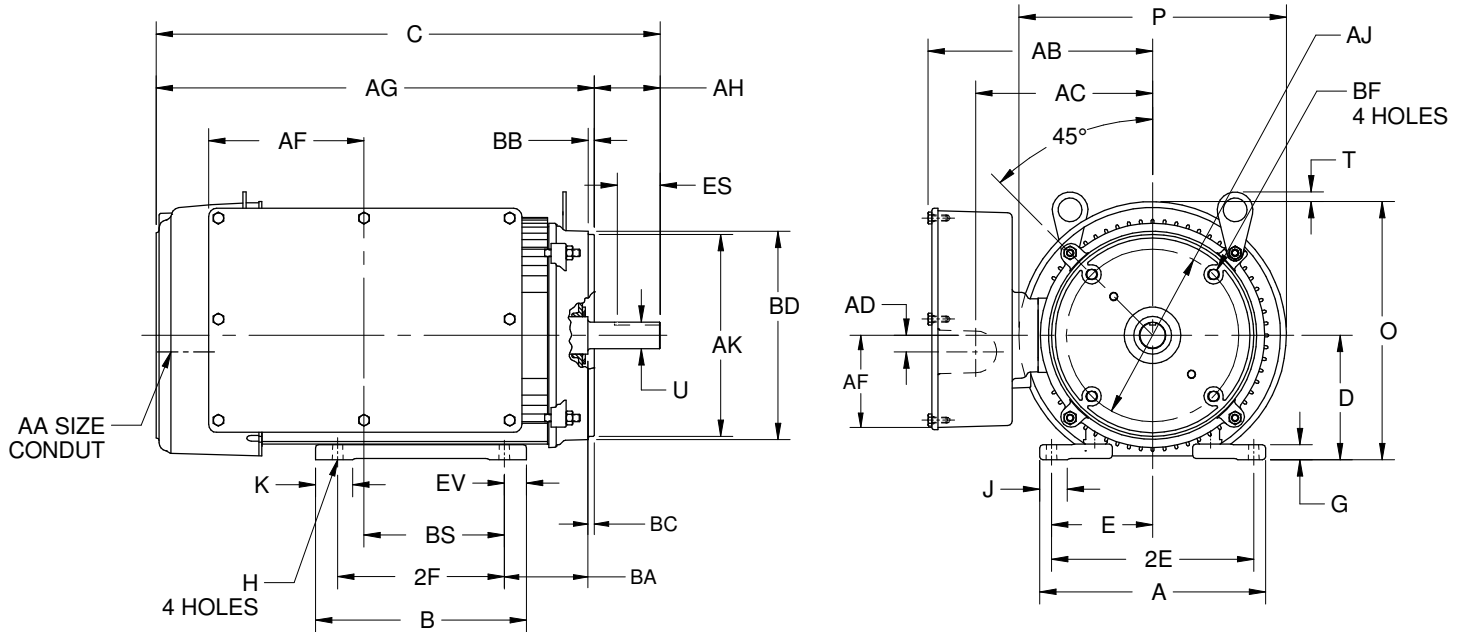
## TEFC FARM DUTY - SINGLE PHASE

PRINT:  
**07-2363-01**

SUPERSEDES:  
**01-MAY-18**

FRAME: 215TCYZ  
BASIC TYPE: TMQ

SHEET:  
**1 OF 1**



ALL DIMENSIONS ARE IN INCHES AND MILLIMETERS

UNITS	A	B	C	D -.06	E	2E ±.03	2F ±.03	G	H +.05	J	K
IN	9.50	8.88	21.00	5.25	4.25	8.50	7.00	.63	.41	1.16	1.59
MM	541	226	533	133	108	216	178	16	10	29	40

UNITS	O	P <sup>2</sup>	U -.0005	AA	AB	AC	AD	AF	AG	AH	AJ
IN	10.84	11.25	1.1250	1 NPT	9.44	7.44	.69	6.50	18.25	2.75	7.250
MM	275	286	28.575		240	189	18	165	464	70	184.15

UNITS	AK -.003	BA	BB MIN	BC	BD MAX	BF <sup>3</sup>	BS	ES MIN	EV	SQ KEY
IN	8.500	3.50	.25	.25	9.00	1/2-13 X .75	5.84	1.78	.94	.250
MM	215.90	89	6	6	229		148	6	24	6.35

1. ALL ROUGH DIMENSIONS MAY VARY BY .25" DUE TO CASTING AND/OR FABRICATION VARIATIONS.
2. LARGEST MOTOR WIDTH.
3. TAP SIZE AND BOLT PENETRATION ALLOWANCE.
4. ALL TAPPED HOLES ARE UNIFIED NATIONAL COARSE, RIGHT HAND THREAD.
5. TOLERANCES SHOWN ARE IN INCHES ONLY.
6. FRAME REFERENCE: 12.125/215

TOLERANCES	
FACE RUNOUT	.004 T.I.R.
PERMISSIBLE ECCENTRICITY OF MOUNTING RABBET	.004 T.I.R.
PERMISSIBLE SHAFT RUNOUT	.002 T.I.R.

07-2363/A

**Nidec Motor Corporation**  
St. Louis, Missouri

INFORMATION DISCLOSED ON THIS DOCUMENT  
IS CONSIDERED PROPRIETARY AND SHALL NOT BE  
REPRODUCED OR DISCLOSED WITHOUT WRITTEN  
CONSENT OF NIDEC MOTOR CORPORATION



ISSUED BY  
**F. RAMIREZ**  
APPROVED BY  
**T. PALLETT**

IHP\_DP\_NMCA (MAR-2011) SOLIDEDGE