

EFFECTIVE:
11-MAY-11

HORIZONTAL MOTORS

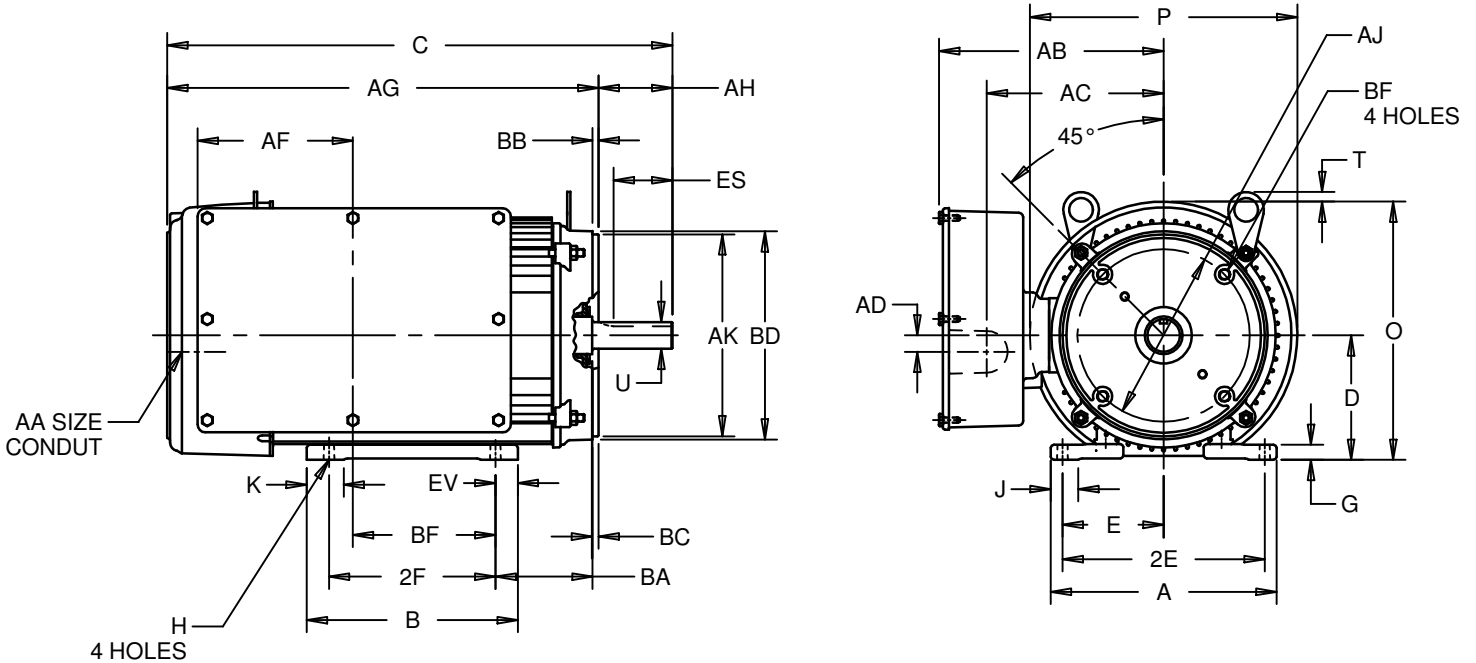
TEFC FARM DUTY - SINGLE PHASE

PRINT:
07-2363

SUPERSEDES:
27-NOV-01

FRAME: 215TC
BASIC TYPE: TMQ

SHEET:
1 OF 1



ALL DIMENSIONS ARE IN INCHES AND MILLIMETERS

UNITS	A	B	C	D	E	2E	2F	G	H	J	K
IN	9.50	8.88	21.25	-.06	4.25	±.03	±.03	.63	+.05	1.16	1.59
MM	241	226	540	133	108	8.50	7.00	16	10	29	40
UNITS	O	P ²	U	AA	AB	AC	AD	AF	AG	AH	AJ
IN	10.84	11.25	-.0005	1 NPT	9.44	7.44	.69	6.50	18.25	3.00	7.250
MM	275	286	34.925		240	189	18	165	464	76	184.15
UNITS	AK	BA	BB	BC	BD	BF ³	BS	ES	EV	SQ	
IN	-.003	4.25	MIN	.25	MAX	1/2 -13 X .75	5.84	MIN	.94	KEY	
MM	215.90	108	6	6	229		148	61	24	7.95	

1. ALL ROUGH DIMENSIONS MAY VARY BY .25" DUE TO CASTING AND/OR FABRICATION VARIATIONS.
2. LARGEST MOTOR WIDTH.
3. TAP SIZE AND BOLT PENETRATION ALLOWANCE.
4. ALL TAPPED HOLES ARE UNIFIED NATIONAL COARSE, RINGT HAND THREAD.
5. TOLERANCES SHOWN ARE IN INCHES ONLY.
6. FRAME REFERENCE: 12.125/215

TOLERANCES	
FACE RUNOUT	.004 T.I.R.
PERMISSIBLE ECCENTRICITY OF MOUNTING RABBET	.004 T.I.R.
PERMISSIBLE SHAFT RUNOUT	.002 T.I.R.

07-2363/A

Nidec Motor Corporation
St. Louis, Missouri

INFORMATION DISCLOSED ON THIS DOCUMENT IS CONSIDERED PROPRIETARY AND SHALL NOT BE REPRODUCED OR DISCLOSED WITHOUT WRITTEN CONSENT OF NIDEC MOTOR CORPORATION



ISSUED BY
A. HINGANKAR
APPROVED BY
R. KING

IHP_DP_NMCA (MAR-2011) SOLIDEDGE