

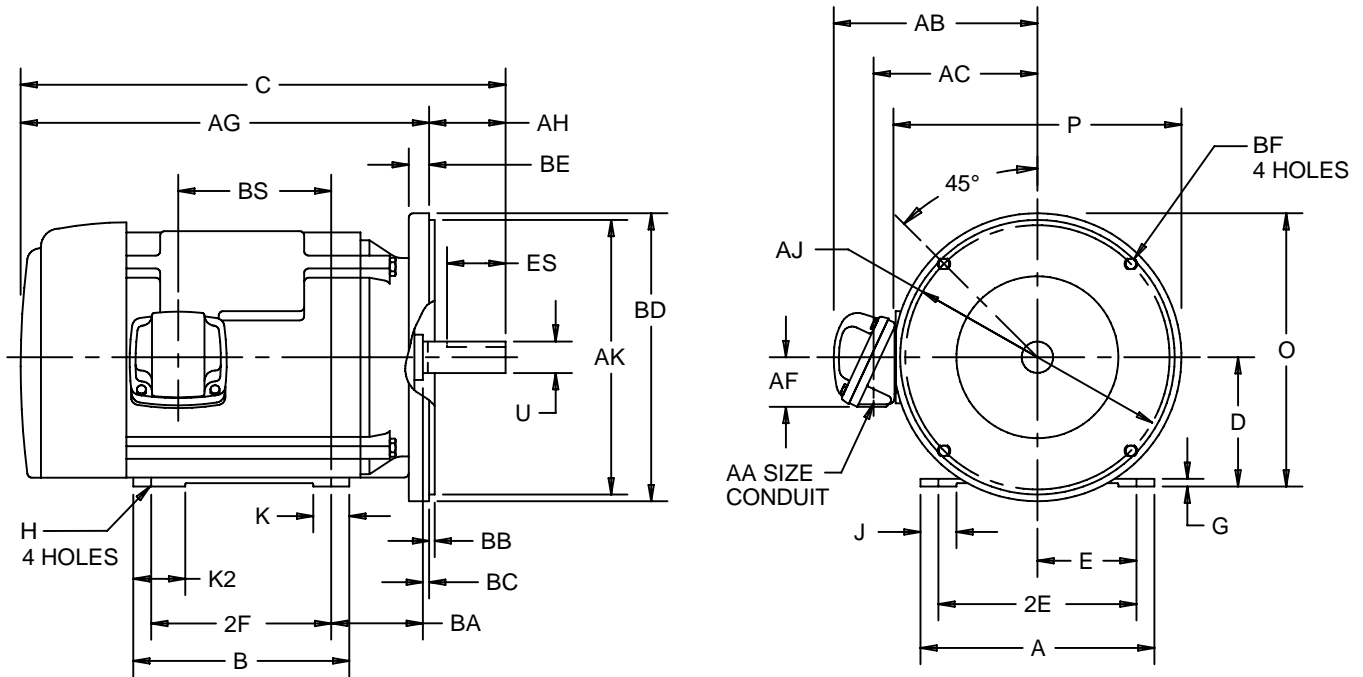
EFFECTIVE:
04-JUN-13

SUPERSEDES:
10-MAY-11

DIMENSION PRINT
WITH NEMA "D" BRACKET
FRAME: 143, 145TD
BASIC TYPE: TC

PRINT:
07-2478

SHEET:
1 OF 1



ALL DIMENSIONS ARE IN INCHES AND MILLIMETERS

UNITS	A	B	C	D	E	2E	G	H	J	K	K2
IN	6.50	6.00	14.59	-.06	2.75	±.03	.16	.34	.94	.94	1.94
MM	165	152	371	89	70	5.50	4	9	24	24	49

UNITS	O	P ²	U	AA	AB	AC	AF	AG	AH	AJ	AK
IN	7.56	8.00	.8750	3/4 NPT	7.00	5.38	1.75	12.34	2.25	10.000	9.000
MM	192	203	22.225		178	137	44	313	57	254.00	228.60

UNITS	BA	BB	BC ⁵	BD	BE	BF	BS	ES	SQ
IN	2.75	-.25	1.13	MAX	.91	.53	4.09	MIN	KEY
MM	70	6	29	279	23	13	104	36	4.78

FRAME	UNITS	2F
143TD	IN	±.03
	MM	4.00
145TD	IN	5.00
	MM	127

1. ALL ROUGH DIMENSIONS MAY VARY BY .25" DUE TO CASTING AND/OR FABRICATION VARIATIONS.
2. LARGEST MOTOR WIDTH.
3. CONDUIT BOX MAY BE LOCATED ON EITHER SIDE. CONDUIT OPENINGS MAY BE LOCATED IN STEPS OF 90 DEGREES REGARDLESS OF LOCATION. STANDARD AS SHOWN WITH CONDUIT OPENING DOWN.
4. TOLERANCES SHOWN ARE IN INCHES ONLY.
5. NON-NEMA "BC" DIMENSION.

TOLERANCES	
FACE RUNOUT	.004 T.I.R.
PERMISSIBLE ECCENTRICITY OF MOUNTING RABBET	.004 T.I.R.
PERMISSIBLE SHAFT RUNOUT	.002 T.I.R.

07-2478/C

Nidec Motor Corporation
St. Louis, Missouri

INFORMATION DISCLOSED ON THIS DOCUMENT IS CONSIDERED PROPRIETARY AND SHALL NOT BE REPRODUCED OR DISCLOSED WITHOUT WRITTEN CONSENT OF NIDEC MOTOR CORPORATION



ISSUED BY
R. KING
APPROVED BY
J. O'BRIEN

IHP_DP_NMCA (MAR-2011) SOLIDEDGE