

EFFECTIVE:  
**02-AUG-16**

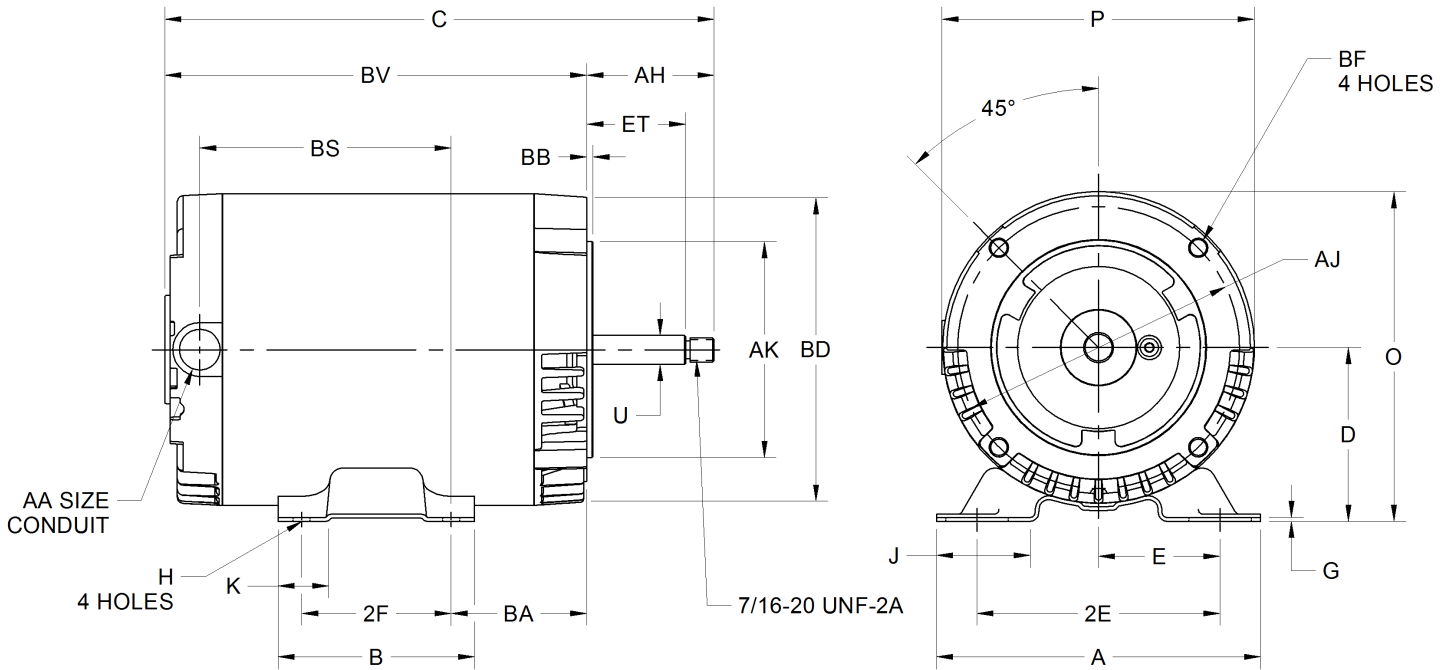
**DIMENSION PRINT**  
OPEN

PRINT:  
**07-2512**

SUPERSEDES:  
**11-APR-12**

FRAME: 56C  
BASIC TYPE: D

SHEET:  
**1 OF 1**



ALL DIMENSIONS ARE IN INCHES AND MILLIMETERS

UNITS	A	B	C	D -.03	E	2E	2F	G	H	J	K
IN	6.50	4.00	11.88	3.50	2.44	4.875	3.00	.104	.344 X 1.25	2.00	1.00
MM	165	102	302	89	62	123.83	76	2.64		51	25

UNITS	O	P <sup>4</sup>	U -.0005	AA	AH	AJ	AK -.003	BA	BB MIN	BD MAX	BF <sup>3</sup>
IN	6.75	6.50	.6250	1/2 NPT	2.56	5.875	4.500	2.56	.13	6.50	3/8-16 X .75
MM	171	165	15.875		65	149.23	114.30	65	3	165	

UNITS	BS	BV	ET ±.015
IN	6.00	9.30	1.875
MM	152	236	47.62

TOLERANCES	
FACE RUNOUT	.004 T.I.R.
PERMISSIBLE ECCENTRICITY OF MOUNTING RABBET	.004 T.I.R.
PERMISSIBLE SHAFT RUNOUT	.002 T.I.R.

1. DIMENSIONS MAY VARY .25" DUE TO CASTING AND/OR FABRICATION VARIATIONS.
2. ALL TAPPED HOLES ARE UNIFIED NATIONAL COARSE, RIGHT HAND THREAD.
3. TAP SIZE AND BOLT PENETRATION ALLOWANCE.

4. LARGEST MOTOR WIDTH.
5. TOLERANCES ARE ALL IN INCHES.
6. FRAME REFERENCE: 7.000/56

07-2512/B

**Nidec Motor Corporation**  
St. Louis, Missouri

INFORMATION DISCLOSED ON THIS DOCUMENT IS CONSIDERED PROPRIETARY AND SHALL NOT BE REPRODUCED OR DISCLOSED WITHOUT WRITTEN CONSENT OF NIDEC MOTOR CORPORATION



ISSUED BY  
**R. MARTINEZ**  
APPROVED BY  
**P. ORTEGA**

IHP\_DP\_NMCA (MAR-2011) SOLIDEDGE