

EFFECTIVE:  
27-MAY-11

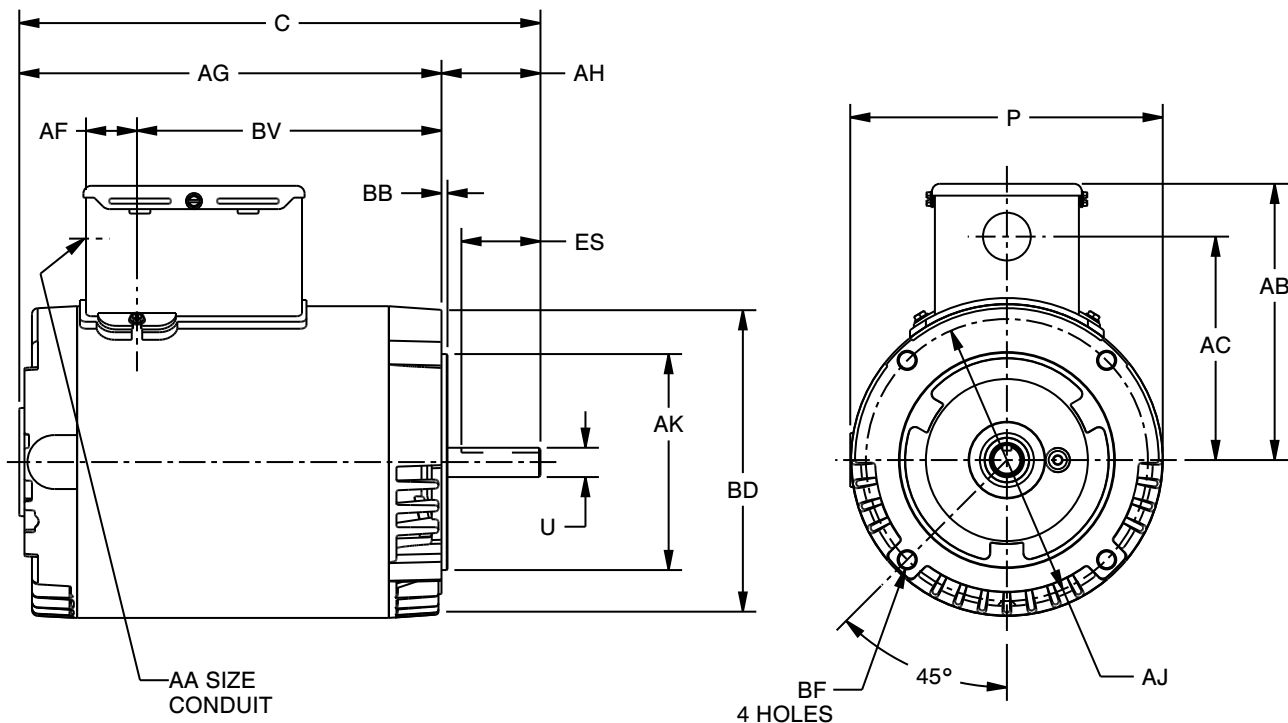
# HORIZONTAL MOTORS

PRINT:  
07-2539

SUPERSEDES:  
24-FEB-03

OPEN  
FRAME: 56C  
BASIC TYPE: DF

SHEET:  
1 OF 1



DIMENSIONS ARE IN INCHES AND MILLIMETERS

	C	P <sup>3</sup>	U -.0005	AA	AB	AC	AF	AG	AH
IN	11.86	6.50	.6250	.875	5.75	4.64	1.06	9.80	2.06
MM	301	165	15.875		146	118	27	249	52
	AJ	AK -.003	BB MIN	BD MAX	BF <sup>4</sup>	BV	ES MIN	SQ KEY	
IN	5.875	4.500	.13	6.50	3/8-16 X .75	7.34	1.44	.188	
MM	149.23	114.30	3	165		186	37	4.78	

TOLERANCES	
FACE RUNOUT	.004 T.I.R.
PERMISSIBLE ECCENTRICITY OF MOUNTING RABBET	.004 T.I.R.
PERMISSIBLE SHAFT RUNOUT	.002 T.I.R.

1. ALL ROUGH DIMENSIONS MAY VARY .25" DUE TO CASTING AND/OR FABRICATION VARIATIONS.  
2. ALL TAPPED HOLES ARE UNIFIED NATIONAL COARSE, RIGHT HAND THREAD.  
3. LARGEST MOTOR WIDTH.

4. TAP SIZE AND BOLT PENETRATION ALLOWANCE.  
5. TOLERANCES SHOWN ARE IN INCHES ONLY.  
6. FRAME REFERENCE: 7.500/56

07-2539/A

**Nidec Motor Corporation**  
St. Louis, Missouri

INFORMATION DISCLOSED ON THIS DOCUMENT IS CONSIDERED PROPRIETARY AND SHALL NOT BE REPRODUCED OR DISCLOSED WITHOUT WRITTEN CONSENT OF NIDEC MOTOR CORPORATION



ISSUED BY  
**S. KULKARNI**  
APPROVED BY  
**R. KING**

IHP\_DP\_NMCA (MAR-2011) PROENGINEER