

EFFECTIVE:  
**23-MAY-11**

# HORIZONTAL MOTORS

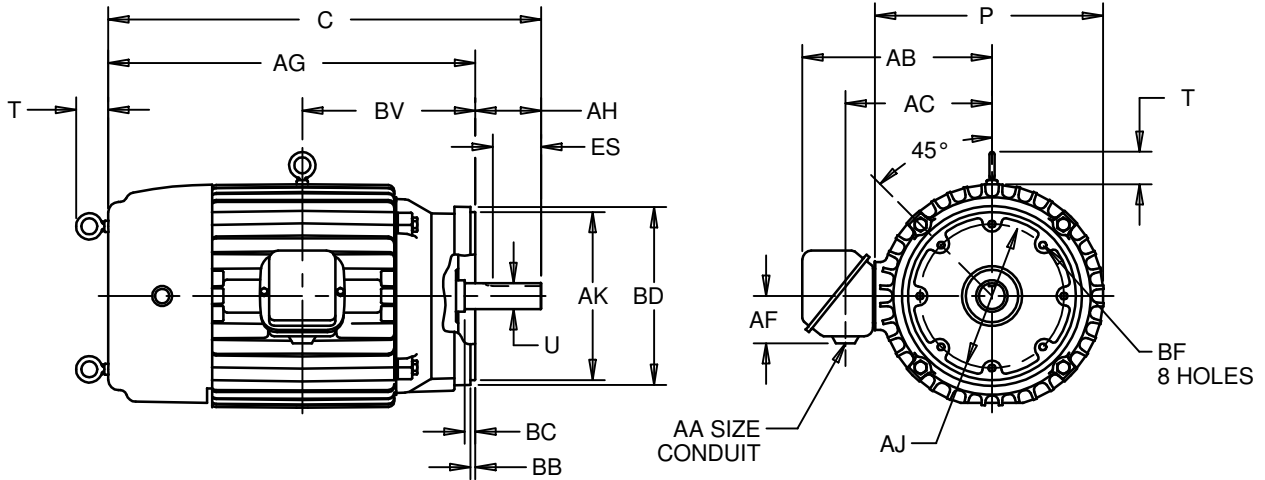
## AUTOMOTIVE DUTY WITH NEMA "C" BRACKET

PRINT:  
**07-2560**

SUPERSEDES:  
**15-FEB-05**

FRAME: 404, 405USC  
BASIC TYPE: JADF, JDEF

SHEET:  
**1 OF 1**



ALL DIMENSIONS ARE IN INCHES AND MILLIMETERS

UNITS	C	P <sup>4</sup>	T	U	AA	AB	AC	AF	AG	AH
IN	35.25	20.88	2.94	2.125	2 1/2 NPT	17.75	13.44	4.19	31.25	4.00
MM	895	530	75	53.98		451	341	106	794	102

UNITS	AJ	AK	BB	BC	BD	BF <sup>2</sup>	BV	ES	SQ
IN	11.000	12.500	.25	.25	15.50	5/8-11 X .94	13.75	2.75	.500
MM	279.40	317.50	6	6	394		349	70	12.70

- 1: ALL ROUGH DIMENSIONS MAY VARY BY .25" DUE TO CASTING AND/OR FABRICATION VARIATIONS.
- 2: TAP SIZE AND BOLT PENETRATION ALLOWANCE.
- 3: ALL TAPPED HOLES ARE UNIFIED NATIONAL COARSE, RIGHT HAND THREAD.
- 4: LARGEST MOTOR WIDTH.
- 5: CONDUIT BOX MAY BE LOCATED ON EITHER SIDE OF MOTOR. CONDUIT OPENINGS MAY BE LOCATED IN STEPS OF 90° REGARDLESS OF LOCATION. STANDARD AS SHOWN WITH CONDUIT OPENING DOWN.
- 6: TOLERANCES SHOWN ARE IN INCHES ONLY.
- 7: THIS UNIT MAY HAVE HORIZONTAL LIFTING, VERTICAL LIFTING OR BOTH.

TOLERANCES	
FACE RUNOUT	.007 T.I.R.
PERMISSIBLE ECCENTRICITY OF MOUNTING RABBET	.007 T.I.R.
PERMISSIBLE SHAFT RUNOUT	.003 T.I.R.

07-2560/B

**Nidec Motor Corporation**  
St. Louis, Missouri

INFORMATION DISCLOSED ON THIS DOCUMENT IS CONSIDERED PROPRIETARY AND SHALL NOT BE REPRODUCED OR DISCLOSED WITHOUT WRITTEN CONSENT OF NIDEC MOTOR CORPORATION



ISSUED BY  
**A. HINGANKAR**  
APPROVED BY  
**R. KING**

IHP\_DP\_NMCA (MAR-2011) SOLIDEDGE