

EFFECTIVE:
24-MAY-11

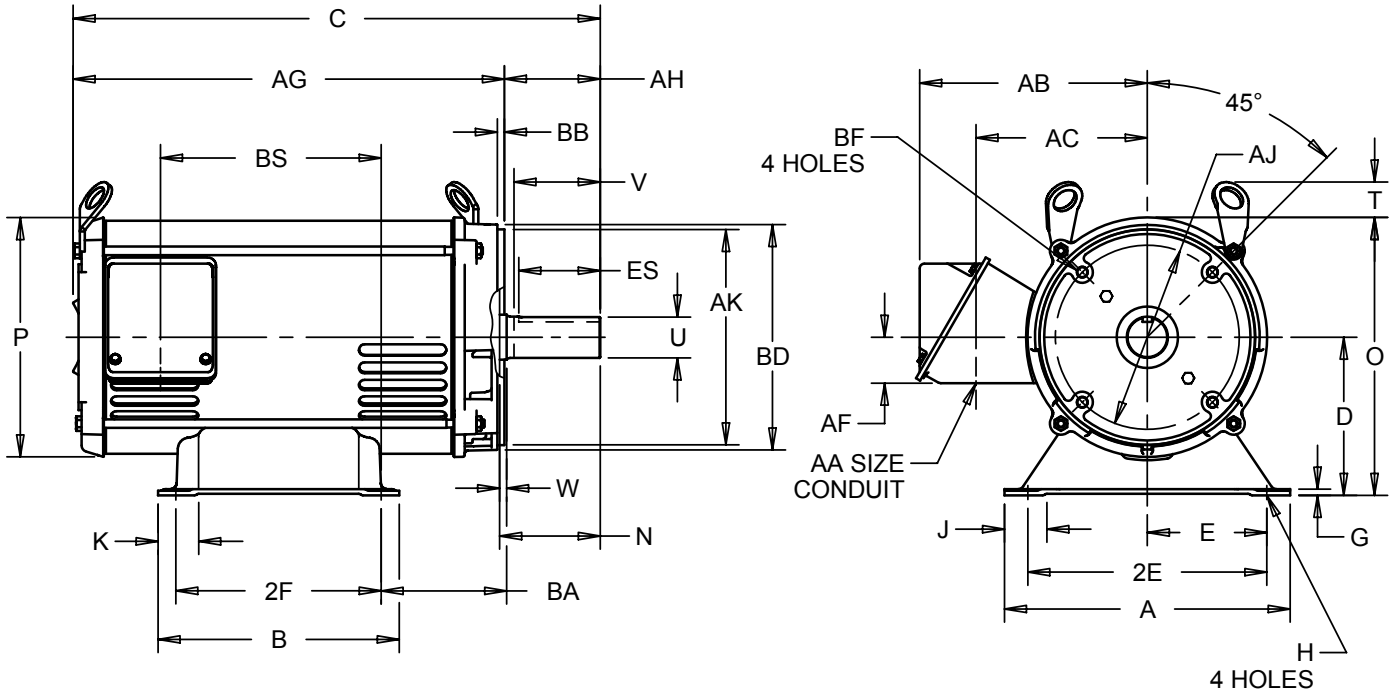
HORIZONTAL MOTORS
ODP - WITH "C" BRACKET
FRAME: A254TC
BASIC TYPE: D, DE

PRINT:
07-2572

SUPERSEDES:
24-FEB-03

SHEET:
1 OF 1

STANDARD F-1 ASSEMBLY



ALL DIMENSIONS ARE IN INCHES AND MILLIMETERS

UNITS	A	B	C	D	E	2E	2F	G	H	J	K	N
IN	11.25	9.50	20.72	6.25	5.00	10.00	8.25	.19	.56	1.44	1.38	3.72
MM	286	241	526	159	127	254	210	5	14	37	35	94

UNITS	O	P ²	T	U	V	W	AA	AB	AC	AF	AG	AH
IN	11.00	9.44	1.50	1.625	3.72	.125	1.25	8.81	6.78	1.81	16.88	3.75
MM	279	240	38	41.28	94	3.18		224	172	46	429	95

UNITS	AJ	AK	BA	BB	BD	BF ³	BS	SQ
IN	7.250	8.500	4.75	±.031	10.00		9.18	.375
MM	184.15	215.90	121	7.14	254	1/2-13 X .75	233	9.53

- 1: ALL ROUGH DIMENSIONS MAY VARY BY .25" DUE TO CASTING AND/OR FABRICATION VARIATIONS.
- 2: LARGEST MOTOR WIDTH.
- 3: TAP SIZE AND BOLT PENETRATION ALLOWANCE.
- 4: ALL TAPPED HOLES ARE UNIFIED NATIONAL COARSE, RIGHT HAND THREAD.
- 5: CONDUIT BOX MAY BE LOCATED ON EITHER SIDE AND CONDUIT OPENING MAY BE LOCATED IN STEPS OF 90° REGARDLESS OF LOCATION. STANDARD AS SHOWN WITH CONDUIT OPENING DOWN.
- 6: TOLERANCES SHOWN ARE IN INCHES ONLY.
- 7: FRAME REFERENCE: 254/14.024

TOLERANCES	
FACE RUNOUT	.004 T.I.R.
PERMISSIBLE ECCENTRICITY OF MOUNTING RABBET	.004 T.I.R.
PERMISSIBLE SHAFT RUNOUT	.002 T.I.R.

07-2572/A

Nidec Motor Corporation
St. Louis, Missouri

INFORMATION DISCLOSED ON THIS DOCUMENT IS CONSIDERED PROPRIETARY AND SHALL NOT BE REPRODUCED OR DISCLOSED WITHOUT WRITTEN CONSENT OF NIDEC MOTOR CORPORATION



ISSUED BY
P. INGALE
APPROVED BY
R. KING

IHP_DP_NMCA (MAR-2011) SOLIDEDGE