

EFFECTIVE:
01-JUN-11

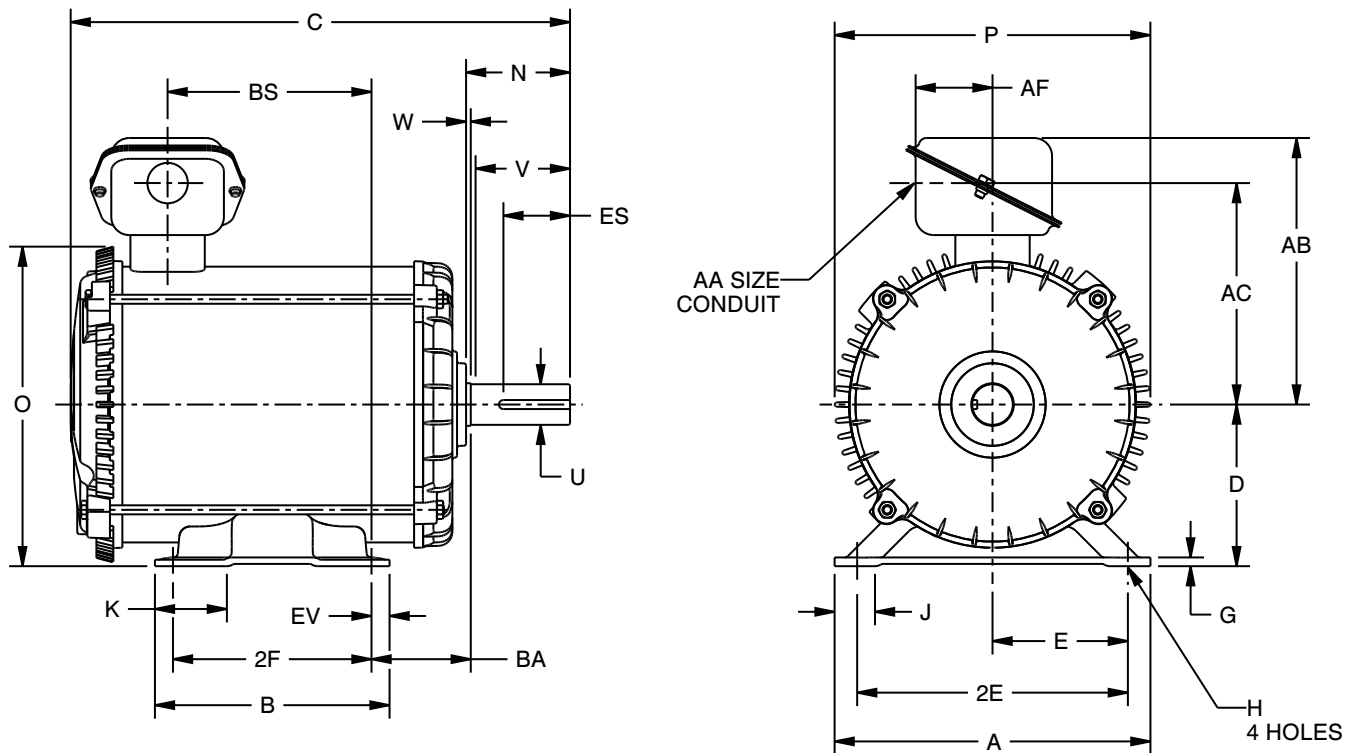
HORIZONTAL MOTORS

PRINT:
07-2586

SUPERSEDES:
30-APR-03

TEAO
FRAME: 182, 184T
BASIC TYPE: FSN

SHEET:
1 OF 1



DIMENSIONS ARE IN INCHES AND MILLIMETERS

	A	B	D -.06	E	2E ±.03	G	H +.05	J
IN	8.75	6.50	4.50	3.75	7.50	.18	.44	1.13
MM	222	165	114	95	191	5	11	29

	K	N	O	P ²	U -.0005	V MIN	W	AA
IN	2.00	2.88	8.88	8.75	1.1250	2.56	.13	.75
MM	51	73	226	222	28.575	65	3	

	AB	AC	AF	BA ±.09	ES MIN	EV	SQ. KEY
IN	7.44	6.19	2.13	2.75	1.78	.50	.250
MM	189	157	54	70	45	13	6.35

	FRAME	C	2F ±.03	BS
IN	182T	12.88	4.50	4.69
		327	114	119
MM	184T	13.88	5.50	5.69
		353	140	145

- 1: ALL ROUGH DIMENSIONS MAY VARY .25" DUE TO CASTING AND/OR FABRICATION VARIATIONS.
- 2: LARGEST MOTOR WIDTH.
- 3: CONDUIT OPENING MAY BE LOCATED IN STEPS OF 90°. STANDARD AS SHOWN.
- 4: TOLERANCES SHOWN ARE IN INCHES ONLY.
- 5: FRAME REFERENCE: 7.250/182/8.250/184

07-2586/A

Nidec Motor Corporation
St. Louis, Missouri

INFORMATION DISCLOSED ON THIS DOCUMENT IS CONSIDERED PROPRIETARY AND SHALL NOT BE REPRODUCED OR DISCLOSED WITHOUT WRITTEN CONSENT OF NIDEC MOTOR CORPORATION



ISSUED BY
S. KULKARNI
APPROVED BY
R. KING

IHP_DP_NMCA (MAR-2011) PROENGINEER