

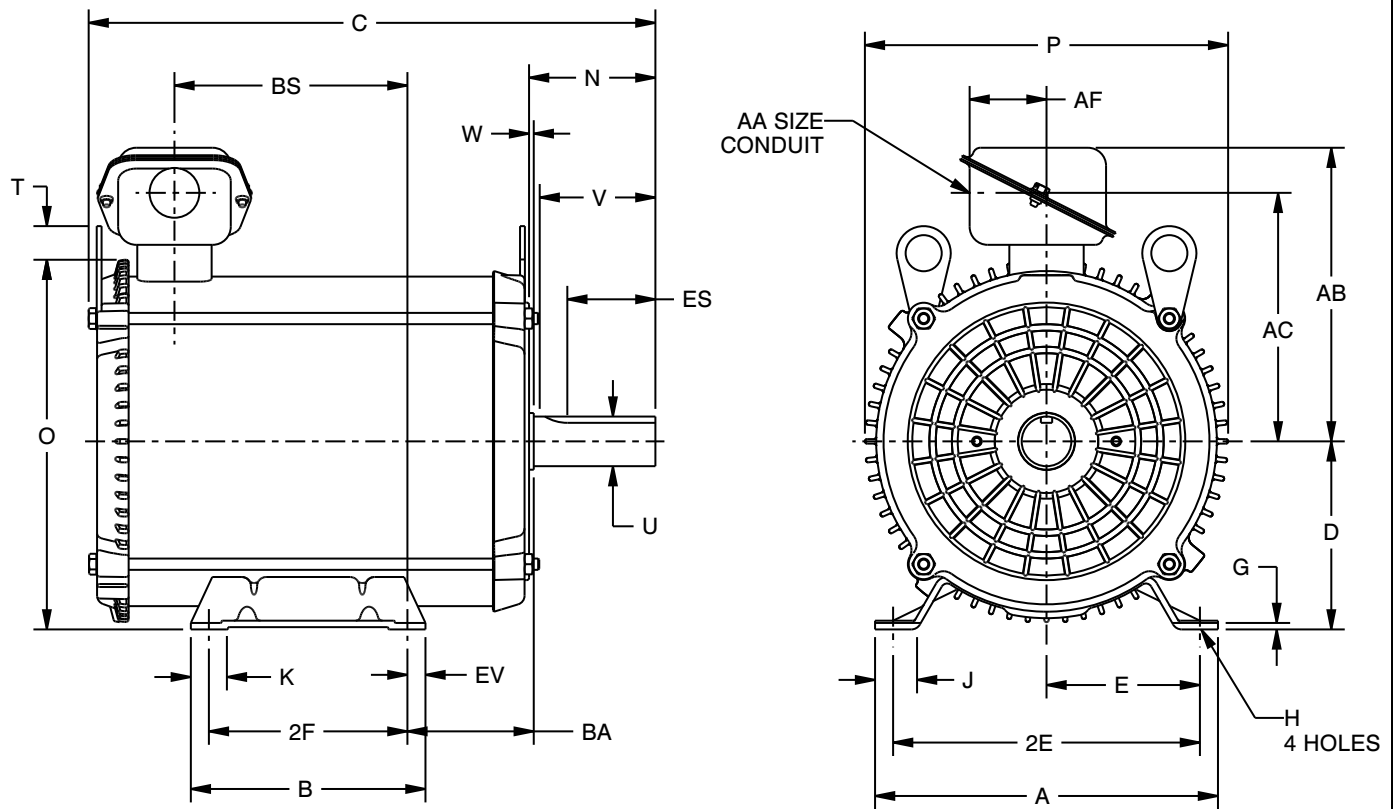
EFFECTIVE:
13-JUL-11
 SUPERSEDES:
30-APR-03

HORIZONTAL MOTORS

TEAO
 FRAME: 213, 215T
 BASIC TYPE: FSN

PRINT:
07-2587
 SHEET:
1 OF 1

F-0 ASSEMBLY



DIMENSIONS ARE IN INCHES AND MILLIMETERS

	A	C	D -.06	E	2E ±.03	G	H +.05	J	K
IN	9.50	15.75	5.25	4.25	8.50	.19	.44	1.20	1.19
MM	241	400	133	108	216	5	11	30	30

	N	O	P ²	T	U -.0005	V MIN	W	AA	AB
IN	3.50	10.25	10.06	.94	1.3750	3.13	.13	1.00	8.13
MM	89	260	256	24	34.925	80	3		207

	AC	AF	BA ±.09	BS	ES MIN	EV	SQ. KEY
IN	6.88	2.13	3.50	6.50	2.41	.50	.313
MM	175	54	89	165	61	13	7.95

	FRAME	B	2F ±.03
IN	213T	6.50	5.50
MM		165	140
IN	214T	8.00	7.00
MM		203	178

- 1: ALL ROUGH DIMENSIONS MAY VARY .25" DUE TO CASTING AND/OR FABRICATION VARIATIONS.
- 2: LARGEST MOTOR WIDTH
- 3: CONDUIT OPENING MAY BE LOCATED IN STEPS OF 90°. STANDARD AS SHOWN.
- 4: TOLERANCES SHOWN ARE IN INCHES ONLY.
- 5: FRAME REFERENCE: 10.250/213/215

07-2587/A

Nidec Motor Corporation
 St. Louis, Missouri

INFORMATION DISCLOSED ON THIS DOCUMENT IS CONSIDERED PROPRIETARY AND SHALL NOT BE REPRODUCED OR DISCLOSED WITHOUT WRITTEN CONSENT OF NIDEC MOTOR CORPORATION



ISSUED BY
S. KULKARNI
 APPROVED BY
R. KING

IHP_DP_NMCA (MAR-2011) PROENGINEER