

EFFECTIVE:
26-MAY-11

SUPERSEDES:
04-AUG-03

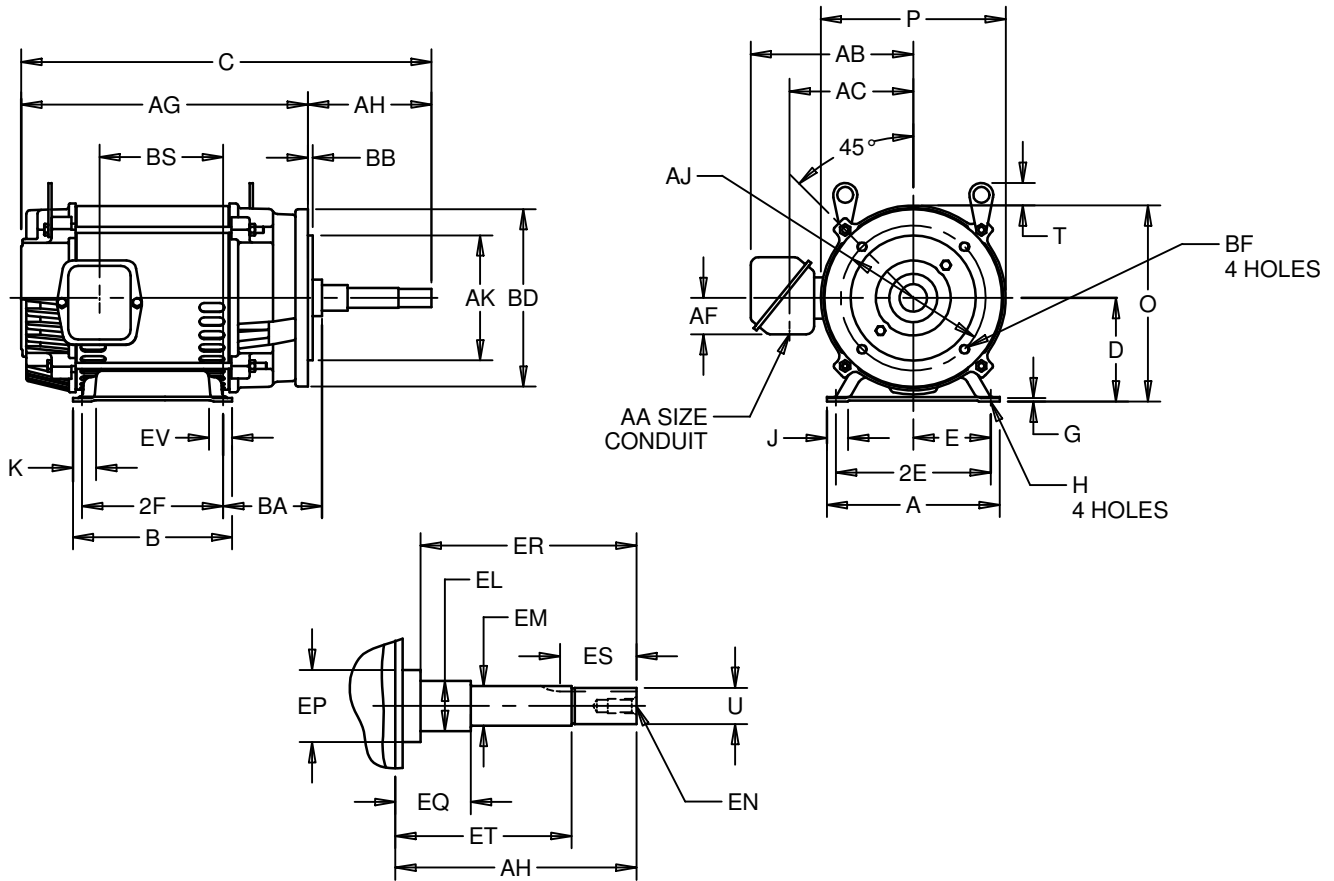
HORIZONTAL MOTORS

ODP CLOSE-COUPLED PUMP

FRAME: 182, 184JM, JP
BASIC TYPE: D4, D-1

PRINT:
07-2589

SHEET:
1 OF 1



ALL DIMENSIONS ARE IN INCHES AND MILLIMETERS

UNITS	A	B	D -.06	E	2E ±.03	G	H +.05	J	K	O	P ²	T ⁶
IN	8.75	6.50	4.50	3.75	7.50	.19	.41	1.13	2.00	8.50	8.00	.94
MM	222	165	114	95	191	5	10	29	51	216	203	24

UNITS	U -.0005	AA	AB	AC	AF	AG	AJ	AK -.003	BA	BB -.031	BD MAX
IN	.8745	.75	6.88	5.63	2.13	11.81	5.875	4.500	3.63	.156	6.63
MM	22.212		175	143	54	300	149.23	114.30	92	3.96	168

UNITS	BF ⁴	BS F-1	BS F-2	EL -.002	EM -.0005	EN ⁴	EP MIN	ES MIN	EV	SQ KEY
IN	3/8-16 X .56	7.40	1.90	1.250	1.0000	3/8-16 X .75	1.25	1.66	.50	.188
MM		188	48	31.75	25.400		32	42	13	4.78

FRAME	UNITS	2F ±.03
182JM,JP	IN	4.50
	MM	114
184JM,JP	IN	5.50
	MM	140

FRAME	UNITS	C	AH ±.031	EQ ±.015	ER MIN	ET ±.015
180JM	IN	16.06	4.250	.625	4.25	2.875
	MM	408	107.95	15.88	108	73.03
180JP	IN	19.13	7.313	1.563	7.31	5.938
	MM	486	185.75	39.70	186	150.83

- ALL ROUGH DIMENSIONS MAY VARY BY .25" DUE TO CASTING AND/OR FABRICATION VARIATIONS.
- LARGEST MOTOR WIDTH.
- STANDARD ASSEMBLY POSITION F-1 SHOWN. F-2 IS PROVIDED WHEN SPECIFIED. CONDUIT OPENINGS MAY BE LOCATED IN STEPS OF 90° REGARDLESS OF LOCATION. STANDARD AS SHOWN WITH CONDUIT OPENING DOWN.
- TAP SIZE AND BOLT PENETRATION ALLOWANCE.
- ALL TAPPED HOLES ARE UNIFIED NATIONAL COARSE, RIGHT HAND THREAD.
- LIFTING LUGS - WHEN SPECIFIED ON BILL.
- TOLERANCES SHOWN ARE IN INCHES ONLY.
- FRAME REFERENCE: 6.375/182/184

TOLERANCES	
FACE RUNOUT	.004 T.I.R.
PERMISSIBLE ECCENTRICITY OF MOUNTING RABBET	.004 T.I.R.
PERMISSIBLE SHAFT RUNOUT	.002 T.I.R.

07-2589/A

Nidec Motor Corporation
St. Louis, Missouri

INFORMATION DISCLOSED ON THIS DOCUMENT IS CONSIDERED PROPRIETARY AND SHALL NOT BE REPRODUCED OR DISCLOSED WITHOUT WRITTEN CONSENT OF NIDEC MOTOR CORPORATION



ISSUED BY
A. HINGANKAR
APPROVED BY
R. KING

IHP_DP_NMCA (MAR-2011) SOLIDEDGE