

EFFECTIVE:
27-MAY-11

HORIZONTAL MOTORS

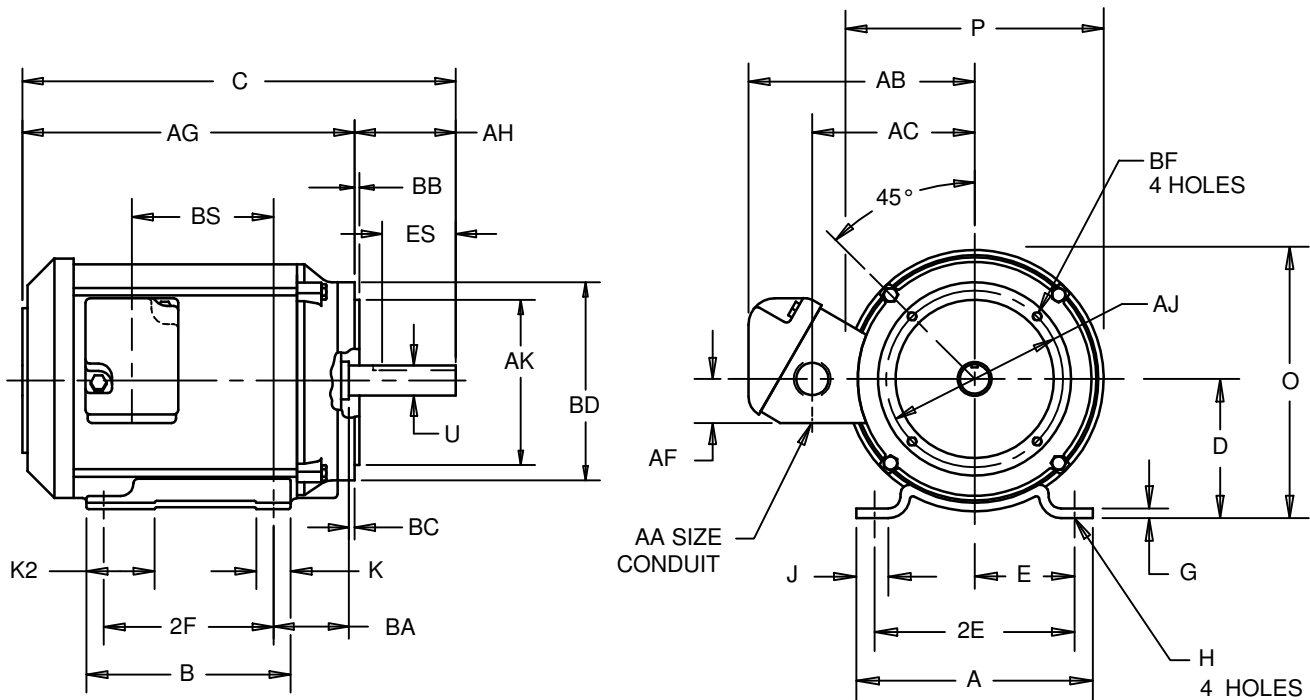
TOTALLY ENCLOSED FAN COOLED

PRINT:
07-2596

SUPERSEDES:
22-JAN-04

FRAME: 143, 145TC
BASIC TYPE: FTC, TC, TCE, TCI

SHEET:
1 OF 1



ALL DIMENSIONS ARE IN INCHES AND MILLIMETERS

UNITS	A	B	C	D -.06	E	2E ±.03	G	H +.05	J	K	K2
IN	6.50	6.00	13.50	3.50	2.75	5.50	.13	.34	1.00	.94	1.88
MM	165	152	343	89	70	140	3	9	25	24	48

UNITS	O	P ²	U -.0005	AA	AB	AC	AF	AG	AH	AJ	AK -.003
IN	7.38	7.75	.8750	3/4 NPT	6.38	4.56	1.25	11.38	2.13	5.875	4.500
MM	187	197	22.225		162	116	32	289	54	149.23	114.30

UNITS	BA	BB MIN	BC	BD MAX	BF ⁴	BS	ES MIN	SQ KEY
IN	2.75	.13	.13	6.50	3/8-16 X .56	4.38	1.41	.188
MM	70	3	3	156		111	35	4.78

FRAME	UNITS	2F ±.03
143TC	IN	4.00
	MM	102
145TC	IN	5.00
	MM	127

- 1: ALL ROUGH DIMENSIONS MAY VARY BY .25" DUE TO CASTING AND/OR FABRICATION VARIATIONS.
- 2: LARGEST MOTOR WIDTH.
- 3: CONDUIT BOX MAY BE LOCATED ON EITHER SIDE. CONDUIT OPENINGS LOCATED IN BOTTOM AND BOTH SIDES OF CONDUIT BOX.
- 4: TAP SIZE AND BOLT PENETRATION ALLOWANCE.
- 5: ALL TAPPED HOLES ARE UNIFIED NATIONAL COARSE, RIGHT HAND THREAD.
- 6: TOLERANCES SHOWN ARE IN INCHES ONLY.
- 7: FRAME REFERENCE: 6.500/143/145

TOLERANCES	
FACE RUNOUT	.004 T.I.R.
PERMISSIBLE ECCENTRICITY OF MOUNTING RABBET	.004 T.I.R.
PERMISSIBLE SHAFT RUNOUT	.002 T.I.R.

07-2596/A

Nidec Motor Corporation
St. Louis, Missouri

INFORMATION DISCLOSED ON THIS DOCUMENT IS CONSIDERED PROPRIETARY AND SHALL NOT BE REPRODUCED OR DISCLOSED WITHOUT WRITTEN CONSENT OF NIDEC MOTOR CORPORATION



ISSUED BY
A. HINGANKAR
APPROVED BY
R. KING

IHP_DP_NMCA (MAR-2011) SOLIDEDGE