

EFFECTIVE:  
**31-MAY-11**

SUPERSEDES:  
**13-FEB-09**

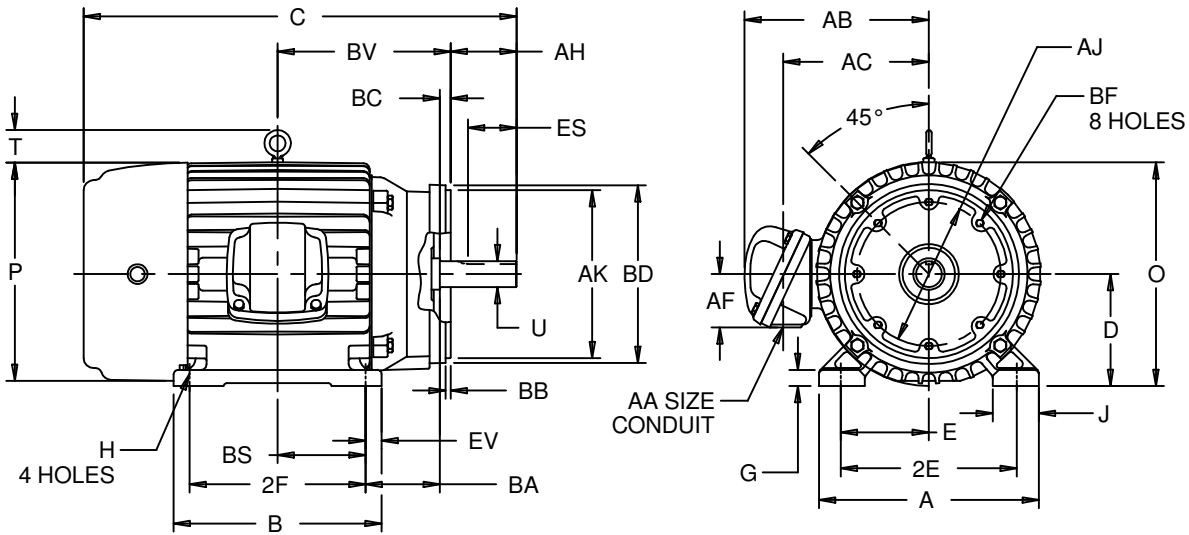
# HORIZONTAL MOTORS

WITH NEMA "C" BKT AND STANDARD SHORT SHAFT

FRAME: 284, 286TSC  
BASIC TYPE: TC

PRINT:  
**07-2724**

SHEET:  
**1 OF 1**



ALL DIMENSIONS ARE IN INCHES AND MILLIMETERS

UNITS	A	B	C	D -.06	E	2E ±.03	G	H +.05	J	O
IN	14.00	13.00	26.50	7.00	5.50	11.00	1.00	.53	2.88	14.28
MM	356	330	673	178	140	279	25	13	73	363

UNITS	P <sup>5</sup>	T	U -.001	AA	AB	AC	AF	AH	AJ	AK	BA
IN	14.59	2.03	1.625	1.50 NPT	11.63	9.19	2.63	3.00	9.000	10.500	4.75
MM	371	52	41.28		295	233	67	76	228.60	266.70	121

UNITS	BB	BC	BD MAX	BS	BF <sup>2</sup>	BV	ES MIN	EV	SQ KEY
IN	.25	.25	11.25	5.50	1/2-13 X .75	10.50	1.91	1.00	.375
MM	6	6	286	140		267	49	25	9.53

FRAME	UNITS	2F ±.03
284TSC	IN	9.50
	MM	241
286TSC	IN	11.00
	MM	279

- 1: ALL ROUGH DIMENSIONS MAY VARY BY .25" DUE TO CASTING AND/OR FABRICATION VARIATIONS.
- 2: TAP SIZE AND BOLT PENETRATION ALLOWANCE.
- 3: ALL TAPPED HOLES ARE UNIFIED NATIONAL COARSE, RIGHT HAND THREAD.
- 4: CONDUIT BOX MAY BE LOCATED ON EITHER SIDE OF MOTOR. CONDUIT OPENINGS MAY BE LOCATED IN STEPS OF 90° REGARDLESS OF LOCATION. STANDARD AS SHOWN WITH CONDUIT OPENING DOWN.
- 5: LARGEST MOTOR WIDTH.
- 6: TOLERANCES SHOWN ARE IN INCHES ONLY.

TOLERANCES	10.500 AK
FACE RUNOUT	.004 T.I.R.
PERMISSIBLE ECCENTRICITY OF MOUNTING RABBET	.004 T.I.R.
PERMISSIBLE SHAFT RUNOUT	.002 T.I.R.
TOLERANCE ON "AK" DIMENSION	-.003

07-2724/A

**Nidec Motor Corporation**  
St. Louis, Missouri

INFORMATION DISCLOSED ON THIS DOCUMENT  
IS CONSIDERED PROPRIETARY AND SHALL NOT BE  
REPRODUCED OR DISCLOSED WITHOUT WRITTEN  
CONSENT OF NIDEC MOTOR CORPORATION



ISSUED BY  
**V. PAWAR**  
APPROVED BY  
**R. KING**

IHP\_DP\_NMCA (MAR-2011) SOLIDEDGE