

EFFECTIVE:
10-JUN-11

HORIZONTAL MOTORS

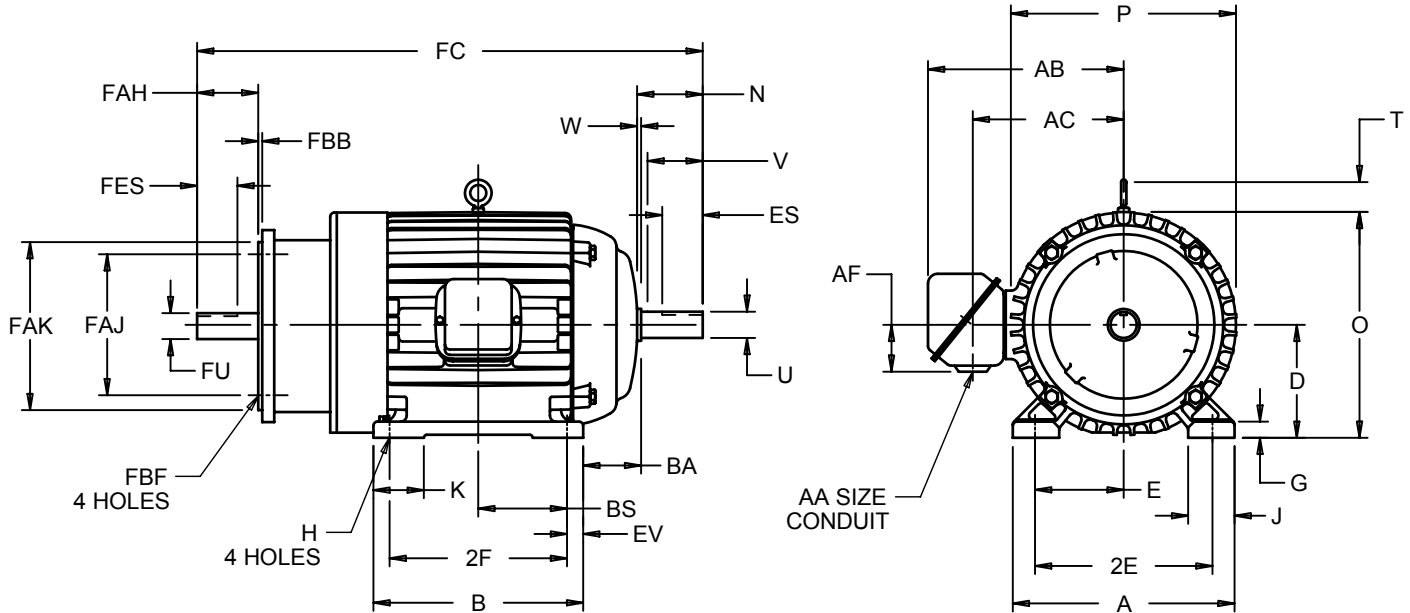
AUTOMOTIVE DUTY WITH ACCOMODATION FOR BRAKE

PRINT:
07-2752

SUPERSEDES:
13-NOV-08

FRAME: 324, 326U
BASIC TYPE: JAD, JDE

SHEET:
1 OF 1



ALL DIMENSIONS ARE IN INCHES AND MILLIMETERS

UNITS	A	B	D -.06	E	2E ±.03	G	H +.05	J	K	N	O	P ²
IN	15.75	15.00	8.00	6.25	12.50	1.13	.66	3.25	4.65	6.00	16.13	16.22
MM	400	381	203	159	318	29	17	83	118	152	410	412

UNITS	T	U -.001	V MIN	W	AA	AB	AC	AF	BA	BS	ES MIN	EV
IN	2.03	1.875	5.38	.38	2.50	14.13	10.75	3.25	5.25	6.00	4.25	1.50
MM	52	47.63	137	10		359	273	83	133	152	108	38

UNITS	FC	FAH	FAJ	FAK -.005	FBB MIN	FBF	FES MIN	FU -.001	PE SQ KEY	SE SQ KEY
IN	39.19	4.88	11.000	12.500	.25	5/8-11	3.75	1.625	.500	.375
MM	995	124	279.40	317.50	6	NPT	95	41.28	12.70	9.53

FRAME	UNITS	2F ±.03
324U	IN	10.50
	MM	267
326U	IN	12.00
	MM	305

- 1: ALL ROUGH CASTING DIMENSIONS MAY VARY BY .25" DUE TO CASTING AND/OR FABRICATION VARIATIONS.
- 2: LARGEST MOTOR WIDTH.
- 3: TOLERANCES SHOWN ARE IN INCHES ONLY.
- 4: STANDARD ASSEMBLY POSITION F-1 IS SHOWN F-2 IS PROVIDED WHEN SPECIFIED. CONDUIT OPENINGS MAY BE LOCATED IN STEPS OF 90° REGARDLESS OF LOCATION. STANDARD AS SHOWN WITH CONDUIT OPENING DOWN.

TOLERANCES	12.5 FAK
FACE RUNOUT	.007 T.I.R.
PERMISSIBLE ECCENTRICITY OF MOUNTING RABBET	.007 T.I.R.
PERMISSIBLE SHAFT RUNOUT	.003 T.I.R.

07-2752/A

Nidec Motor Corporation
St. Louis, Missouri

INFORMATION DISCLOSED ON THIS DOCUMENT IS CONSIDERED PROPRIETARY AND SHALL NOT BE REPRODUCED OR DISCLOSED WITHOUT WRITTEN CONSENT OF NIDEC MOTOR CORPORATION



ISSUED BY
D. MISAL
APPROVED BY
R. KING

IHP_DP_NMCA (MAR-2011) SOLIDEDGE