

EFFECTIVE:  
14-DEC-12

SUPERSEDES:  
04-MAY-11

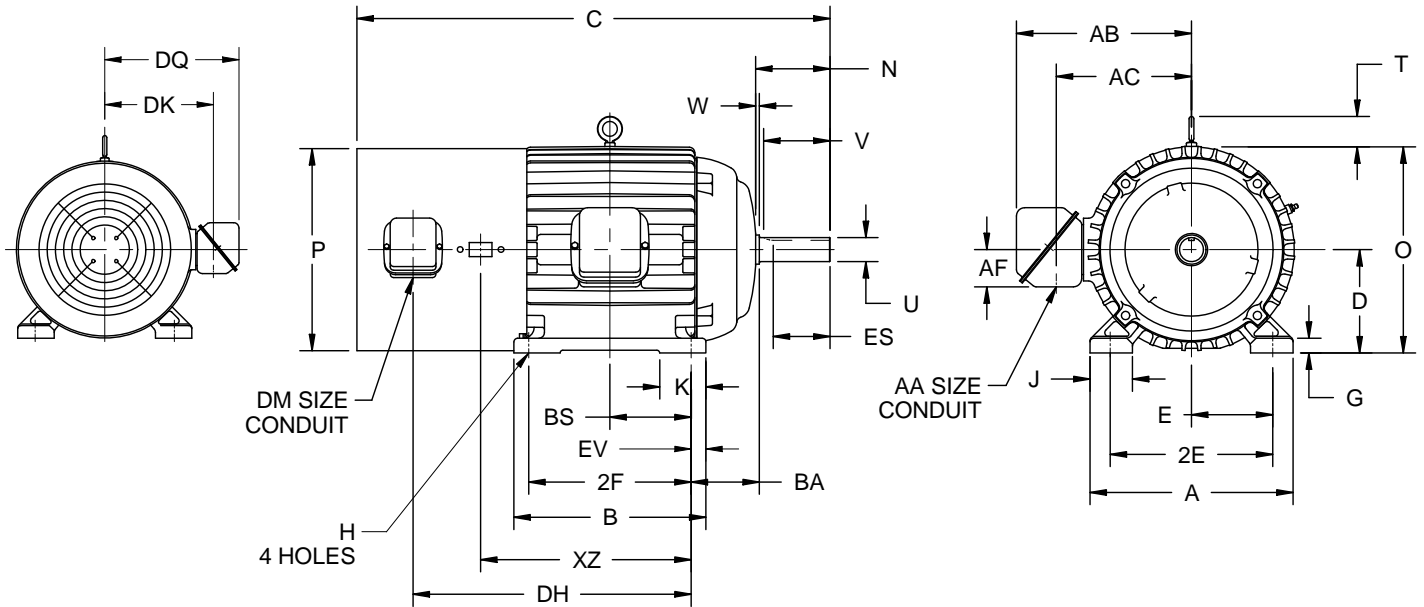
# HORIZONTAL MOTORS

## VECTOR CONTROL

FRAME: 444, 445, 447T  
BASIC TYPE: CTB, CTBX

PRINT:  
07-2757

SHEET:  
1 OF 1



ALL DIMENSIONS ARE IN INCHES AND MILLIMETERS

UNITS	A	D -.06	E	2E ±.03	G	H +.05	J	N	O
IN	22.00	11.00	9.00	18.00	1.50	.81	4.00	8.88	22.63
MM	559	279	229	457	38	21	102	226	575

UNITS	P <sup>2</sup>	T	U -.001	V MIN	W	AA	AB	AC	AF
IN	22.53	3.22	3.375	8.25	.38	3.00	19.38	15.00	4.72
MM	572	82	85.73	210	10		492	381	120

UNITS	BA ±.09	DK	DM	DQ	ES MIN	EV	SQ KEY
IN	7.50	12.56	.75	14.16	6.91	1.50	.875
MM	191	319		360	176	38	22.23

FRAME	UNITS	B	C	K	BS	DH	XZ
444, 445T	IN	19.50	50.75	6.00	8.25	33.69	27.94
	MM	495	1289	152	210	856	710
447T	IN	23.00	54.25	4.00	10.00	37.19	21.44
	MM	584	1378	102	254	945	545

FRAME	UNITS	2F ±.03
444T	IN	14.50
	MM	368
445T	IN	16.50
	MM	419
447T	IN	20.00
	MM	508

1. ALL ROUGH CASTING DIMENSIONS MAY VARY BY .25" DUE TO CASTING AND/OR FABRICATION VARIATIONS.
2. LARGEST MOTOR WIDTH.
3. TOLERANCES SHOWN ARE IN INCHES ONLY.
4. STANDARD ASSEMBLY POSITION F-1 IS SHOWN F-2 IS PROVIDED WHEN SPECIFIED. CONDUIT OPENINGS MAY BE LOCATED IN STEPS OF 90 DEGREES REGARDLESS OF LOCATION. STANDARD AS SHOWN WITH CONDUIT OPENING DOWN.

07-2757/D

**Nidec Motor Corporation**  
St. Louis, Missouri

INFORMATION DISCLOSED ON THIS DOCUMENT IS CONSIDERED PROPRIETARY AND SHALL NOT BE REPRODUCED OR DISCLOSED WITHOUT WRITTEN CONSENT OF NIDEC MOTOR CORPORATION



ISSUED BY  
**E. AYALA**  
APPROVED BY  
**J. O'BRIEN**

IHP\_DP\_NMCA (MAR-2011) SOLIDEDGE