

EFFECTIVE:
09-JUN-11

SUPERSEDES:
08-MAR-10

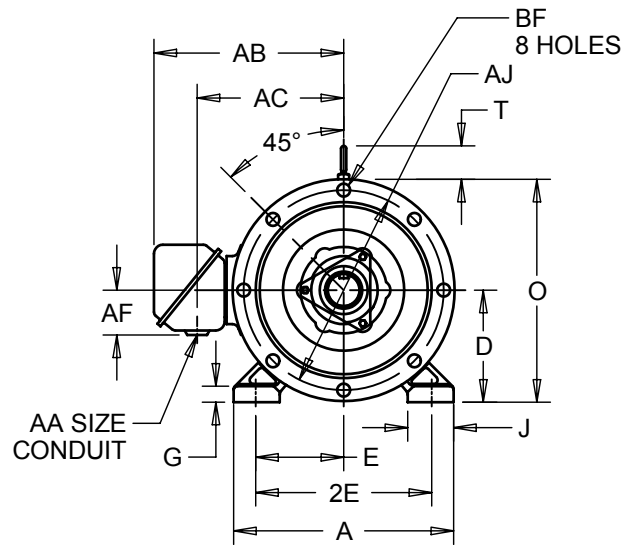
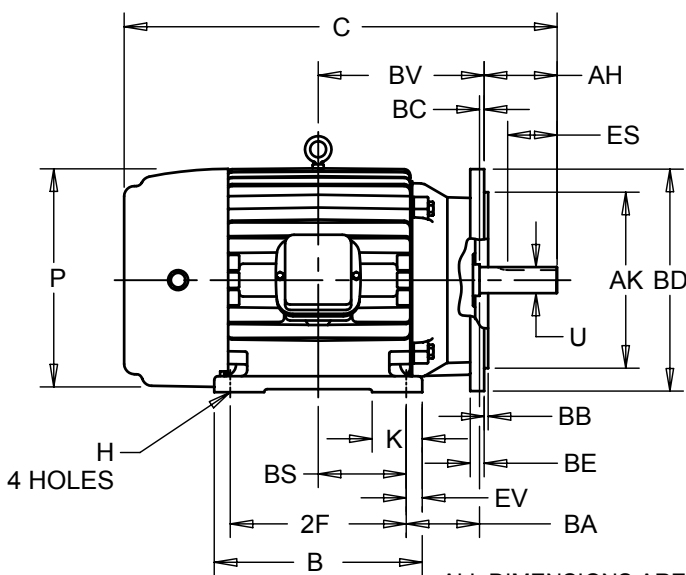
HORIZONTAL MOTORS

AUTOMOTIVE DUTY WITH NEMA "D" BRACKET

FRAME: 444, 445, 447UD, USD
BASIC TYPE: JAD, JDE

PRINT:
07-2765

SHEET:
1 OF 1



ALL DIMENSIONS ARE IN INCHES AND MILLIMETERS

UNITS	A	D -.06	E	2E ±.03	G	H +.05	J	O	P ²	T	AA	AB
IN	22.00	11.00	9.00	18.00	1.50	.81	4.00	22.63	23.50	3.25	2 ½ NPT	19.75
MM	559	279	229	457	38	21	102	575	597	83		502

UNITS	AC	AF	AJ	AK -.005	BA ±.09	BB	BC	BD MAX	BE	BF	EV
IN	15.13	5.53	20.000	18.000	7.50	.25	.00	22.00	1.00	.81	1.50
MM	384	140	508.00	457.20	191	6	0	559	25	21	38

FRAME	UNITS	U -.001	AH	ES MIN	SQ KEY
440UD	IN	2.875	8.63	7.00	.750
	MM	73.03	219	178	19.05
440USD	IN	2.125	4.25	2.75	.500
	MM	53.98	108	70	12.70

FRAME	UNITS	C
444, 445UD	IN	45.75
	MM	1162
444, 445USD	IN	41.38
	MM	1051
447UD	IN	49.25
	MM	1251
447USD	IN	44.88
	MM	1140

FRAME	UNITS	B	K	BS	BV
444, 445UD, USD	IN	19.50	6.00	8.25	15.75
	MM	495	152	210	400
447UD, USD	IN	23.00	4.00	10.00	17.50
	MM	584	102	254	445

TOLERANCES	
FACE RUNOUT	.007 T.I.R.
PERMISSIBLE ECCENTRICITY OF MOUNTING RABBET	.007 T.I.R.
PERMISSIBLE SHAFT RUNOUT	.003 T.I.R.

FRAME	UNITS	2F ±.03
444UD, USD	IN	14.50
	MM	368
445UD, USD	IN	16.50
	MM	419
447UD, USD	IN	20.00
	MM	508

- 1: ALL ROUGH CASTING DIMENSIONS MAY VARY BY .25" DUE TO CASTING AND /OR FABRICATION VARIATIONS.
- 2: LARGEST MOTOR WIDTH.
- 3: TOLERANCES SHOWN ARE IN INCHES ONLY.
- 4: STANDARD ASSEMBLY POSITION F-1 IS SHOWN F-2 IS PROVIDED WHEN SPECIFIED. CONDUIT OPENINGS MAY BE LOCATED IN STEPS OF 90° REGARDLESS OF LOCATION. STANDARD AS SHOWN WITH CONDUIT OPENING DOWN

07-2765/B

Nidec Motor Corporation
St. Louis, Missouri

INFORMATION DISCLOSED ON THIS DOCUMENT IS CONSIDERED PROPRIETARY AND SHALL NOT BE REPRODUCED OR DISCLOSED WITHOUT WRITTEN CONSENT OF NIDEC MOTOR CORPORATION



ISSUED BY
M. CHAUDHARI
APPROVED BY
R. KING

IHP_DP_NMCA (MAR-2011) SOLIDEDGE