

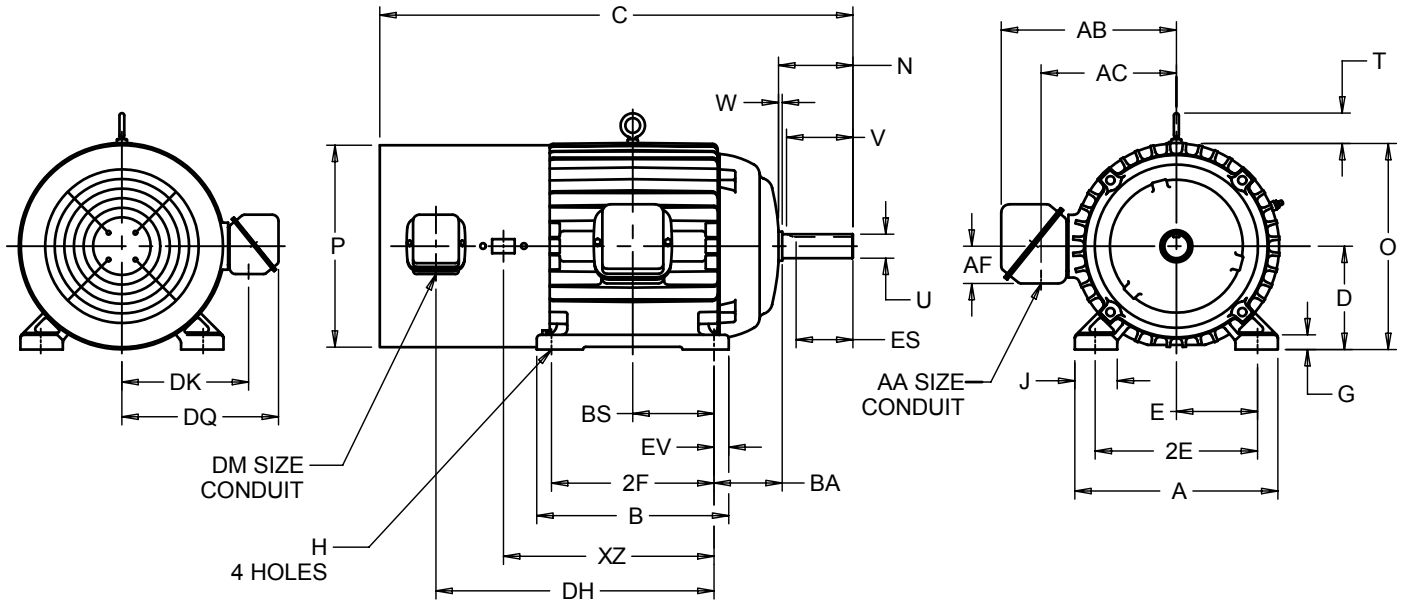
EFFECTIVE:
10-JUN-11

SUPERSEDES:
10-OCT-08

HORIZONTAL MOTORS
VECTOR CONTROL
FRAME: 284, 286T
BASIC TYPE: CTBI,CTBX-CONVERSION

PRINT:
07-2778

SHEET:
1 OF 1



ALL DIMENSIONS ARE IN INCHES AND MILLIMETERS

UNITS	A	B	C	D -.06	E	2E ±.03	G	H +.05	J	N
IN	13.75	13.00	32.94	7.00	5.50	11.00	1.00	.53	2.88	5.00
MM	349	330	837	178	140	279	25	13	73	127

UNITS	O	P ²	T	U -.001	V MIN	W	AA	AB	AC	AF	BA
IN	14.00	14.00	2.03	1.875	4.38	.38	2.00	13.07	9.69	3.25	4.75
MM	356	356	52	47.63	111	10		332	246	83	121

UNITS	BS	DH	DK	DM	DQ	ES MIN	EV	XZ	SQ KEY
IN	5.50	20.88	8.31	.75	9.88	3.28	1.00	17.56	.500
MM	140	530	211		251	83	25	446	12.70

FRAME	UNITS	2F ±.03
284T	IN	9.50
	MM	241
286T	IN	11.00
	MM	279

- 1: ALL ROUGH DIMENSIONS MAY VARY .25" DUE TO CASTING AND/OR FABRICATION VARIATIONS.
- 2: LARGEST MOTOR WIDTH.
- 3: TOLERANCES SHOWN ARE IN INCHES ONLY.
- 4: STANDARD ASSEMBLY POSITION F-1 IS SHOWN F-2 IS PROVIDED WHEN SPECIFIED. CONDUIT OPENINGS MAY BE LOCATED IN STEPS OF 90° REGARDLESS OF LOCATION. STANDARD AS SHOWN WITH CONDUIT OPENING DOWN

07-2778/A

Nidec Motor Corporation
St. Louis, Missouri

INFORMATION DISCLOSED ON THIS DOCUMENT IS CONSIDERED PROPRIETARY AND SHALL NOT BE REPRODUCED OR DISCLOSED WITHOUT WRITTEN CONSENT OF NIDEC MOTOR CORPORATION



ISSUED BY
M. CHAUDHARI
APPROVED BY
R. KING

IHP_DP_NMCA (MAR-2011) SOLIDEDGE