

EFFECTIVE:  
18-OCT-11

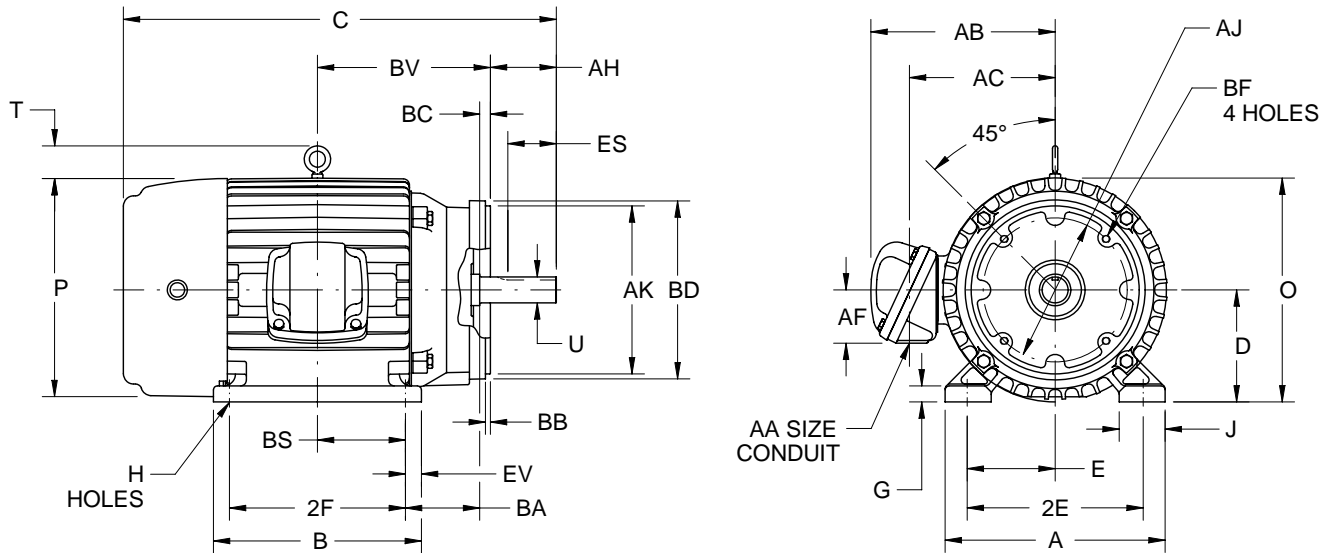
SUPERSEDES:  
13-JUN-11

# HORIZONTAL MOTORS WITH NEMA "C" BRACKET

FRAME: 180TC  
BASIC TYPE: CE, TC

PRINT:  
07-2800

SHEET:  
1 OF 1



ALL DIMENSIONS ARE IN INCHES AND MILLIMETERS

UNITS	A	B	C	D	E	2E	G	H
IN	8.88	6.75	17.44	4.50	3.75	7.50	.63	.41
MM	226	171	443	114	95	191	16	10

UNITS	J	O	P <sup>5</sup>	T	U	AA	AB	AC
IN	1.56	9.38	9.50	2.06	1.1250	3/4 NPT	7.94	5.75
MM	40	238	241	52	28.575		202	146

UNITS	AF	AH	AJ	AK	BA	BB	BC	BD MAX
IN	2.13	2.63	7.250	8.500	3.50	.25	.13	9.00
MM	54	67	184.15	215.90	89	6	3	229

UNITS	BS	BF <sup>2</sup>	BV	ES MIN	EV	SQ KEY
IN	2.63	1/2-13 X .75	6.38	1.78	.63	.250
MM	67		162	45	16	6.35

FRAME	UNITS	2E ±.03
182TC	IN	7.50
	MM	191
184TC	IN	7.50
	MM	191

1. DIMENSIONS MAY VARY .25" DUE TO CASTING AND/OR FABRICATION VARIATIONS.
2. TAP SIZE AND BOLT PENETRATION ALLOWANCE.
3. ALL TAPPED HOLES ARE UNIFIED NATIONAL COARSE, RIGHT HAND THREAD.
4. CONDUIT BOX MAY BE LOCATED ON EITHER SIDE OF MOTOR. CONDUIT OPENING MAY BE LOCATED IN STEPS OF 90 DEGREES REGARDLESS OF LOCATION. STANDARD AS SHOWN WITH CONDUIT OPENING DOWN.
5. LARGEST MOTOR WIDTH.
6. TOLERANCES SHOWN ARE IN INCHES ONLY.

TOLERANCES	
FACE RUNOUT	.004 T.I.R.
PERMISSIBLE ECCENTRICITY OF MOUNTING RABBIT	.004 T.I.R.
PERMISSIBLE SHAFT RUNOUT FOR SPECIAL SHAFT RUNOUT (WHEN SPECIFIED)	.002 T.I.R.
	.001 T.I.R.

07-2800/B

**Nidec Motor Corporation**  
St. Louis, Missouri

INFORMATION DISCLOSED ON THIS DOCUMENT  
IS CONSIDERED PROPRIETARY AND SHALL NOT BE  
REPRODUCED OR DISCLOSED WITHOUT WRITTEN  
CONSENT OF NIDEC MOTOR CORPORATION



ISSUED BY  
**K. FRIEDMAN**  
APPROVED BY  
**J. O'BRIEN**

IHP\_DP\_NMCA (MAR-2011) SOLIDEDGE