

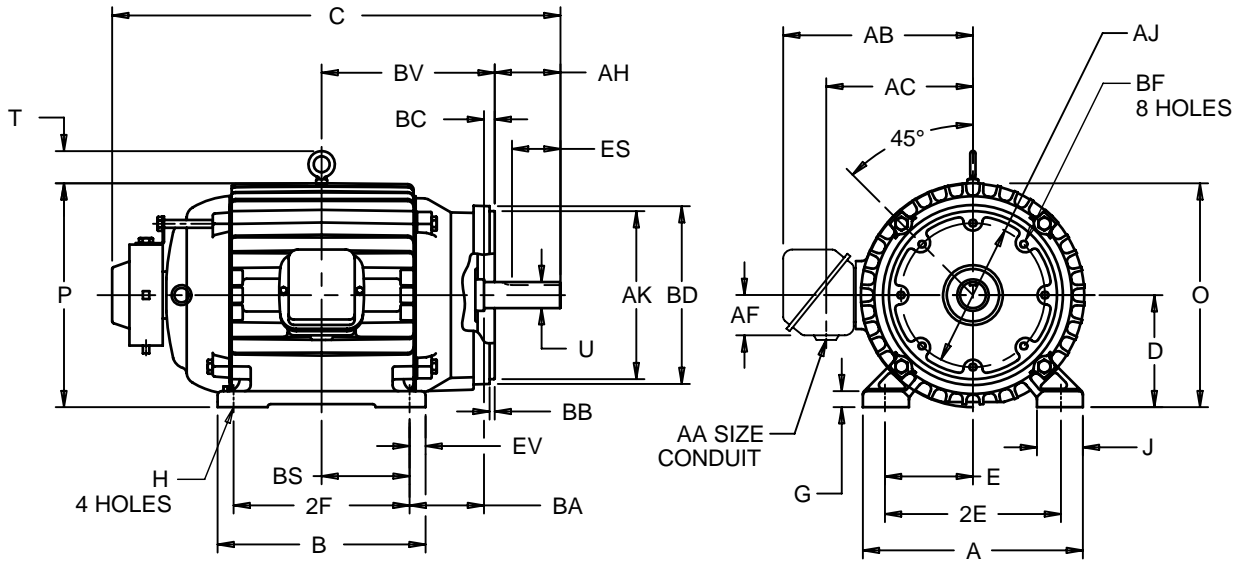
EFFECTIVE:  
05-DEC-11

SUPERSEDES:  
13-JUN-11

**HORIZONTAL MOTORS**  
TENV - VARIDYNE  
FRAME: 182, 184TC  
BASIC TYPE: CTNX-CONVERSION

PRINT:  
07-2802

SHEET:  
1 OF 1



ALL DIMENSIONS ARE IN INCHES AND MILLIMETERS

UNITS	A	B	C	D	E	2E	G	H	J	O
IN	8.88	6.75	15.75	.06	4.50	±.03	.63	.41	1.50	9.38
MM	226	171	400	114	95	191	16	10	38	238

UNITS	P <sup>5</sup>	T	U	AA	AB	AC	AF	AH	AJ	AK	BA <sup>7</sup>
IN	9.50	1.75	1.1250	.75	8.16	5.84	2.00	2.62	7.250	8.500	3.50
MM	241	44	28.575		207	148	51	67	184.15	215.90	89

UNITS	BB	BC	BD	BS	BF <sup>2</sup>	BV	ES	EV	XZ	SQ
IN	.25	.13	MAX 9.00	2.75		6.38	MIN 1.78	.63	8.81	.250
MM	6	3	229	70	1/2-13 X .75	162	45	16	224	6.35

FRAME	UNITS	2F
182TC	IN	±.03 4.50
	MM	114
184TC	IN	5.50
	MM	140

- 1: ALL ROUGH DIMENSIONS MAY VARY BY .25" DUE TO CASTING AND/OR FABRICATION VARIATIONS.
- 2: TAP SIZE AND BOLT PENETRATION ALLOWANCE.
- 3: ALL TAPPED HOLES ARE UNIFIED NATIONAL COARSE, RIGHT HAND THREAD.
- 4: CONDUIT BOX MAY BE LOCATED ON EITHER SIDE OF MOTOR. CONDUIT OPENINGS MAY BE LOCATED IN STEPS OF 90° REGARDLESS OF LOCATION. STANDARD AS SHOWN WITH CONDUIT OPENING DOWN.
- 5: LARGEST MOTOR WIDTH.
- 6: TOLERANCES SHOWN ARE IN INCHES ONLY.
- 7: NON-NEMA BA.
- 8: ENCODER CONNECTOR IS SHOWN OUT OF POSITION.

TOLERANCES	8.500 AK
FACE RUNOUT	.004 T.I.R.
PERMISSIBLE ECCENTRICITY OF MOUNTING RABBET	.004 T.I.R.
PERMISSIBLE SHAFT RUNOUT	.002 T.I.R.

07-2802/B

**Nidec Motor Corporation**  
St. Louis, Missouri

INFORMATION DISCLOSED ON THIS DOCUMENT IS CONSIDERED PROPRIETARY AND SHALL NOT BE REPRODUCED OR DISCLOSED WITHOUT WRITTEN CONSENT OF NIDEC MOTOR CORPORATION



ISSUED BY  
**R. KING**  
APPROVED BY  
**J. HAGENE**

IHP\_DP\_NMCA (MAR-2011) SOLIDEDGE