

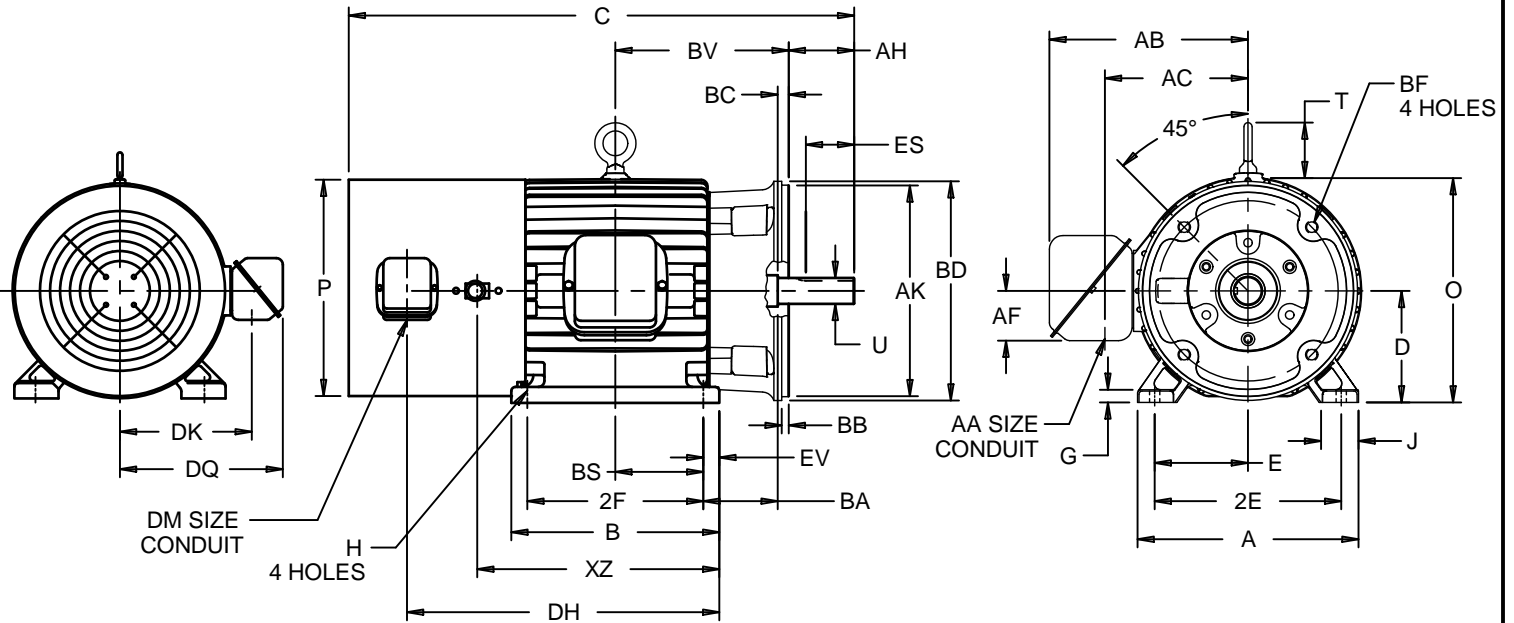
EFFECTIVE:
03-SEP-15

SUPERSEDES:
13-JUN-11

DIMENSION PRINT
TEBC - VARIDYNE
FRAME: 182, 184TC
BASIC TYPE: CTBX, CTBI-CONVERSION

PRINT:
07-2803

SHEET:
1 OF 1



ALL DIMENSIONS ARE IN INCHES AND MILLIMETERS

UNITS	A	B	C	D -.06	E	2E ±.03	G	H +.05	J	O	P ⁵	T
IN	9.00	6.75	20.09	4.50	3.75	7.50	.50	.41	1.50	9.25	9.19	2.03
MM	229	171	510	114	95	191	13	10	38	235	233	52

UNITS	U -.0005	AA	AB	AC	AF	AH	AJ	AK -.003	BA	BB MIN	BC	BD MAX
IN	1.1250	.75	8.16	5.84	2.00	2.62	7.250	8.500	3.50	.25	.13	9.00
MM	28.575		207	148	51	67	184.15	215.90	89	6	3	229

UNITS	BS	BF ²	BV	DH	DK	DQ	DM	ES MIN
IN	2.75	1/2-13 X .75	6.38	11.81	5.88	7.50	.75	1.78
MM	70		162	300	149	191		45

UNITS	EV	XZ	SQ KEY
IN	.63	8.81	.250
MM	16	224	6.35

FRAME	UNITS	2F ±.03
182TC	IN	4.50
	MM	114
184TC	IN	5.50
	MM	140

1: ALL ROUGH DIMENSIONS MAY VARY BY .25" DUE TO CASTING AND/OR FABRICATION VARIATIONS.
2: TAP SIZE AND BOLT PENETRATION ALLOWANCE.
3: ALL TAPPED HOLES ARE UNIFIED NATIONAL COARSE, RIGHT HAND THREAD.

4: CONDUIT BOX MAY BE LOCATED ON EITHER SIDE OF MOTOR. CONDUIT OPENINGS MAY BE LOCATED IN STEPS OF 90 DEGREES REGARDLESS OF LOCATION. STANDARD AS SHOWN WITH CONDUIT OPENING DOWN.
5: LARGEST MOTOR WIDTH.
6: TOLERANCES SHOWN ARE IN INCHES ONLY.

TOLERANCES	
FACE RUNOUT	.004 T.I.R.
PERMISSIBLE ECCENTRICITY OF MOUNTING RABBET	.004 T.I.R.
PERMISSIBLE SHAFT RUNOUT	.002 T.I.R.

07-2803/D

Nidec Motor Corporation
St. Louis, Missouri

INFORMATION DISCLOSED ON THIS DOCUMENT IS CONSIDERED PROPRIETARY AND SHALL NOT BE REPRODUCED OR DISCLOSED WITHOUT WRITTEN CONSENT OF NIDEC MOTOR CORPORATION



ISSUED BY
R. KING
APPROVED BY
R. TIMMERMAN

IHP_DP_NMCA (MAR-2011) SOLIDEDGE