

EFFECTIVE:
13-JUN-11

SUPERSEDES:
02-APR-09

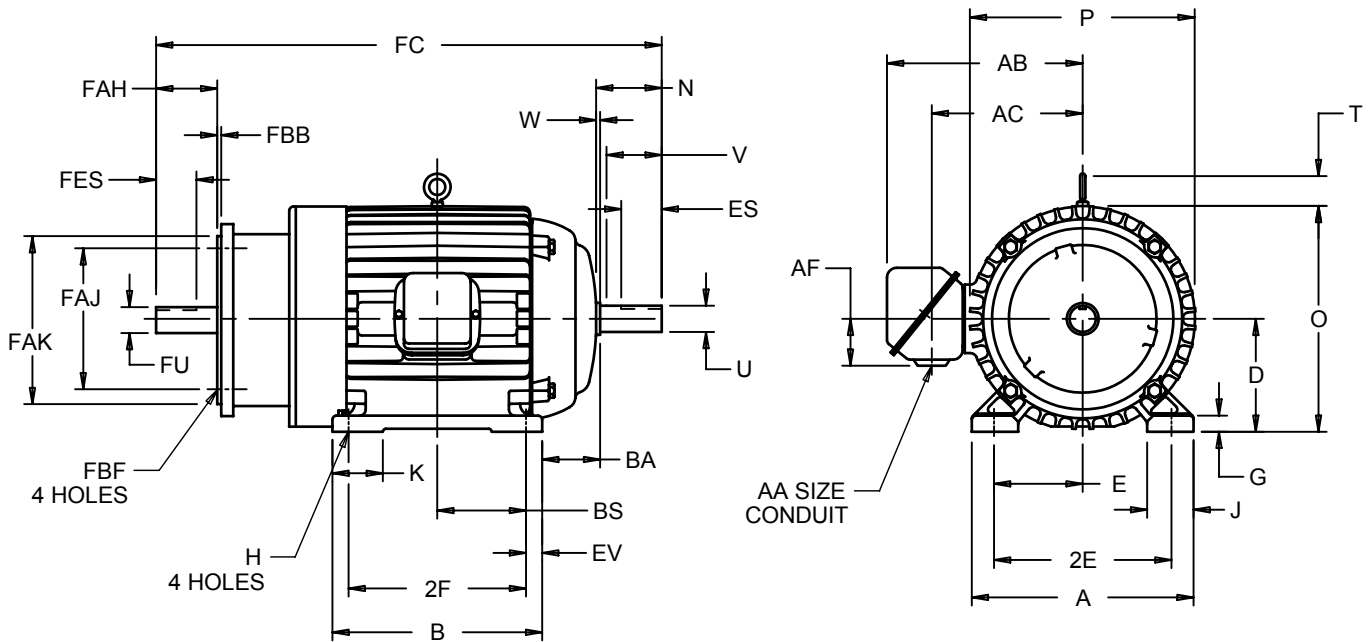
HORIZONTAL MOTORS

AUTOMOTIVE DUTY WITH ACCOMODATION FOR BRAKE

FRAME: 182, 184
BASIC TYPE: JAD, JDE

PRINT:
07-2814

SHEET:
1 OF 1



ALL DIMENSIONS ARE IN INCHES AND MILLIMETERS

UNITS	A	B	D	E	2E	G	H	J	N	O	P ²
IN	8.88	6.75	4.50	3.75	7.50	.63	.41	1.56	2.50	9.38	9.13
MM	226	171	114	95	191	16	10	40	64	238	232

UNITS	T	U	V	W	AA	AB	AC	AF	BA	BS	ES	EV
IN	2.03	.8750	2.00	.25	3/4 NPT	8.06	5.75	2.13	2.75	2.75	1.38	.63
MM	52	22.225	51	6		205	146	54	70	70	35	16

UNITS	FC	FAH	FAJ	FAK	FBB	FBF	FES	FU	PE SQ	SE SQ
IN	17.50	2.25	5.875	4.500	.16	3/8-16	1.78	.8750	.188	.188
MM	445	57	149.23	114.30	4		45	22.225	4.78	4.78

FRAME	UNITS	2F
182	IN	4.50
	MM	114
184	IN	5.50
	MM	140

TOLERANCES	4.500 AK
FACE RUNOUT	.004 T.I.R.
PERMISSIBLE ECCENTRICITY OF MOUNTING RABBET	.004 T.I.R.
PERMISSIBLE SHAFT RUNOUT	.002 T.I.R.
TOLERANCE ON "AK" DIMENSION	-.003

1: ALL ROUGH CASTING DIMENSIONS MAY VARY BY .25" DUE TO CASTING AND/OR FABRICATION VARIATIONS.
2: LARGEST MOTOR WIDTH.
3: TOLERANCES SHOWN ARE IN INCHES ONLY.

4: STANDARD ASSEMBLY POSITION F-1 IS SHOWN F-2 IS PROVIDED WHEN SPECIFIED. CONDUIT OPENINGS MAY BE LOCATED IN STEPS OF 90° REGARDLESS OF LOCATION.
STANDARD AS SHOWN WITH CONDUIT OPENING DOWN.
5: ALL TAPPED HOLES ARE UNIFIED NATIONAL COARSE, RIGHT HAND THREAD.
6: TAP SIZE AND BOLT PENETRATION ALLOWANCE.

07-2814/A

Nidec Motor Corporation
St. Louis, Missouri

INFORMATION DISCLOSED ON THIS DOCUMENT IS CONSIDERED PROPRIETARY AND SHALL NOT BE REPRODUCED OR DISCLOSED WITHOUT WRITTEN CONSENT OF NIDEC MOTOR CORPORATION



ISSUED BY
D. MISAL
APPROVED BY
R. KING

IHP_DP_NMCA (MAR-2011) SOLIDEDGE