

EFFECTIVE:
25-AUG-11

HORIZONTAL MOTORS

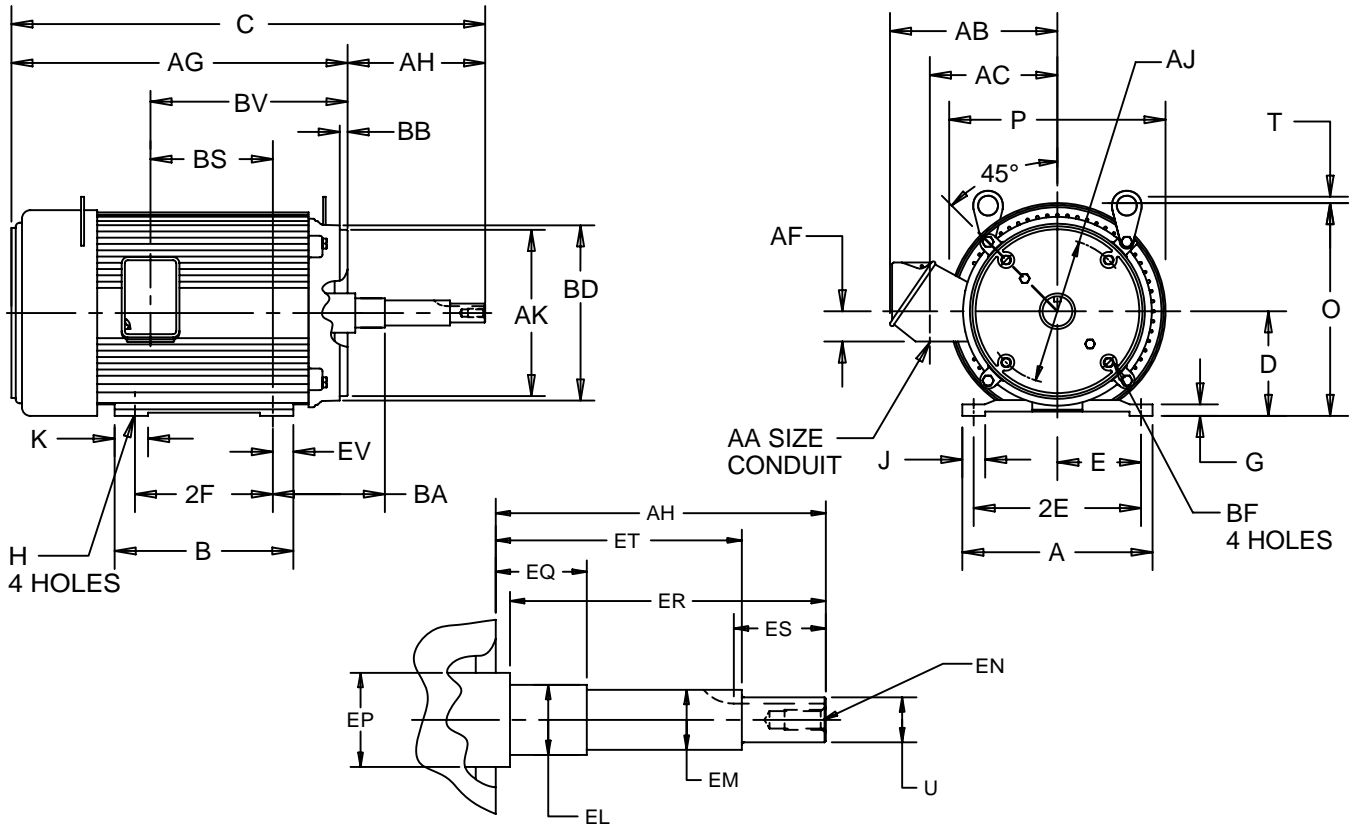
UNIMOUNT CLOSE-COUPLED PUMP

PRINT:
07-2818

SUPERSEDES:
29-APR-09

FRAME: 284JM - 286JM
BASIC TYPE: UT-4

SHEET:
1 OF 1



ALL DIMENSIONS ARE IN INCHES AND MILLIMETERS

| UNITS | A | C | D -.06 | E | 2E ±.03 | G | H +.05 | J | K | O | P ² | T | U -.0005 |
|-------|-------|-------|-----------|------|------------|-----|-----------|------|------|-------|----------------|---|-------------|
| IN | 12.88 | 29.13 | 7.00 | 5.50 | 11.00 | .70 | .53 | 1.88 | 2.63 | 13.69 | 13.38 | 0 | 1.2495 |
| MM | 327 | 740 | 178 | 140 | 279 | 18 | 13 | 48 | 67 | 348 | 340 | 0 | 31.737 |

| UNITS | AA | AB | AC | AF | AG | AH ±.031 | AJ | AK -.005 | BA | BB -.062 | BD MAX | BF ⁷ |
|-------|------|-------|------|------|-------|-------------|--------|-------------|------|-------------|-----------|-----------------|
| IN | 1.50 | 10.81 | 8.25 | 2.13 | 23.88 | 5.250 | 11.000 | 12.500 | 5.63 | .313 | 14.00 | 5/8-11 X .94 |
| MM | | 275 | 210 | 54 | 607 | 133.35 | 279.40 | 317.50 | 143 | 7.95 | 356 | |

| UNITS | BS | BV | EL -.002 | EM -.0005 | EN ⁷ | EP MIN | EQ ±.015 | ER MIN | ES MIN | ET ±.015 | EV | SQ KEY |
|-------|-------|-------|-------------|--------------|-----------------|-----------|-------------|-----------|-----------|-------------|------|-----------|
| IN | 10.63 | 15.63 | 1.750 | 1.3750 | 1/2-13 x 1.00 | 2.13 | .625 | 5.25 | 2.53 | 3.000 | 1.38 | .250 |
| MM | 270 | 397 | 44.45 | 34.925 | | 54 | 15.88 | 133 | 64 | 76.20 | 35 | 6.35 |

| FRAME | UNITS | B | 2F ±.03 |
|-------|-------|-------|------------|
| 284JM | IN | 12.25 | 9.50 |
| | MM | 311 | 241 |
| 286JM | IN | 13.75 | 11.00 |
| | MM | 349 | 279 |

| TOLERANCES | |
|---|-------------|
| FACE RUNOUT | .006 T.I.R. |
| PERMISSIBLE ECCENTRICITY OF MOUNTING RABBET | .006 T.I.R. |
| PERMISSIBLE SHAFT RUNOUT | .003 T.I.R. |

- 1: ALL ROUGH CASTING DIMENSIONS MAY VARY BY .25" DUE TO CASTING AND/OR FABRICATION VARIATIONS.
- 2: LARGEST MOTOR WIDTH.
- 3: FRAME REFERENCE: 16.250"/284/286

- 4: CONDUIT BOX MAY BE LOCATED ON EITHER SIDE OF MOTOR. CONDUIT OPENINGS MAY BE LOCATED IN STEPS OF 180 DEGREES REGARDLESS OF LOCATION. STANDARD AS SHOWN WITH CONDUIT OPENING DOWN.
- 5: TOLERANCES SHOWN ARE IN INCHES ONLY.
- 6: ALL TAPPED HOLES ARE UNIFIED NATIONAL COARSE, RIGHT HAND THREAD.
- 7: TAP SIZE AND BOLT PENETRATION ALLOWANCE.

07-2818/A

Nidec Motor Corporation
St. Louis, Missouri

INFORMATION DISCLOSED ON THIS DOCUMENT IS CONSIDERED PROPRIETARY AND SHALL NOT BE REPRODUCED OR DISCLOSED WITHOUT WRITTEN CONSENT OF NIDEC MOTOR CORPORATION



ISSUED BY
R. KING
APPROVED BY
J. O'BRIEN

IHP_DP_NMCA (MAR-2011) SOLIDEDGE