

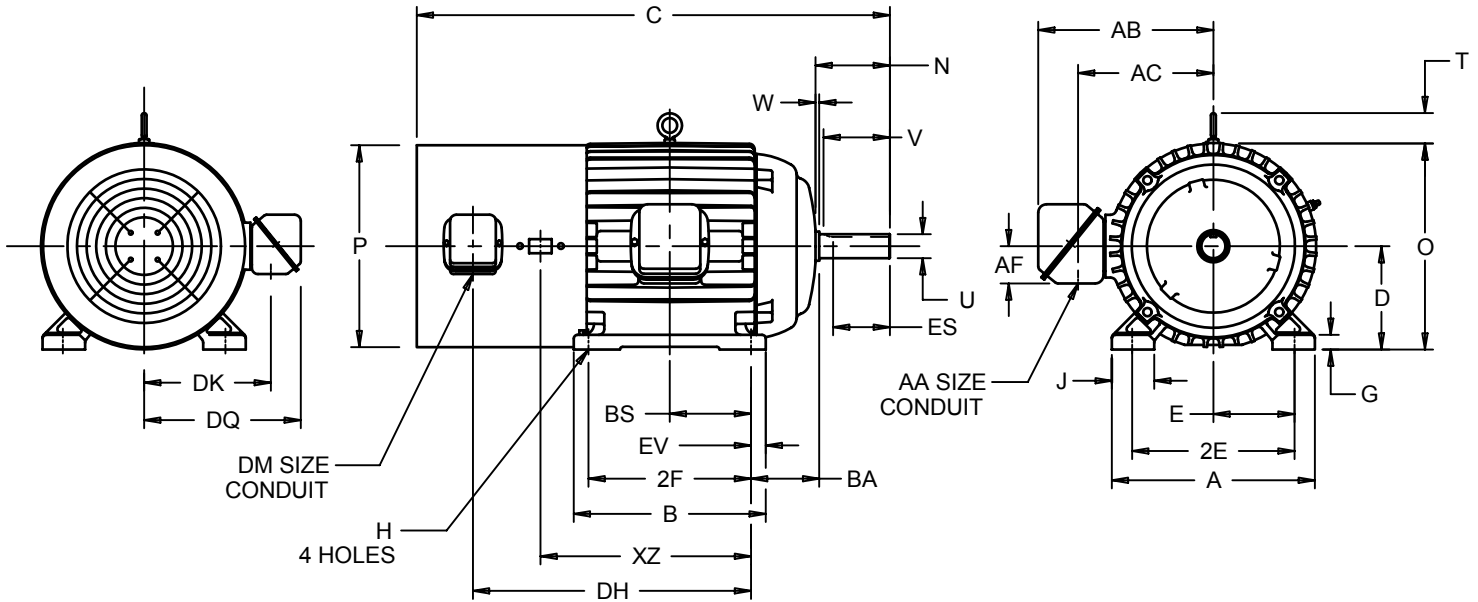
EFFECTIVE:
15-JUN-11

SUPERSEDES:
25-MAY-09

HORIZONTAL MOTORS
VECTOR CONTROL
FRAME: 254, 256T
BASIC TYPE: CTBI, CTBX-CONVERSION

PRINT:
07-2834

SHEET:
1 OF 1



ALL DIMENSIONS ARE IN INCHES AND MILLIMETERS

UNITS	A	B	C	D	E	2E	G	H	J	N
IN	12.13	12.00	29.00	6.25	5.00	10.00	.88	.53	2.25	4.38
MM	308	305	737	159	127	254	22	13	57	111

UNITS	O	P ²	T	U	V	W	AA	AB	AC	AF	BA
IN	12.91	12.94	2.03	1.625	3.75	.38	1.50	11.12	8.53	2.53	4.25
MM	328	329	52	41.28	95	10		282	217	64	108

UNITS	BS	DH	DK	DM	DQ	ES	EV	XZ	SQ	KEY
IN	5.00	18.38	7.75	.75 NPT	9.38	2.91	1.00	15.38	.38	
MM	127	467	197		238	74	25	391	10	

FRAME	UNITS	2F
254T	IN	8.25
	MM	210
256T	IN	10.00
	MM	254

1: ALL ROUGH CASTING DIMENSIONS MAY VARY BY .25" DUE TO CASTING AND/OR FABRICATION VARIATIONS.
2: LARGEST MOTOR WIDTH.
3: TOLERANCES SHOWN ARE IN INCHES ONLY.

4: STANDARD ASSEMBLY POSITION F-1 IS SHOWN F-2 IS PROVIDED WHEN SPECIFIED. CONDUIT OPENINGS MAY BE LOCATED IN STEPS OF 90° REGARDLESS OF LOCATION. STANDARD AS SHOWN WITH CONDUIT OPENING DOWN.

07-2834/A

Nidec Motor Corporation
St. Louis, Missouri

INFORMATION DISCLOSED ON THIS DOCUMENT IS CONSIDERED PROPRIETARY AND SHALL NOT BE REPRODUCED OR DISCLOSED WITHOUT WRITTEN CONSENT OF NIDEC MOTOR CORPORATION



ISSUED BY
D. MISAL
APPROVED BY
R. KING

IHP_DP_NMCA (MAR-2011) SOLIDEDGE