

EFFECTIVE:  
**14-JUN-11**

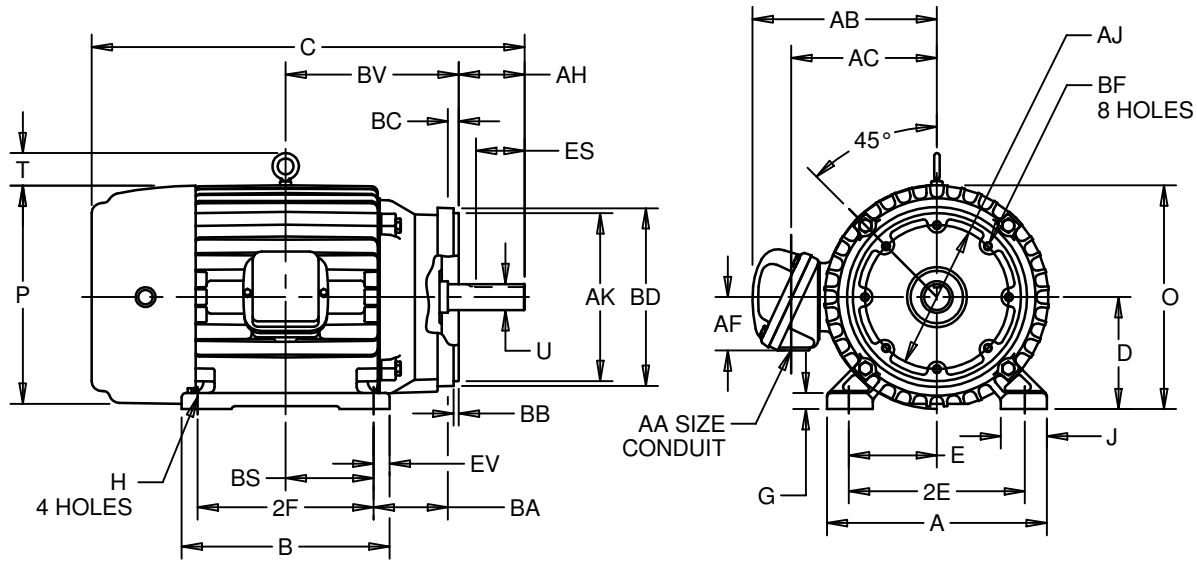
SUPERSEDES:  
**25-MAY-09**

# HORIZONTAL MOTORS WITH NEMA "C" BRACKET

FRAME: 254, 256TC  
BASIC TYPE: CE,TC

PRINT:  
**07-2839**

SHEET:  
**1 OF 1**



ALL DIMENSIONS ARE IN INCHES AND MILLIMETERS

UNITS	A	B	C	D	E	2E	G	H	J	O	P <sup>5</sup>
IN	12.25	12.00	26.50	6.25	5.00	10.00	.88	.53	2.25	12.94	13.38
MM	311	305	673	159	127	254	22	13	57	329	340

UNITS	T	U	AA	AB	AC	AF	AH	AJ	AK	BA
IN	2.03	1.625	1.50 NPT	11.56	8.56	2.63	3.75	7.25	8.50	4.75
MM	52	41.28		294	217	67	95	184	216	121

UNITS	BB	BC	BD MAX	BS	BF <sup>2</sup>	BV	ES MIN	EV	SQ KEY
IN	.25	.25	10.00	5.00	1/2-13 X .75	10.00	2.91	1.00	.375
MM	6	6	254	127		254	74	25	9.53

FRAME	UNITS	2F
254TC	IN	8.25
	MM	210
256TC	IN	10.00
	MM	254

- 1: ALL ROUGH DIMENSIONS MAY VARY BY .25" DUE TO CASTING AND/OR FABRICATION VARIATIONS.
- 2: TAP SIZE AND BOLT PENETRATION ALLOWANCE.
- 3: ALL TAPPED HOLES ARE UNIFIED NATIONAL COARSE, RIGHT HAND THREAD.
- 4: CONDUIT BOX MAY BE LOCATED ON EITHER SIDE OF MOTOR. CONDUIT OPENINGS MAY BE LOCATED IN STEPS OF 90° REGARDLESS OF LOCATION. STANDARD AS SHOWN WITH CONDUIT OPENING DOWN.
- 5: LARGEST MOTOR WIDTH.
- 6: TOLERANCES SHOWN ARE IN INCHES ONLY.

TOLERANCES	
FACE RUNOUT	.004 T.I.R.
PERMISSIBLE ECCENTRICITY OF MOUNTING RABBET	.004 T.I.R.
PERMISSIBLE SHAFT RUNOUT	.002 T.I.R.
FOR IEEE841 SHAFT RUNOUT	.001 T.I.R.

07-2839/A

**Nidec Motor Corporation**  
St. Louis, Missouri

INFORMATION DISCLOSED ON THIS DOCUMENT IS CONSIDERED PROPRIETARY AND SHALL NOT BE REPRODUCED OR DISCLOSED WITHOUT WRITTEN CONSENT OF NIDEC MOTOR CORPORATION



ISSUED BY  
**N. SHELAR**  
APPROVED BY  
**R. KING**

IHP\_DP\_NMCA (MAR-2011) SOLIDEDGE