

EFFECTIVE:  
**15-JUN-11**

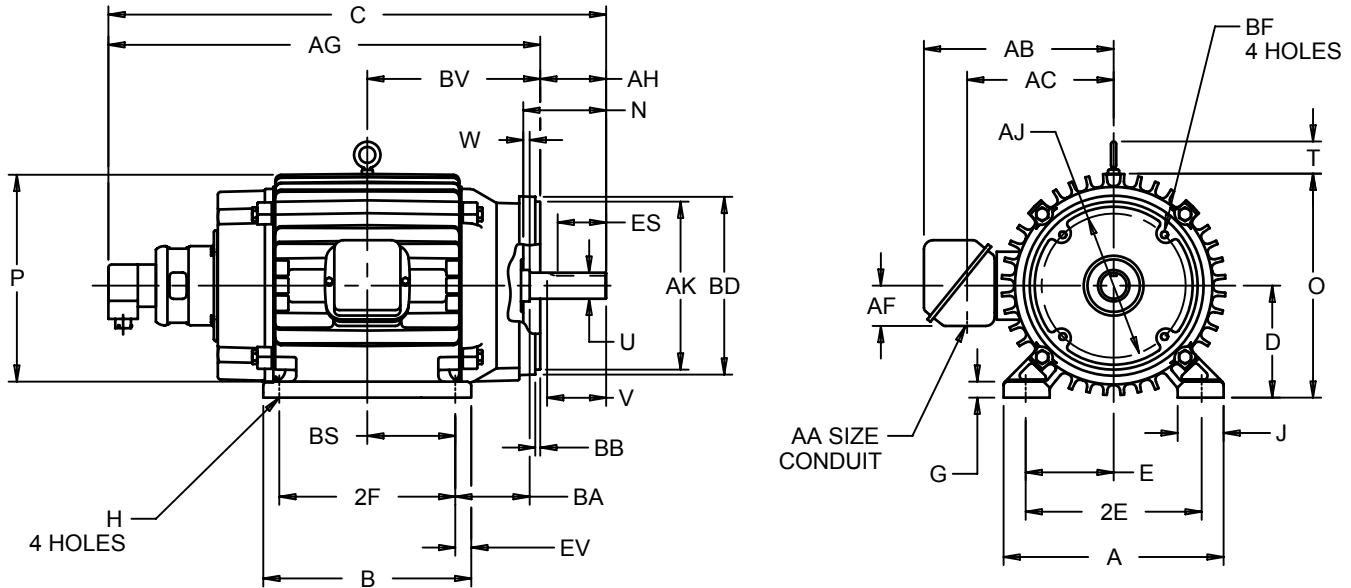
SUPERSEDES:  
**25-MAY-09**

# HORIZONTAL MOTORS

TENV - VERIDYNE  
FRAME: 254TC, 256TC  
BASIC TYPE: CTNX

PRINT:  
**07-2845**

SHEET:  
**1 OF 1**



ALL DIMENSIONS ARE IN INCHES AND MILLIMETERS

UNITS	A	B	C	D -.06	E	2E ±.03	G	H +.05	J	N	O
IN	12.25	12.00	27.84	6.25	5.00	10.00	.88	.53	2.25	4.41	12.94
MM	311	305	707	159	127	254	22	13	57	112	329

UNITS	P <sup>5</sup>	T	U -.001	V	W	AA	AB	AC	AF	AH	AJ
IN	12.74	2.03	1.625	3.75	.41	1.50	11.12	8.53	2.53	3.75	7.25
MM	324	52	41.28	95	10		282	217	64	95	184

UNITS	AK -.003	BA <sup>7</sup>	BB	BD MAX	BS	BF <sup>2</sup>	BV	ES MIN	EV	SQ KEY
IN	8.50	4.75	.25	10.00	5.00	1/2-13 X .75	10.00	2.91	1.00	.38
MM	216	121	6	254	127		254	74	25	10

FRAME	UNITS	2F ±.03
254TC	IN	8.25
	MM	210
256TC	IN	10.00
	MM	254

- 1: ALL ROUGH DIMENSIONS MAY VARY BY .25" DUE TO CASTING AND/OR FABRICATION VARIATIONS.
- 2: TAP SIZE AND BOLT PENETRATION ALLOWANCE.
- 3: ALL TAPPED HOLES ARE UNIFIED NATIONAL COARSE, RIGHT HAND THREAD.
- 4: CONDUIT BOX MAY BE LOCATED ON EITHER SIDE OF MOTOR. CONDUIT OPENINGS MAY BE LOCATED IN STEPS OF 90° REGARDLESS OF LOCATION. STANDARD AS SHOWN WITH CONDUIT OPENING DOWN.
- 5: LARGEST MOTOR WIDTH.
- 6: TOLERANCES SHOWN ARE IN INCHES ONLY.
- 7: NON-NEMA BA.
- 6: ENCODER CONNECTOR IS SHOWN OUT OF POSITION.

TOLERANCES	
FACE RUNOUT	.004 T.I.R.
PERMISSIBLE ECCENTRICITY OF MOUNTING RABBET	.004 T.I.R.
PERMISSIBLE SHAFT RUNOUT	.002 T.I.R.

07-2845/A

**Nidec Motor Corporation**  
St. Louis, Missouri

INFORMATION DISCLOSED ON THIS DOCUMENT IS CONSIDERED PROPRIETARY AND SHALL NOT BE REPRODUCED OR DISCLOSED WITHOUT WRITTEN CONSENT OF NIDEC MOTOR CORPORATION



ISSUED BY  
**D. MISAL**  
APPROVED BY  
**R. KING**

IHP\_DP\_NMCA (MAR-2011) SOLIDEDGE