

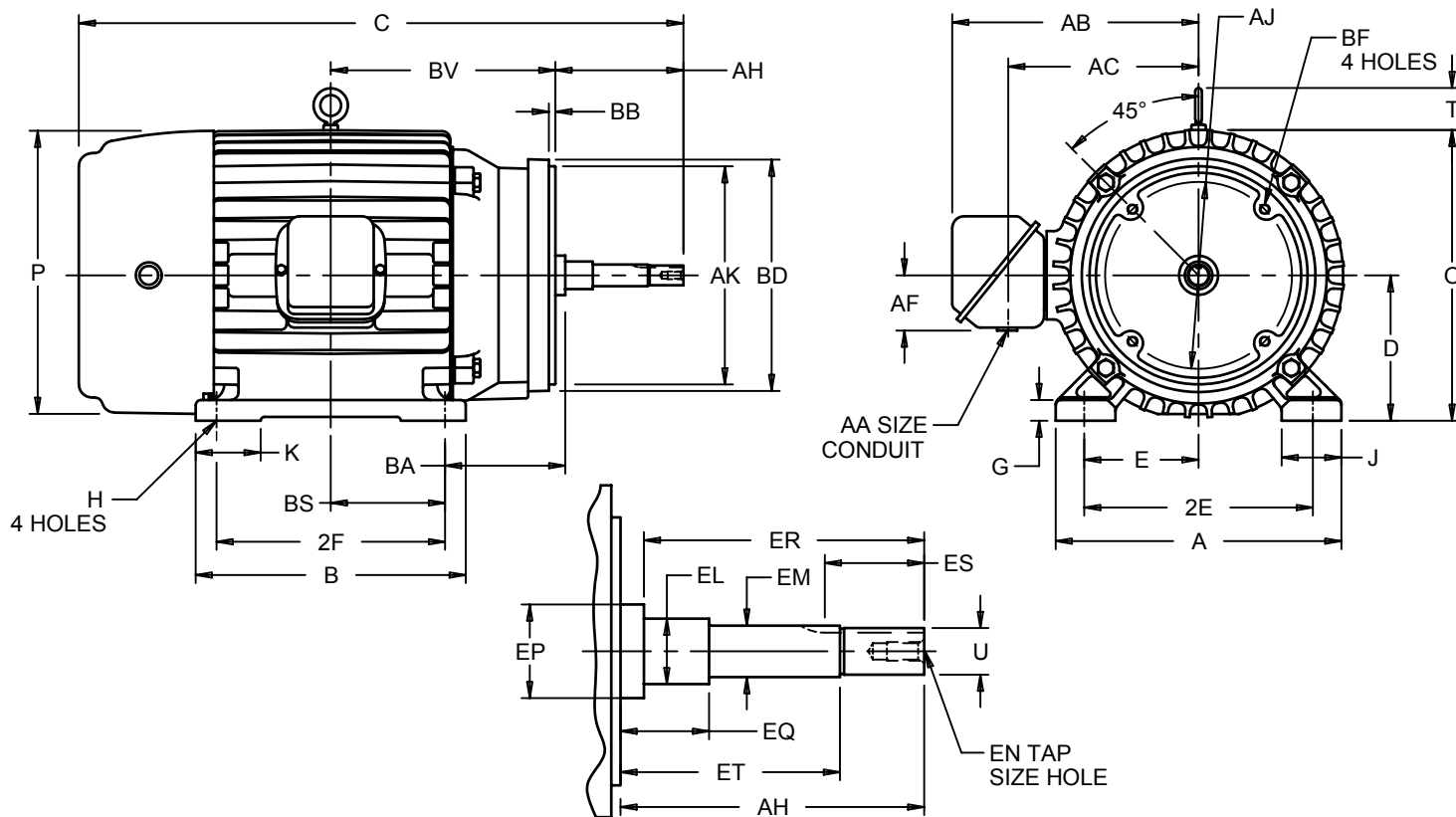
EFFECTIVE:  
**15-JUN-11**

SUPERSEDES:  
**26-MAY-09**

**HORIZONTAL MOTORS**  
**CLOSE COUPLED PUMP MOTORS**  
FRAME: 254, 256JP  
BASIC TYPE: L-1 (EXPLOSION PROOF)

PRINT:  
**07-2846**

SHEET:  
**1 OF 1**



ALL DIMENSIONS ARE IN INCHES AND MILLIMETERS

UNITS	A	B	C	D -.06	E	2E ±.03	G	H +.05	J	O	P <sup>2</sup>	T	U -.0005
IN	12.13	12.00	30.50	6.25	5.00	10.00	.88	.53	2.25	12.94	13.38	2.06	1.2500
MM	308	305	775	159	127	254	22	14	57	329	340	52	31.750

UNITS	AA	AB	AC	AF	AH ±.031	AJ	AK -.003	BA	BB MIN	BD MAX	BF
IN	1.50	11.07	8.22	3.13	8.13	7.25	8.50	4.75	.31	10.00	1/2-13 X .75
MM		281	209	80	207	184	216	121	8	254	

UNITS	BS	BV	EL -.002	EM -.0005	EN	EP MIN	EQ ±.020	ER MIN	ES MIN	ET ±.020	EV	SQ KEY
IN	5.00	10.00	1.75	1.38	1/2-13 X 1	1.75	2.38	8.13	2.53	5.88	1.00	.250
MM	127	254	45	35		45	60	207	64	149	25	6.00

FRAME	UNITS	2F ±.03
254JP	IN	8.25
	MM	210
256JP	IN	10.00
	MM	254

TOLERANCES	
FACE RUNOUT	.004 T.I.R.
PERMISSIBLE ECCENTRICITY OF MOUNTING RABBET	.004 T.I.R.
PERMISSIBLE SHAFT RUNOUT	.002 T.I.R.

1: ALL ROUGH CASTING DIMENSIONS MAY VARY BY .25" DUE TO CASTING AND/OR FABRICATION VARIATIONS.  
2: LARGEST MOTOR WIDTH.  
3: TOLERANCES SHOWN ARE IN INCHES ONLY.

4: STANDARD ASSEMBLY POSITION F-1 IS SHOWN F-2 IS PROVIDED WHEN SPECIFIED. CONDUIT OPENINGS MAY BE LOCATED IN STEPS OF 90° REGARDLESS OF LOCATION. STANDARD AS SHOWN WITH CONDUIT OPENING DOWN.  
5: ALL TAPPED HOLES ARE UNIFIED NATIONAL COARSE, RIGHT HAND THREAD.  
6: TAP SIZE AND BOLT PENETRATION ALLOWANCE.

07-2846/A

**Nidec Motor Corporation**  
St. Louis, Missouri

INFORMATION DISCLOSED ON THIS DOCUMENT IS CONSIDERED PROPRIETARY AND SHALL NOT BE REPRODUCED OR DISCLOSED WITHOUT WRITTEN CONSENT OF NIDEC MOTOR CORPORATION



ISSUED BY  
**D. MISAL**  
APPROVED BY  
**R. KING**

IHP\_DP\_NMCA (MAR-2011) SOLIDEDGE