

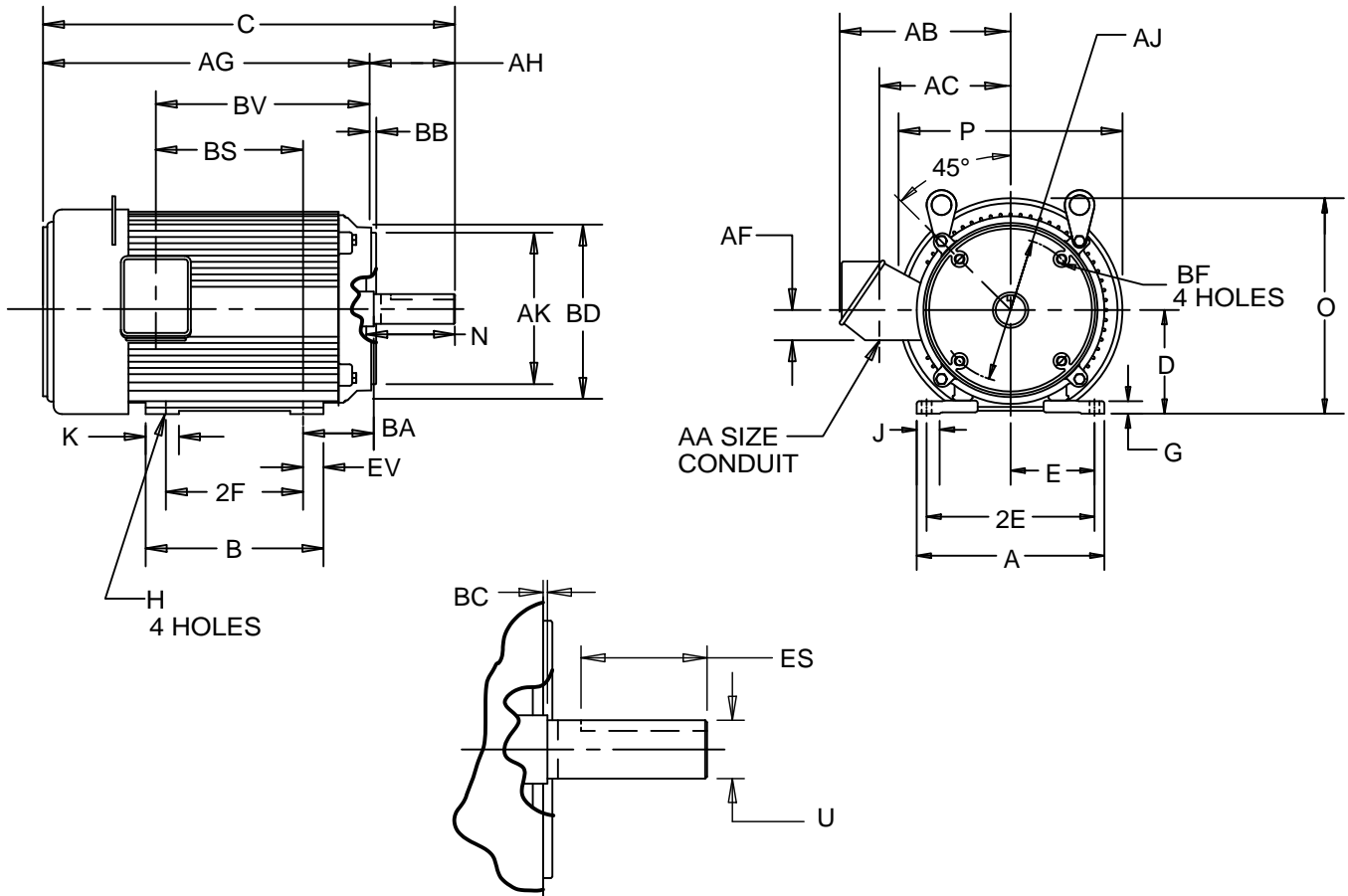
EFFECTIVE:
30-JUL-13

SUPERSEDES:
13-JUL-09

DIMENSION PRINT
UNIMOUNT WITH "C" BRACKET
FRAME: 284-286 TC
BASIC TYPE: UT

PRINT:
07-2874

SHEET:
1 OF 1



ALL DIMENSIONS ARE IN INCHES AND MILLIMETERS

UNITS	A	D -.06	E	2E ±.03	G	H +.05	J	K	N	O	P ²	U -.001	AA	AB
IN	12.88	7.00	5.50	11.00	.75	.53	1.88	2.63	4.75	13.69	13.38	1.875	1.50	10.81
MM	327	178	140	279	19	13	48	67	121	348	340	47.63		275

UNITS	AC	AF	AH	AJ	AK -.003	BA	BB MIN	BC	BD MAX	BF ⁷	ES MIN	EV	SQ KEY
IN	8.25	2.13	4.38	9.000	10.500	4.75	.25	.25	11.25	1/2-13 X .75	3.28	1.38	.500
MM	210	54	111	228.60	266.70	121	6	6	286		83	35	12.70

FRAME	UNITS	B	C	2F ±.03	AG	BS	BV
284TC	IN	12.25	26.75	9.50	22.38	9.13	14.13
	MM	311	679	241	568	232	359
286TC	IN	13.75	28.25	11.00	23.88	10.63	15.63
	MM	349	718	279	606	270	397

TOLERANCES	
FACE RUNOUT	.004 T.I.R.
PERMISSIBLE ECCENTRICITY OF MOUNTING RABBET	.004 T.I.R.
PERMISSIBLE SHAFT RUNOUT	.002 T.I.R.

- 1: ALL ROUGH CASTING DIMENSIONS MAY VARY BY .25" DUE TO CASTING AND/OR FABRICATION VARIATIONS.
- 2: LARGEST MOTOR WIDTH.
- 3: FRAME REFERENCE: 14.750"/284//16.250"/286

- 4: CONDUIT BOX MAY BE LOCATED ON EITHER SIDE OF MOTOR. CONDUIT OPENINGS MAY BE LOCATED IN STEPS OF 180 DEGREES REGARDLESS OF LOCATION. STANDARD AS SHOWN WITH CONDUIT OPENING DOWN.
- 5: TOLERANCES SHOWN ARE IN INCHES ONLY.
- 6: ALL TAPPED HOLES ARE UNIFIED NATIONAL COARSE, RIGHT HAND THREAD.
- 7: TAP SIZE AND BOLT PENETRATION ALLOWANCE.

07-2874/A

Nidec Motor Corporation
St. Louis, Missouri

INFORMATION DISCLOSED ON THIS DOCUMENT IS CONSIDERED PROPRIETARY AND SHALL NOT BE REPRODUCED OR DISCLOSED WITHOUT WRITTEN CONSENT OF NIDEC MOTOR CORPORATION



ISSUED BY
R. KING
APPROVED BY
J. O'BRIEN

IHP_DP_NMCA (MAR-2011) SOLIDEDGE