

EFFECTIVE:  
05-JUN-12

SUPERSEDES:  
17-JUN-11

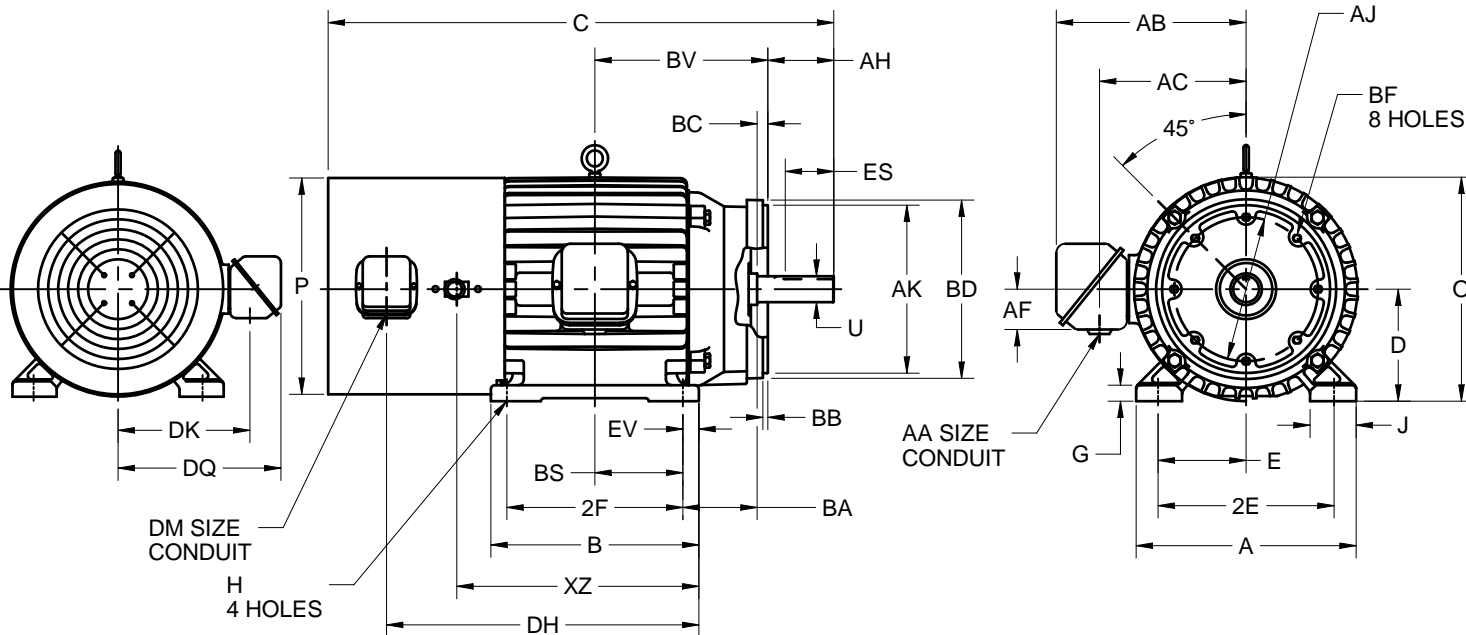
# HORIZONTAL MOTORS

## VARIDYNE

FRAME: 213, 215TC  
BASIC TYPE: CTBX, CTBI-CONVERSION

PRINT:  
07-2890

SHEET:  
1 OF 1



ALL DIMENSIONS ARE IN INCHES AND MILLIMETERS

UNITS	A	B	C	D -.06	E	2E ±.03	G	H +.05	J	O	P <sup>5</sup>	T
IN	10.50	8.50	23.75	5.25	4.25	8.50	.50	.41	1.75	10.81	10.94	2.03
MM	267	216	603	133	108	216	13	10	44	275	278	52

UNITS	U -.0005	AA	AB	AC	AF	AH	AJ	AK -.003	BA	BB	BC	BD MAX
IN	1.3750	1.00	8.88	7.06	2.00	3.12	7.250	8.500	4.25	.25	.25	9.00
MM	34.925		226	179	51	79	184.15	216.00	108	6	6	229

UNITS	BF <sup>2</sup>	BS	BV	DH	DK	DM	DQ	ES MIN	EV	XZ	SQ KEY
IN	1/2-13 X .75	3.50	8.00	14.50	6.75	.75 NPT	8.31	2.41	.75	11.50	.313
MM		89	203	368	171		211	61	19	292	7.95

FRAME	UNITS	2F ±.03
213TC	IN	5.50
	MM	140
215TC	IN	7.00
	MM	178

TOLERANCES	
FACE RUNOUT	.004 T.I.R.
PERMISSIBLE ECCENTRICITY OF MOUNTING RABBET	.004 T.I.R.
PERMISSIBLE SHAFT RUNOUT	.002 T.I.R.

1. ALL ROUGH DIMENSIONS MAY VARY BY .25" DUE TO CASTING AND/OR FABRICATION VARIATIONS.
2. TAP SIZE AND BOLT PENETRATION ALLOWANCE.
3. ALL TAPPED HOLES ARE UNIFIED NATIONAL COARSE, RIGHT HAND THREAD.
4. CONDUIT BOX MAY BE LOCATED ON EITHER SIDE OF MOTOR. CONDUIT OPENINGS MAY BE LOCATED IN STEPS OF 90° REGARDLESS OF LOCATION. STANDARD AS SHOWN WITH CONDUIT OPENING DOWN.
5. LARGEST MOTOR WIDTH.
6. TOLERANCES SHOWN ARE IN INCHES ONLY.

07-2890/B

**Nidec Motor Corporation**  
St. Louis, Missouri

INFORMATION DISCLOSED ON THIS DOCUMENT IS CONSIDERED PROPRIETARY AND SHALL NOT BE REPRODUCED OR DISCLOSED WITHOUT WRITTEN CONSENT OF NIDEC MOTOR CORPORATION



ISSUED BY  
**O. GALLEGOS**  
APPROVED BY  
**F. LARA**

IHP\_DP\_NMCA (MAR-2011) SOLIDEDGE