

EFFECTIVE:
09-DEC-10

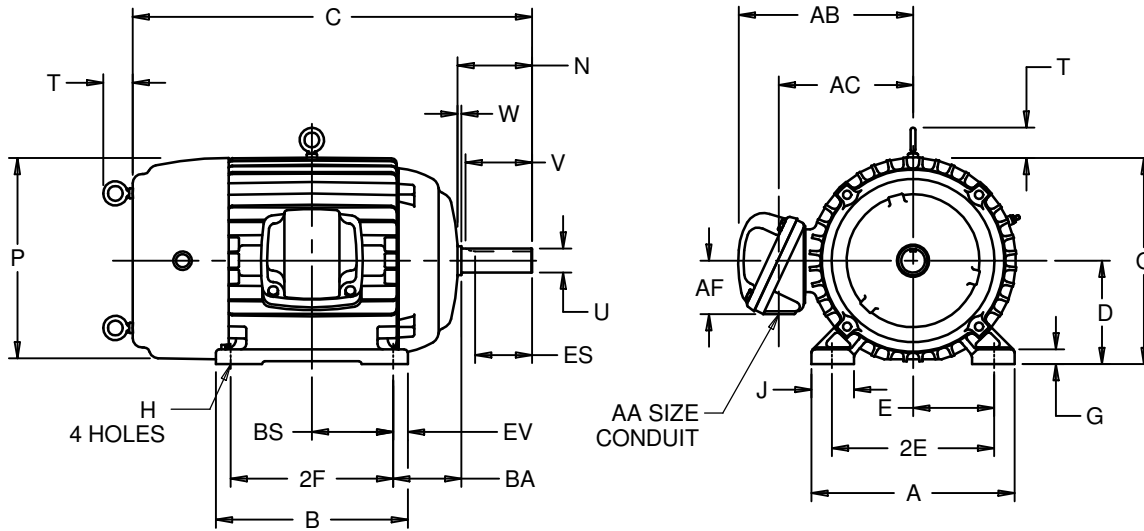
HORIZONTAL MOTORS

PRINT:
07-2894-02

SUPERSEDES:
NEW

HLL & VLL
FRAME: 213, 215T
BASIC TYPE: TC, CE

SHEET:
1 OF 1



ALL DIMENSIONS ARE IN INCHES AND MILLIMETERS

UNITS	A	B	C	D -.06	E	2E ±.03	G	H +.05	J	N
IN	10.38	8.50	20.00	5.25	4.25	8.50	.75	.41	1.75	3.75
MM	264	216	508	133	108	216	19	10	44	95

UNITS	O	P ²	T	U -.0005	V MIN	W	AA	AB	AC	AF
IN	10.75	11.00	2.03	1.3750	3.13	.38	1.00 NPT	9.82	7.26	2.00
MM	273	279	52	34.925	80	10		249	184	51

UNITS	BA	BS	ES MIN	EV	SQ KEY
IN	3.50	3.50	2.41	.75	.313
MM	89	89	61	19	7.95

FRAME	UNITS	2F ±.03
213T	IN	5.50
	MM	140
215T	IN	7.00
	MM	178

1: ALL ROUGH CASTING DIMENSIONS MAY VARY BY .25" DUE TO CASTING AND/OR FABRICATION VARIATIONS.
2: LARGEST MOTOR WIDTH.
3: TOLERANCES SHOWN ARE IN INCHES ONLY.

4: STANDARD ASSEMBLY POSITION F-1 IS SHOWN F-2 IS PROVIDED WHEN SPECIFIED. CONDUIT OPENINGS MAY BE LOCATED IN STEPS OF 90 DEGREES REGARDLESS OF LOCATION. STANDARD AS SHOWN WITH CONDUIT OPENING DOWN.



ISSUED BY
V. PAWAR
APPROVED BY
E. LIZANA