

EFFECTIVE:
12-JUL-12

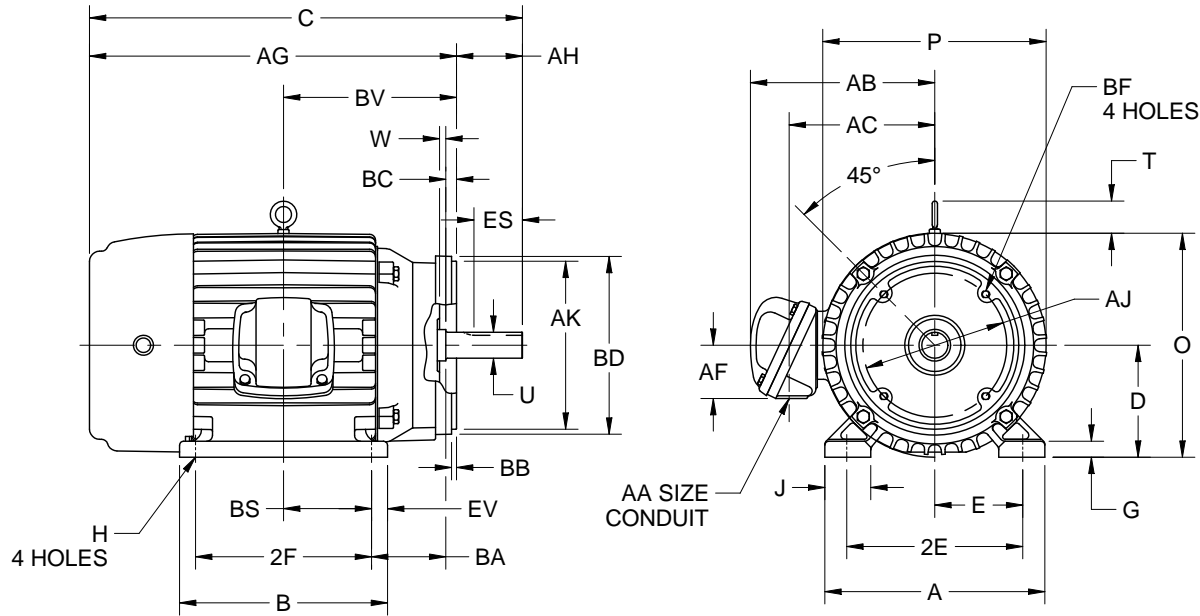
SUPERSEDES:
02-FEB-12

HORIZONTAL MOTORS WITH NEMA "C" BRACKET

FRAME: 213, 215TC
BASIC TYPE: CE, TC

PRINT:
07-2895

SHEET:
1 OF 1



ALL DIMENSIONS ARE IN INCHES AND MILLIMETERS

UNITS	A	B	C	D -.06	E	2E ±.03	G	H +.05	J	O	P ⁴	T
IN	10.38	8.50	20.75	5.25	4.25	8.50	.75	.41	1.75	10.75	11.00	2.03
MM	264	216	527	133	108	216	19	10	44	273	279	52

UNITS	U -.0005	W	AA	AB	AC	AF	AG	AH	AJ	AK -.003	BA	BB MIN
IN	1.3750	.50	1 NPT	9.82	7.26	2.00	17.63	3.125	7.250	8.500	4.25	.25
MM	34.925	13		249	184	51	448	79.38	184.15	215.90	108	6

UNITS	BC	BD MAX	BF ²	BS	BV	ES MIN	EV	SQ KEY
IN	.25	9.00	1/2-13 X .75	3.50	8.00	2.41	.75	.313
MM	6	229		89	203	61	19	7.95

FRAME	UNITS	2F ±.03
213TC	IN	5.50
	MM	140
215TC	IN	7.00
	MM	178

TOLERANCES	
FACE RUNOUT	.004 T.I.R.
PERMISSIBLE ECCENTRICITY OF MOUNTING RABBET	.004 T.I.R.
PERMISSIBLE SHAFT RUNOUT	.002 T.I.R.
FOR SPECIAL SHAFT RUNOUT	.001 T.I.R.

1. DIMENSIONS MAY VARY BY .25" DUE TO CASTING AND/OR FABRICATION VARIATIONS.
2. TAP SIZE AND BOLT PENETRATION ALLOWANCE.
3. ALL TAPPED HOLES ARE UNIFIED NATIONAL COARSE, RIGHT HAND THREAD.
4. LARGEST MOTOR WIDTH.

5. CONDUIT BOX MAY BE LOCATED ON EITHER SIDE OF MOTOR. CONDUIT OPENINGS MAY BE LOCATED IN STEPS OF 90 DEGREES REGARDLESS OF LOCATION. STANDARD AS SHOWN WITH CONDUIT OPENING DOWN.
6. TOLERANCES SHOWN ARE IN INCHES ONLY

07-2895/C

Nidec Motor Corporation
St. Louis, Missouri

INFORMATION DISCLOSED ON THIS DOCUMENT IS CONSIDERED PROPRIETARY AND SHALL NOT BE REPRODUCED OR DISCLOSED WITHOUT WRITTEN CONSENT OF NIDEC MOTOR CORPORATION



ISSUED BY
M. FLORES
APPROVED BY
D. PEREZ

IHP_DP_NMCA (MAR-2011) SOLIDEDGE