

EFFECTIVE:
27-JUN-11

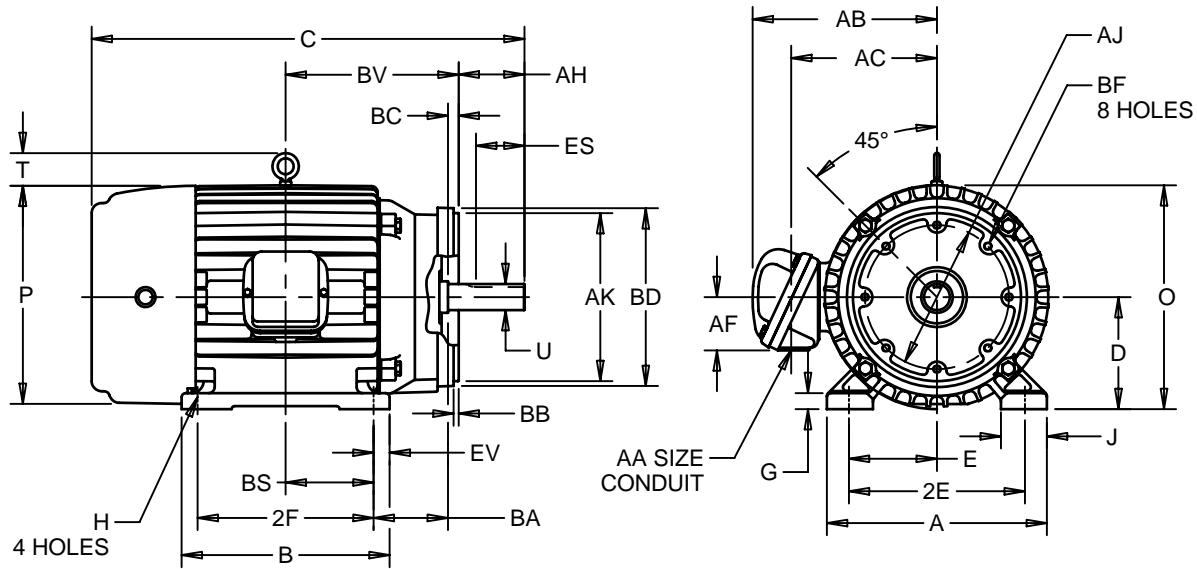
SUPERSEDES:
03-AUG-09

HORIZONTAL MOTORS WITH NEMA "C" BRACKET

FRAME: 213, 215TC
BASIC TYPE: CE, TC

PRINT:
07-2899

SHEET:
1 OF 1



ALL DIMENSIONS ARE IN INCHES AND MILLIMETERS

UNITS	A	B	C	D -.06	E	2E ±.03	G	H +.05	J	O
IN	10.50	8.50	20.75	5.25	4.25	8.50	.50	.41	1.75	10.94
MM	267	216	527	133	108	216	13	10	44	278

UNITS	P ⁵	T	U -.0005	AA	AB	AC	AF	AH	AJ	AK -.003
IN	11.19	2.03	1.3750	1.00 NPT	8.94	6.81	2.00	3.13	7.250	8.500
MM	284	52	34.925		227	173	51	80	184.15	215.90

UNITS	BA	BB	BC	BD MAX	BF ²	BS	BV	ES MIN	EV	SQ KEY
IN	4.25	.25	.25	9.00	1/2-13 X .75	3.50	8.00	2.41	.75	.313
MM	108	6	6	229		89	203	61	19	7.95

FRAME	UNITS	2F ±.03
213TC	IN	5.50
	MM	140
215TC	IN	7.00
	MM	178

- 1: ALL ROUGH DIMENSIONS MAY VARY BY .25" DUE TO CASTING AND/OR FABRICATION VARIATIONS.
- 2: TAP SIZE AND BOLT PENETRATION ALLOWANCE.
- 3: ALL TAPPED HOLES ARE UNIFIED NATIONAL COARSE, RIGHT HAND THREAD.
- 4: CONDUIT BOX MAY BE LOCATED ON EITHER SIDE OF MOTOR. CONDUIT OPENINGS MAY BE LOCATED IN STEPS OF 90° REGARDLESS OF LOCATION. STANDARD AS SHOWN WITH CONDUIT OPENING DOWN.
- 5: LARGEST MOTOR WIDTH.
- 6: TOLERANCES SHOWN ARE IN INCHES ONLY.

TOLERANCES	
FACE RUNOUT	.004 T.I.R.
PERMISSIBLE ECCENTRICITY OF MOUNTING RABBET	.004 T.I.R.
PERMISSIBLE SHAFT RUNOUT	.002 T.I.R.
FOR IEEE841 SHAFT RUNOUT	.001 T.I.R.

07-2899/A

Nidec Motor Corporation
St. Louis, Missouri

INFORMATION DISCLOSED ON THIS DOCUMENT IS CONSIDERED PROPRIETARY AND SHALL NOT BE REPRODUCED OR DISCLOSED WITHOUT WRITTEN CONSENT OF NIDEC MOTOR CORPORATION



ISSUED BY
A. HINGANKAR
APPROVED BY
R. KING

IHP_DP_NMCA (MAR-2011) SOLIDEDGE